

# LDCF/SCCF ANNUAL EVALUATION REPORT 2026



# AER 2026 SCOPE



**PERFORMANCE OF LDCF/SCCF PROJECTS**



**EVIDENCE FROM RECENT IEO EVALUATIONS**

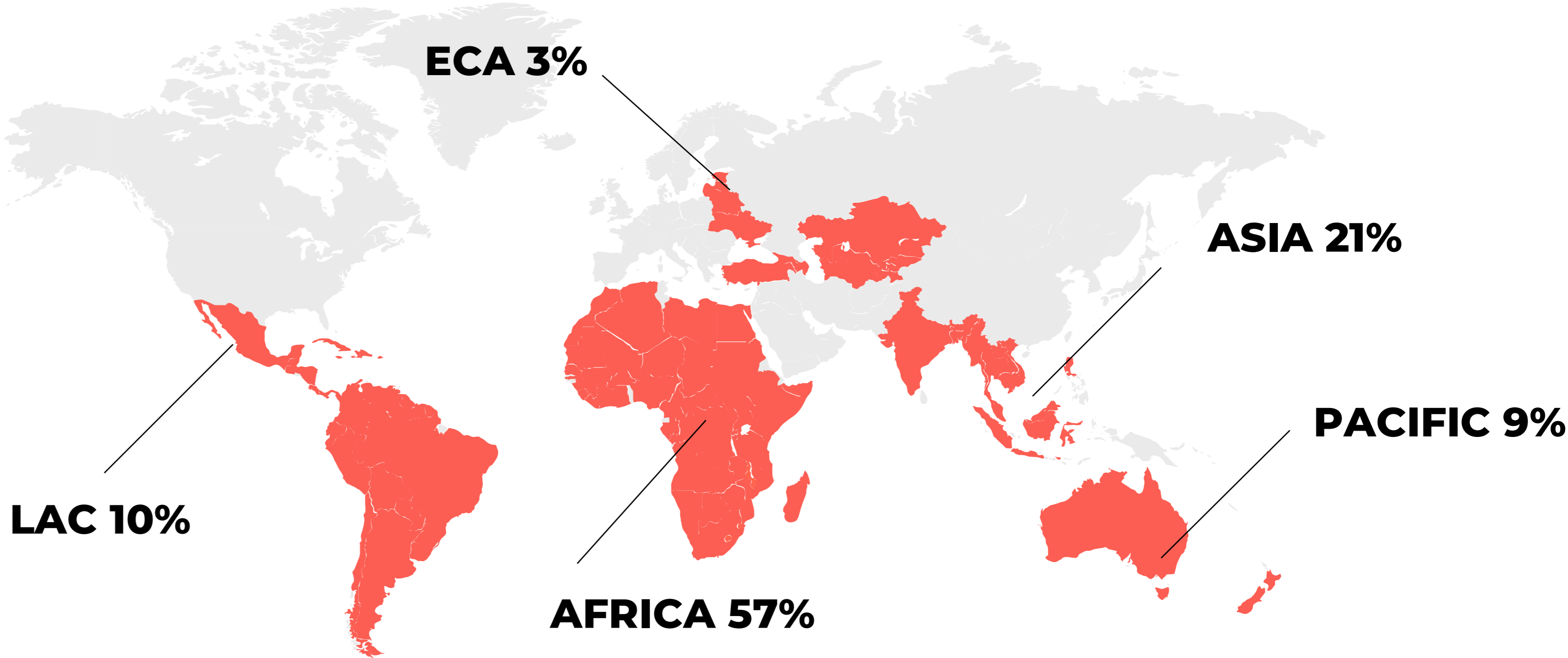
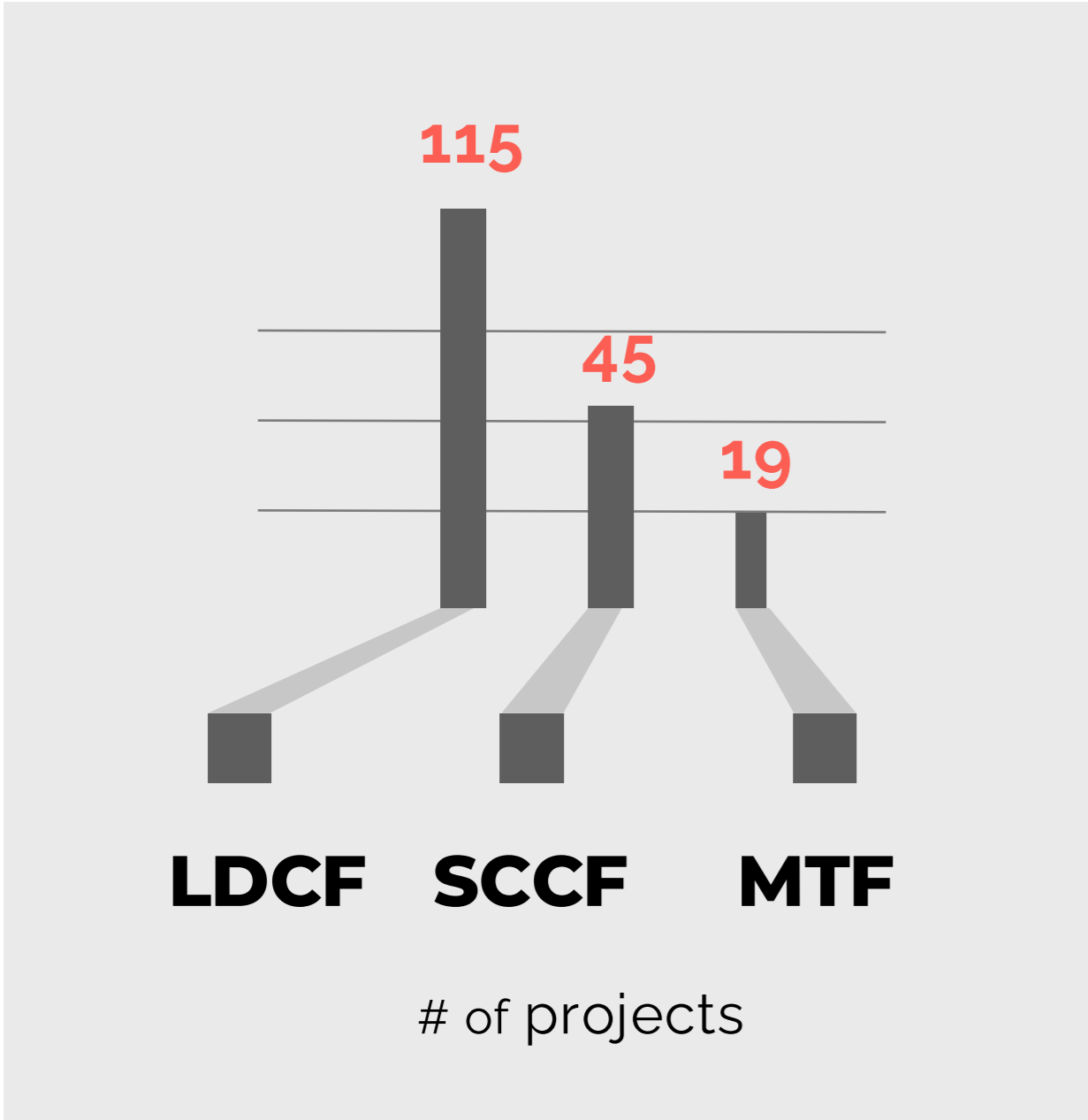


**ALIGNMENT WITH GEF-9 PROGRAMMING**

# OPS8 LDCF/SCCF EVIDENCE BASE

**103**  
countries

**\$882M**  
LDCF/SCCF grants



180 completed projects. One portfolio story.



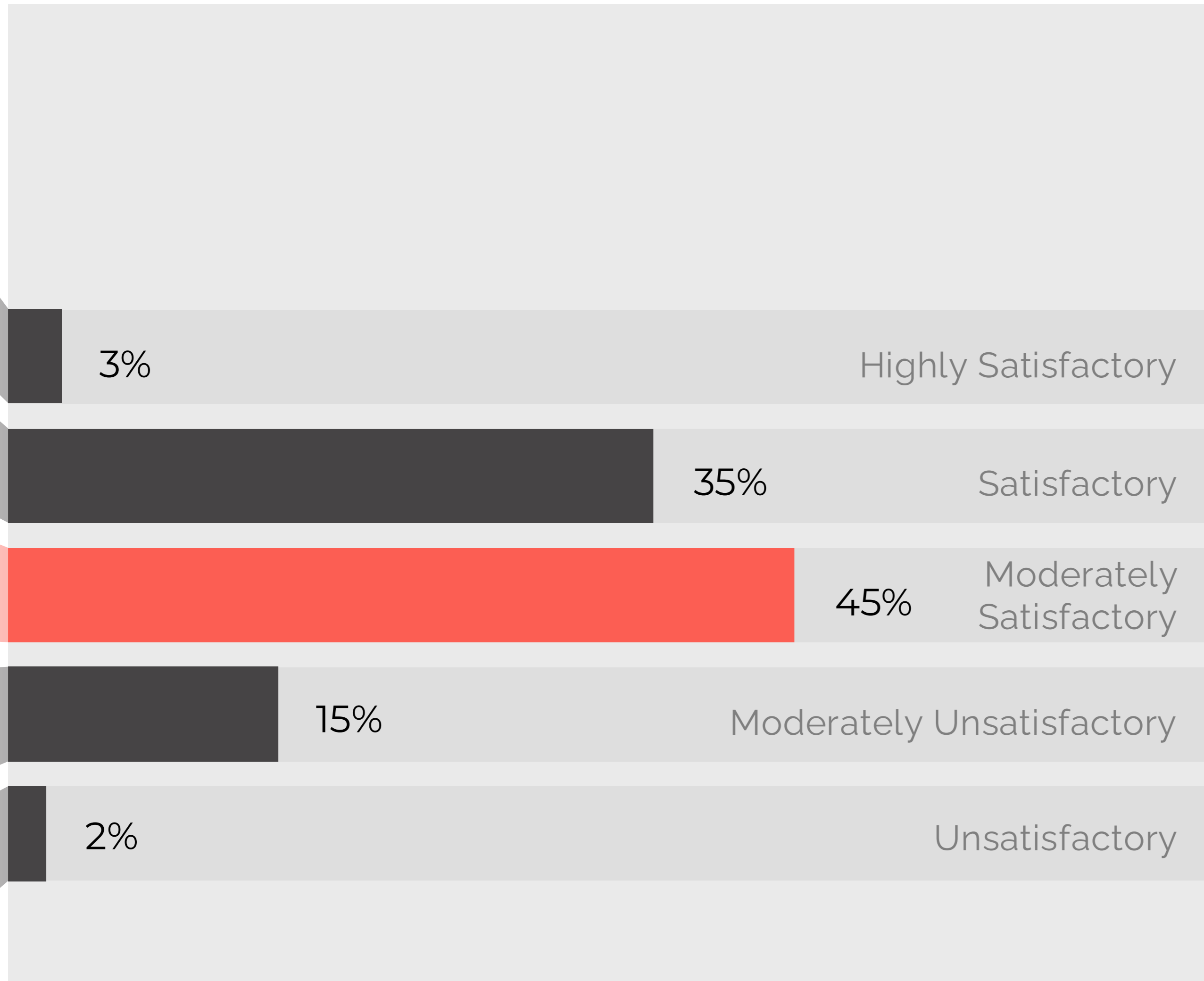
# ADAPTATION WORKS

83%

Satisfactory Outcomes

4.23

Mean Rating  
(Scale from 1-6)





HIGHLY SATISFACTORY

# BHUTAN

Forest under sustainable, climate-resilient management



**237,720 ha**



Irrigation infrastructure

**58 km**

---

## WHAT WORKED

Gov't co-financing 3x grant value

Payment for Ecosystem Services established

Revised national biodiversity policies

Adaptation mainstreamed in 12 districts

---

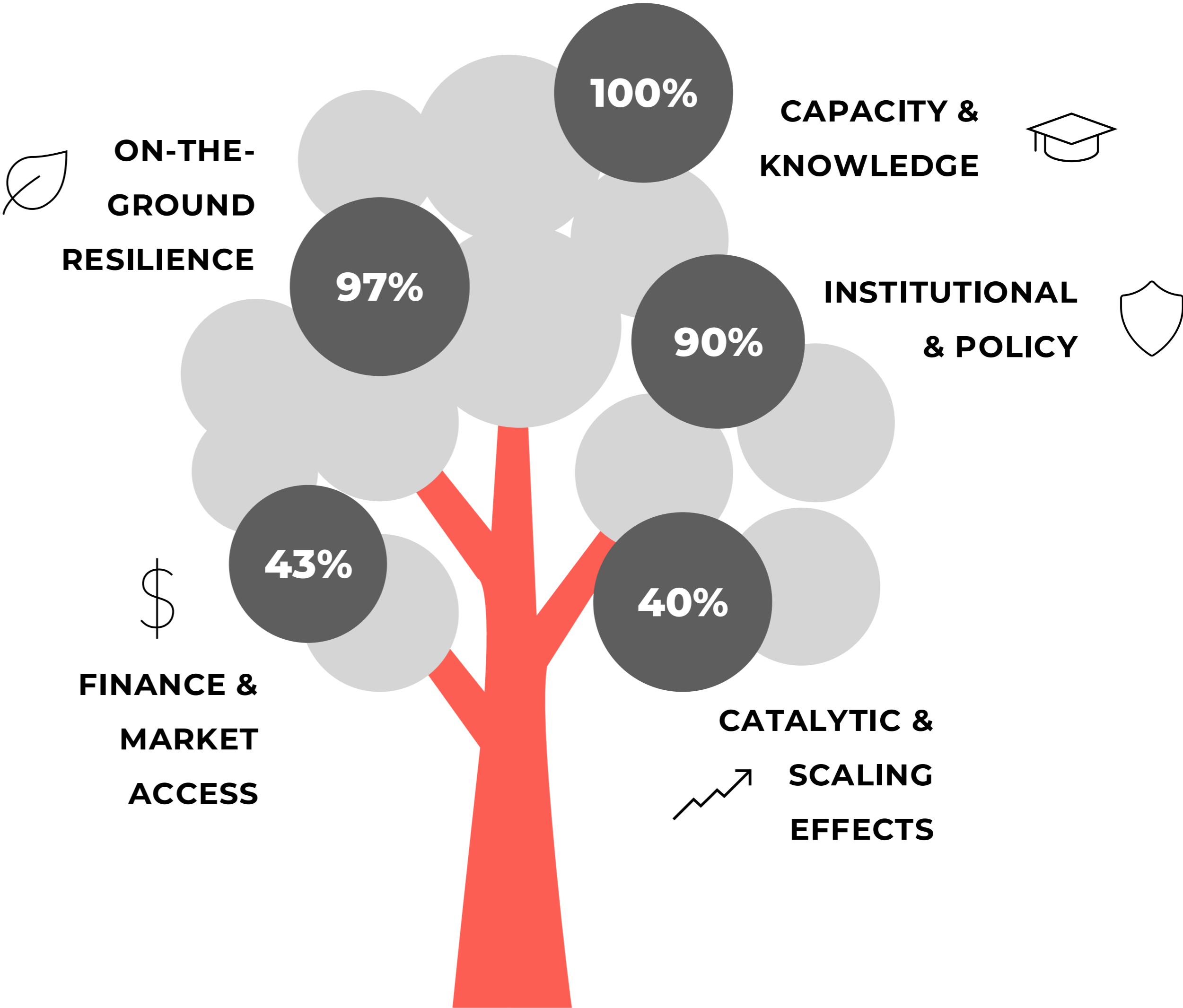
# AER 2026 ADAPTATION RESULTS TYPOLOGY



Great at building capacity & on-the-ground interventions



In the process of "hand-off" to markets and private sector



POTENTIALLY TRANSFORMATIONAL

# CHAD



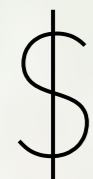
Capacity & knowledge



On-the-ground resilience



Institutional & policy



Finance & market access



Catalytic / scaling



PINAMAC  
RESILIENT LANDSCAPES AND  
LIVELIHOODS IN THE SAHEL

DELIVERY IS STRONG, DURABILITY IS NOT

# THE “SUSTAINABILITY WALL”

39%

Sustainability at risk

22-point gap

Outcomes vs Sustainability

## CASES WHERE SUSTAINABILITY BROKE DOWN

### Senegal

Ferlo-Saloum  
GEF ID 5867,  
UNDP

0

Units non-  
operational

Market access  
failure

### DR Congo

MettelSat project  
GEF ID 5451, WB

\$0

govt. funding  
vs. Committed

Zero financial  
commitment

### Lebanon

Smart adaptation  
forest landscapes  
GEF ID 5125, FAO

-90%

Lebanese  
pound collapse

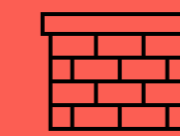
Economic  
collapse



SUSTAINABILITY UNLIKELY

# LIBERIA

Coastal revetment protecting  
New Kru Town



**1,125 m**

Direct beneficiaries + 928  
school students



**8,000**

---

## WHAT THREATENS SUSTAINABILITY

Reversed decades of coastal erosion;  
maintenance funding lacking

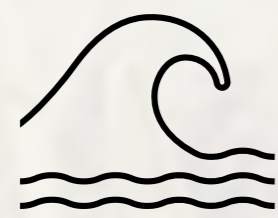
Without intervention, erosion will  
degrade the investment

---





# CONCLUSIONS



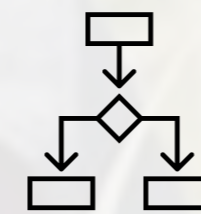
## DELIVERS

on its core mandate, but sustainability critical



## DESIGN

strong on delivery logic, but underestimates risk/complexity



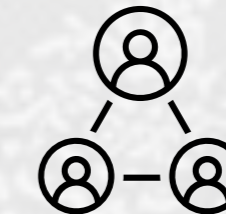
## STRUCTURAL

operational constraints are systemic, not exceptional



## RESULTS

concentrated at project level, with limited system-level reach



## INCLUSION

Is a growing strength, but depth is inconsistent

# RECOMMENDATIONS



**STRENGTHEN  
SUSTAINABILITY  
AND SCALING AT  
THE PROJECT  
DESIGN AND  
REVIEW STAGES**

1



2

**STRENGTHEN  
QUALITY-AT-ENTRY  
TO BETTER  
ALIGN PROJECT  
DESIGN WITH  
REALITIES  
IN LDACS  
AND FCS  
SETTINGS**



**STRENGTHEN M&E SYSTEMS  
TO IMPROVE OUTCOMES  
AND LEARNING**



# LDCF/SCCF WORK PROGRAM AND BUDGET



# IEO FY27 WORK PROGRAM LDCF/SCCF

## 01

LDCF/SCCF  
Program  
Evaluation



## 02

Annual  
Evaluation  
Report 2027



## 03

Knowledge  
management



# IEO FY27 BUDGET FOR LDCF/SCCF

LDCF + SCCF

## PROGRAM COSTS

LDCF

SCCF

TOTAL

Fixed costs

\$123,128

\$82,113

\$205,241

Variable costs

Includes WB hosting fee

\$29,029

\$49,492

\$78,521

**Total**

\$152,157

\$131,605

**\$283,762**



40<sup>TH</sup> COUNCIL

# RECOMMENDED COUNCIL DECISION



Total

**\$283,762**

The Council, having reviewed document GEF/LDCF.SCCF.40/E/02, "FY27 Program and Budget for the Independent Evaluation Office of the GEF under LDCF and SCCF," approves the annual budget of \$283,762 to carry out the work program for fiscal year 2027. It is within the approved four-year budget.

The approved FY27 budget is being distributed as follows:

1. \$152,157 from the Least Developed Countries Fund (LDCF) and
2. \$131,605 from the Special Climate Change Fund (SCCF)



[ T H A N K  
Y O U ]