



# 2018 Asian Evaluation Week

Making Evaluation Work at the Country Level

---

10–14 September 2018 | Chengdu, People's Republic of China

## Integrating Big Data in Evaluation

**Dr. Juha Uitto**, Director, Independent Evaluation Office  
Global Environment Facility (GEF)

# Takeaway

Participants will learn the potential applications of big data and geospatial analysis in evaluating environmental and socio-economic impacts of development interventions



# *What is Big Data?*



**Volume**



**Velocity**



**Variety**



**Value**

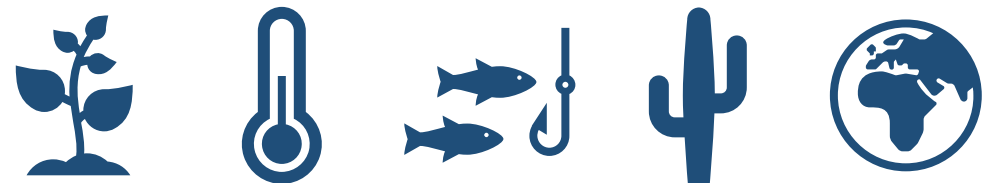


# Why use Big Data in evaluation?

## Scarcer financial resources



## Global environmental issues



# Sustainable Development Goals and Geospatial Data



# TOOLS for evaluators to operationalize large quantities of data

The logo for Flowminder.org is a dark blue square with the text "FLOWMINDER.ORG" in white, uppercase, sans-serif font centered within it.

FLOWMINDER.ORG

Flowminder  
Foundation



United Nations Global Pulse  
[unglobalpulse.org](http://unglobalpulse.org)



UN FAO Collect Earth  
[openforis.org](http://openforis.org)







**18 AGENCIES**



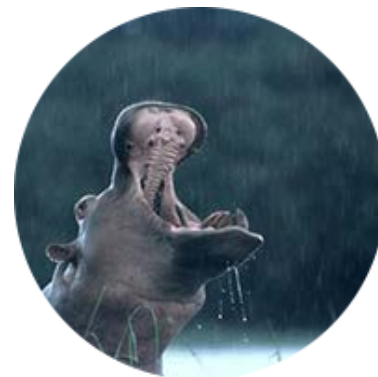
**Climate  
change**



**International  
waters**



**Chemicals  
and waste**



**Biodiversity**

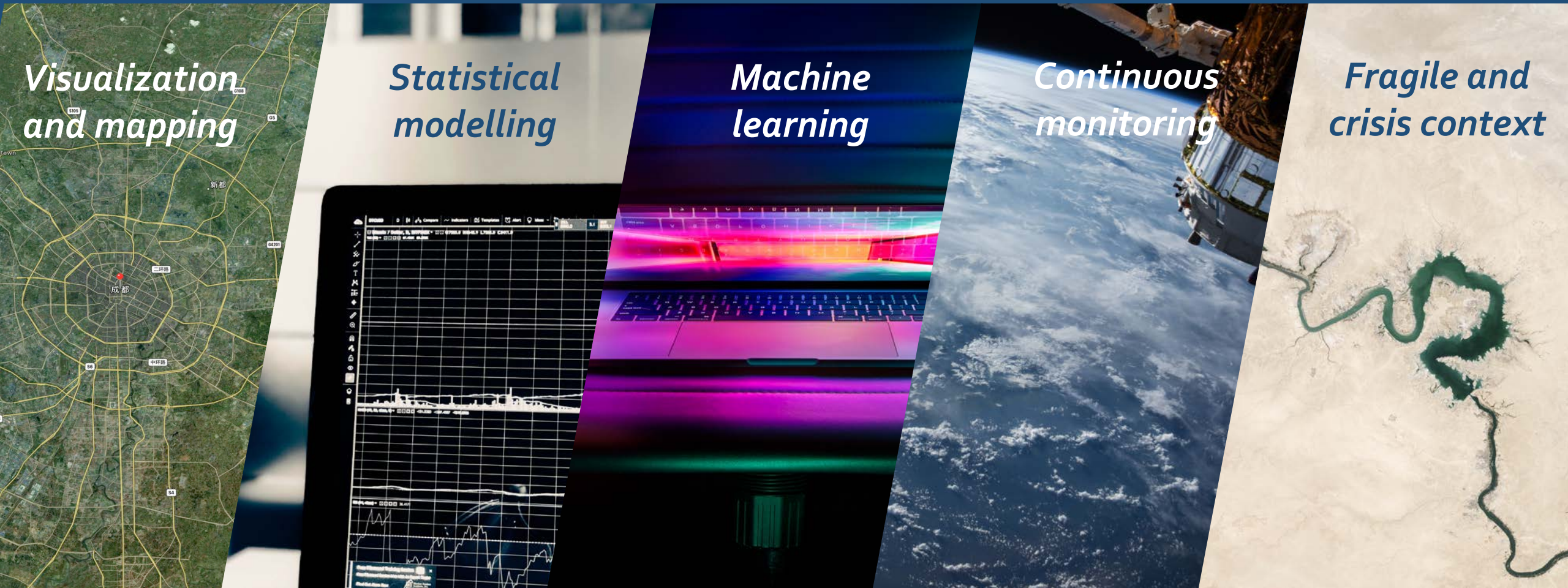


**Forests**



**Land  
degradation**

# Uses of geospatial data



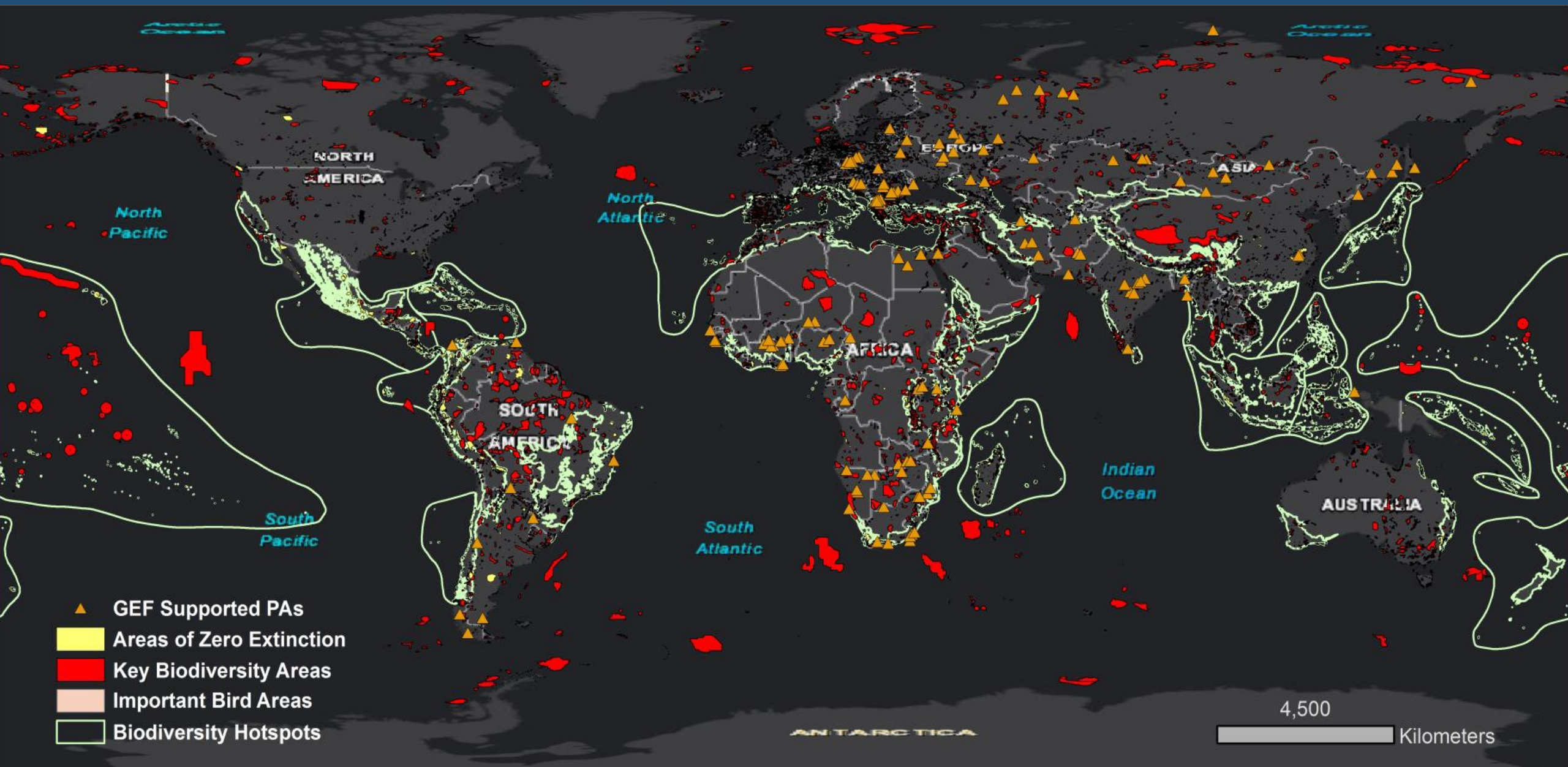




# Practical examples from GEF evaluations

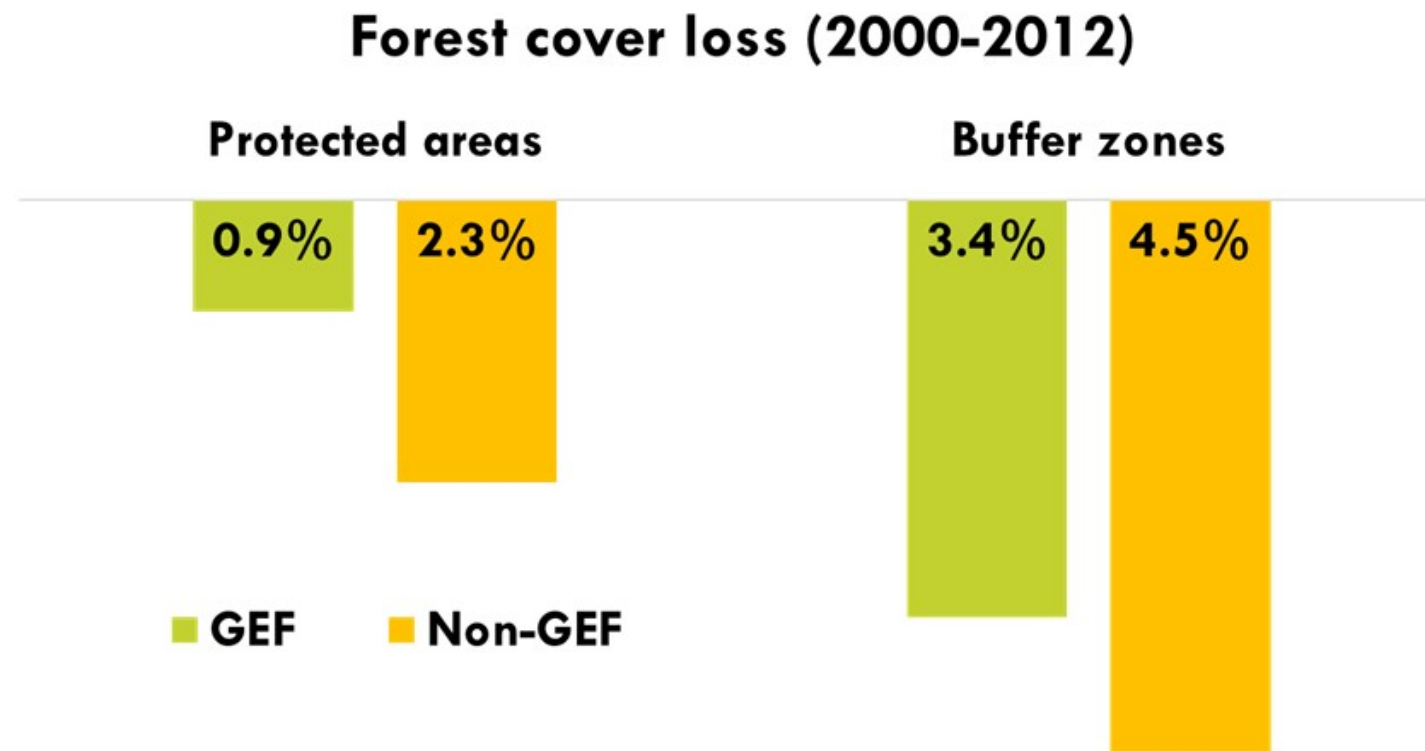




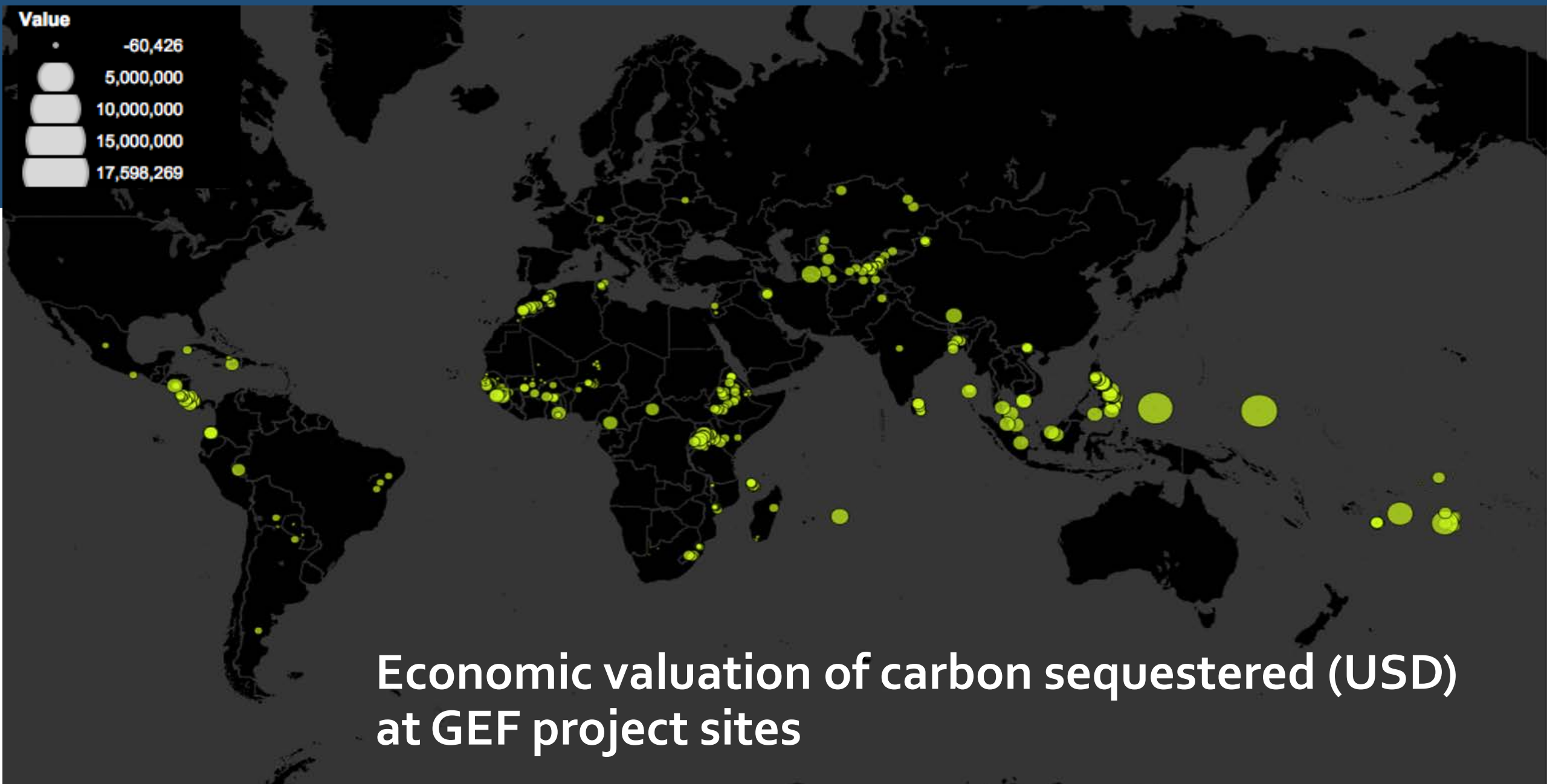


# Forest change analysis using satellite data

## GEF protected areas compared with non-GEF and adjoining buffer zone







# Value for money analysis in land degradation projects in the GEF

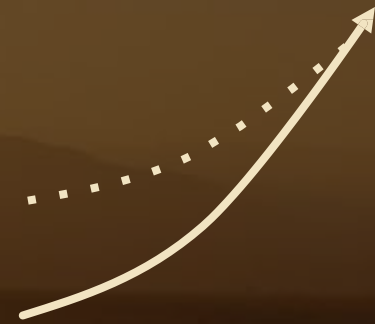
## Factors driving positive impacts



Lag time of  
4.5 to 5.5 years for  
impacts to be  
observed



Access to electricity  
associated with  
higher impact



Higher impact  
observed in areas with  
poor initial conditions



## Beneficiary survey

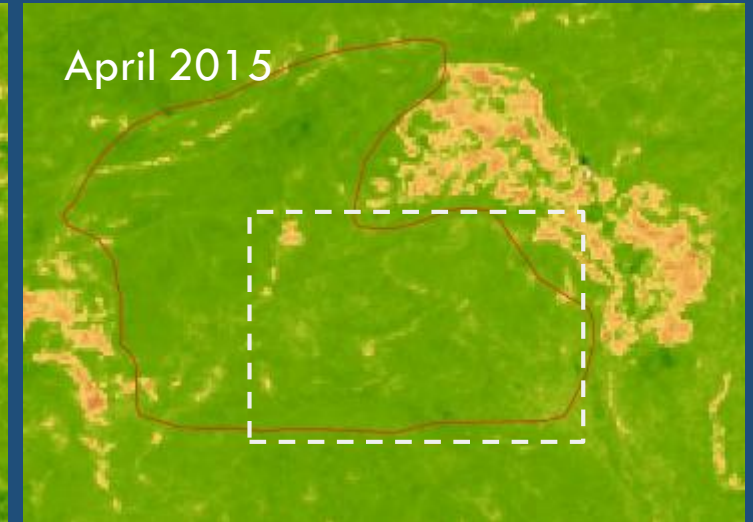
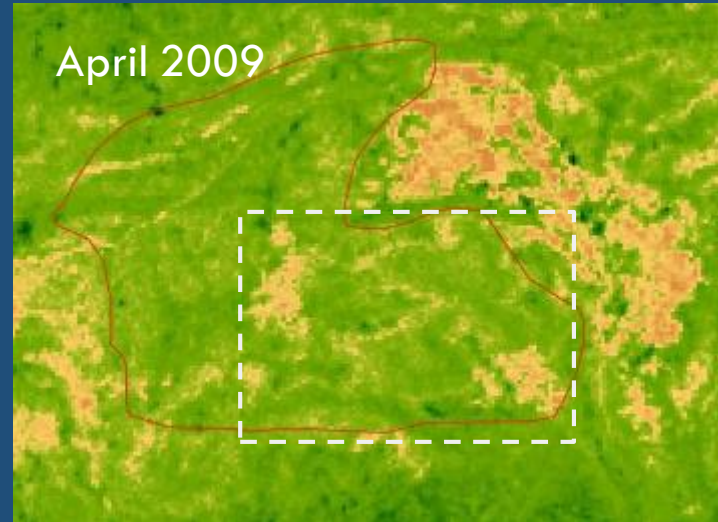


Question	Response
What is the current date and time	2016-05-18T13:27:00+05:30
Where is this interview taking place?	21.76/241625097 78.66110602300134 486.389993433995 24.0
Can I take a picture?	
Name of Interviewee(s)	Beneficiary
What is your role in the project?	Guardian
Name of Organisation	yes
Is the project creating any positive impact in the area/region/site?	to_a_moderate_
Did this project contribute to better land management?	yes
Has the project increased productivity in temperate? (Y/N)	yes
Has the project allowed for creating of new jobs and livelihood?	to_a_moderate_
Do you believe project technicians listened to you and took your voice into account when planning or implementing the project?	yes
Did the project involve men and women equally?	to_a_moderate_
To what extent is the local community involved in the project?	

## Bamboo Forest



## Time series analysis using satellite data



## TRIANGULATION ACROSS METHODS

### Qualitative methods

- Case study
- Field visits
- Focused group interview
- Stakeholders interview



# LESSONS from the use of geospatial data in evaluations



Partner with  
global institutions



Use mixed  
approaches and  
methods



Continue exploring  
new  
methodologies  
and data sources



Approach  
evaluation as a  
dynamic learning  
process







# 2018 Asian Evaluation Week

Making Evaluation Work at the Country Level

---

10–14 September 2018 | Chengdu, People's Republic of China

Geospatial data can

Answer new and complex evaluation questions

Help overcome traditional data-related constraints