



2018 Asian Evaluation Week

Making Evaluation Work at the Country Level

10–14 September 2018 | Chengdu, People's Republic of China

Data and Evidence: creating a strong foundation for development policy and effective program implementation

Juha Uitto, Director, Independent Evaluation Office
Global Environment Facility (GEF)

Focus

GEF's approach to getting policymakers pay attention

Use of better data and geospatial analysis in policy making





18 AGENCIES



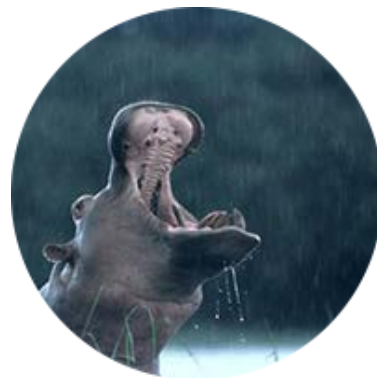
**Climate
change**



**International
waters**



**Chemicals
and waste**



Biodiversity



Forests



**Land
degradation**

Independent Evaluation in the GEF

IEO Reports directly to the Council

Comprehensive Evaluations every 4 years to inform the GEF replenishment process

Performance, Impact and Sustainability

Thematic and country cluster evaluations (SIDS, LDCs, Programs)

Policies and Institutional Issues (Safeguards, Indigenous Peoples, Private Sector, Gender)

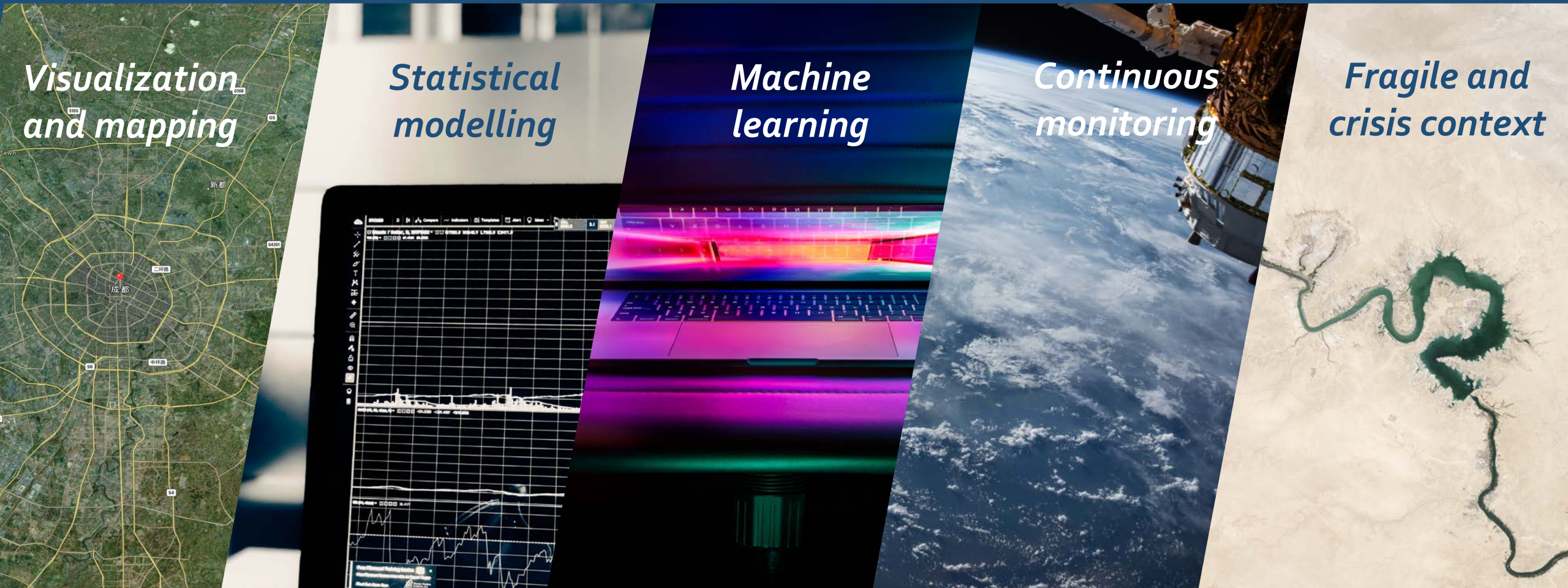
Financing, Governance and Partnership

Recommendations are adopted by the Council and feed into the programming directions, tracked through the Management Action Record

Mix of Quantitative Methods and Qualitative Evaluation Approaches



Uses of geospatial data



Benefits of Geospatial Analysis in Environmental Evaluation

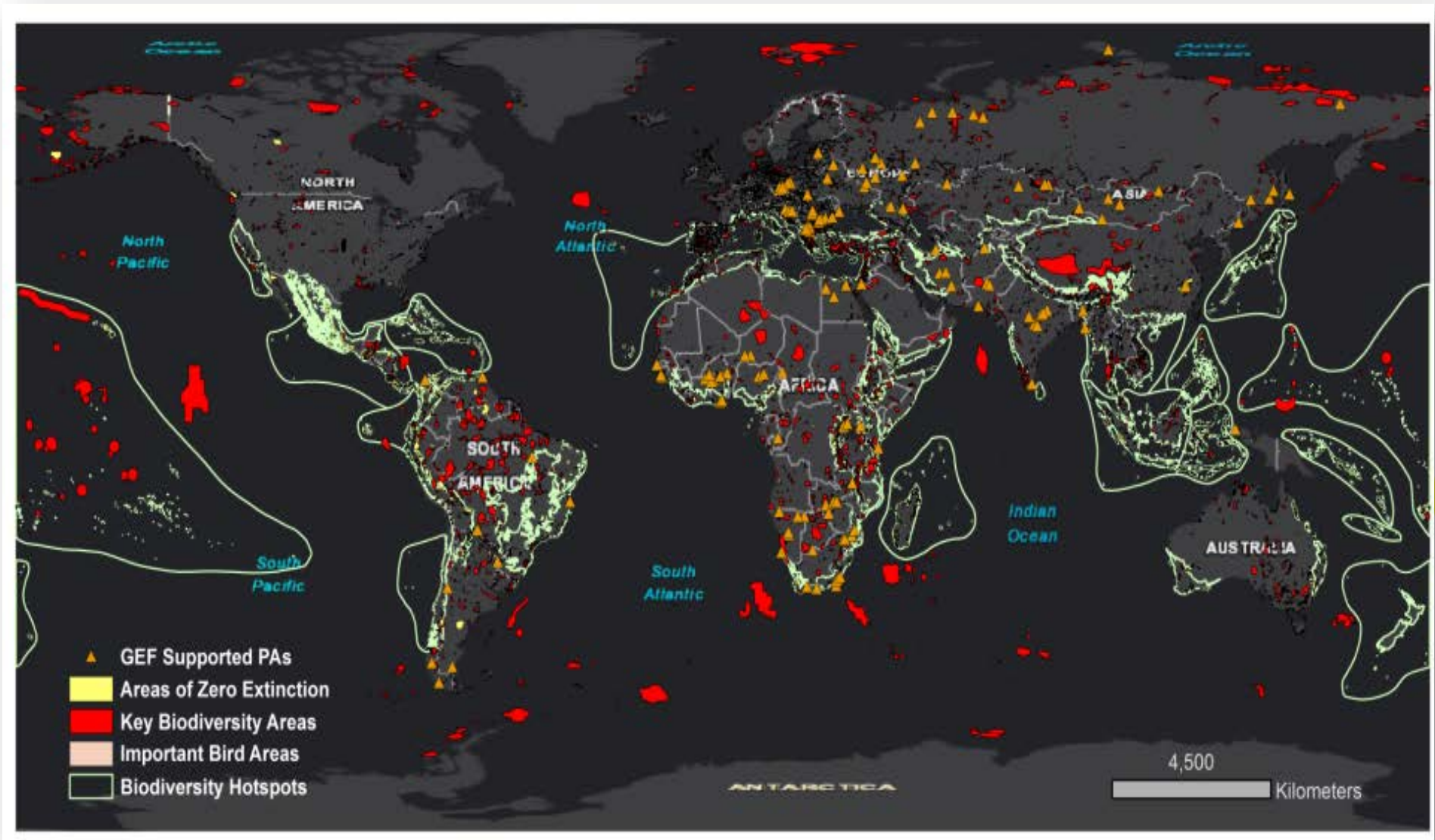
- ✓ Relevance
 - ✓ Outcome and Impact Analysis at different scales
 - ✓ Efficiency in Data Collection
 - ✓ Ecological Forecasting
 - ✓ Value for Money
- ✓ Objectivity, Transparency and efficiency in data collection
- ✓ Works well in conjunction with other evaluation methods



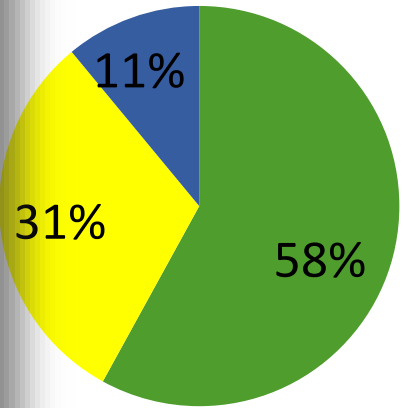


Practical examples from GEF evaluations

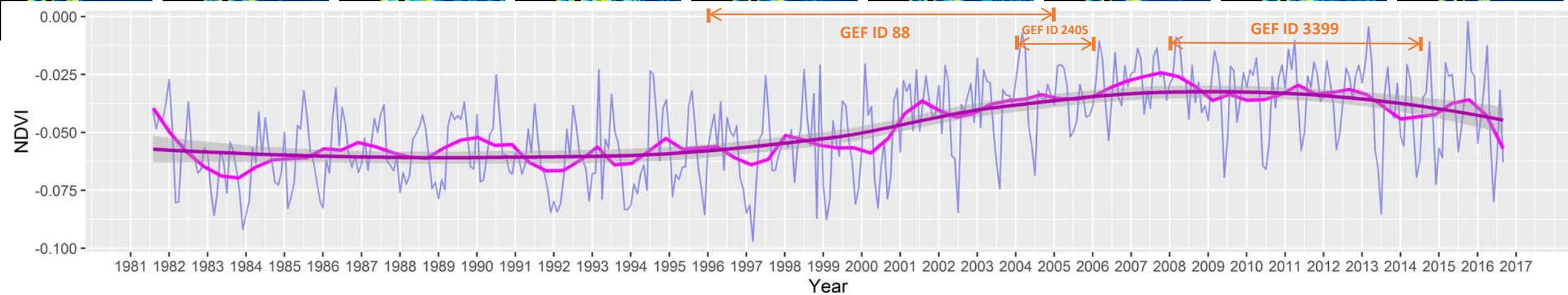
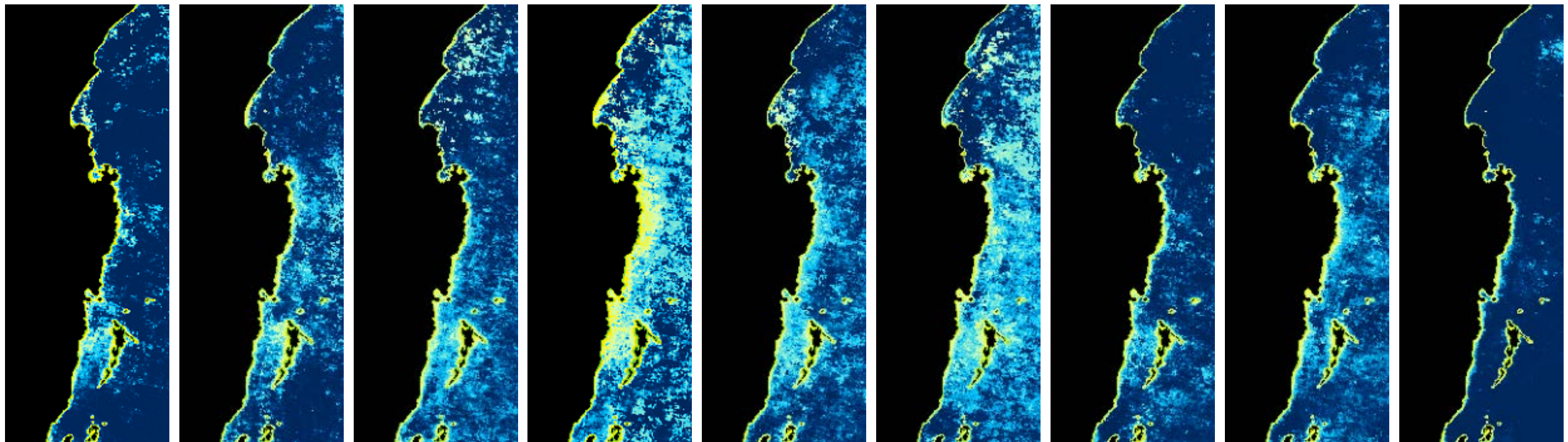
Addressing Relevance in Biodiversity

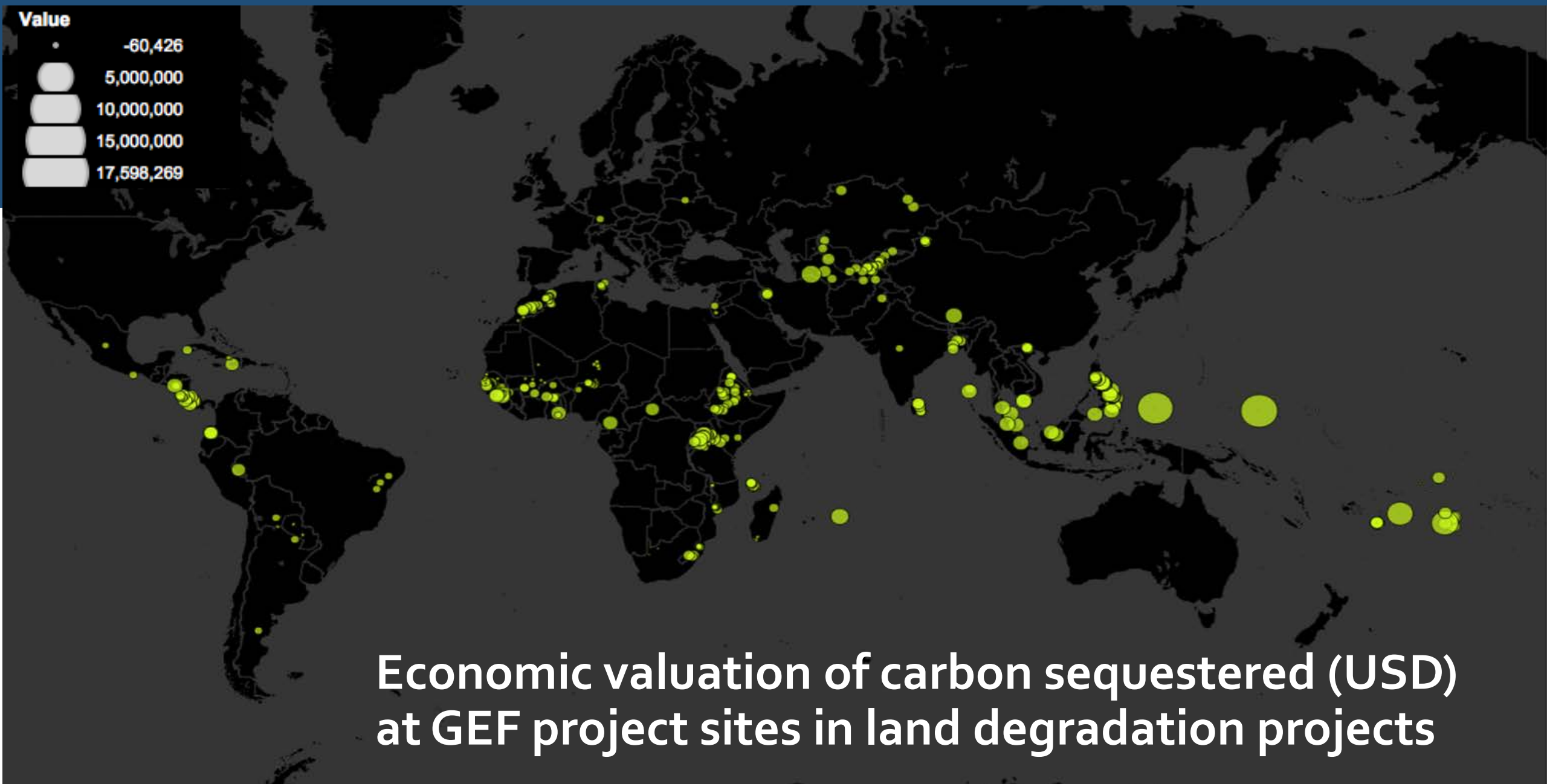


KEY BIODIVERSITY
AREAS(KBA)



DEMONSTRATING IMPACT: LAKE VICTORIA

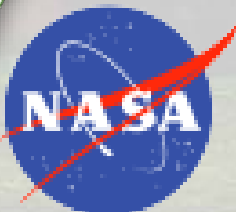
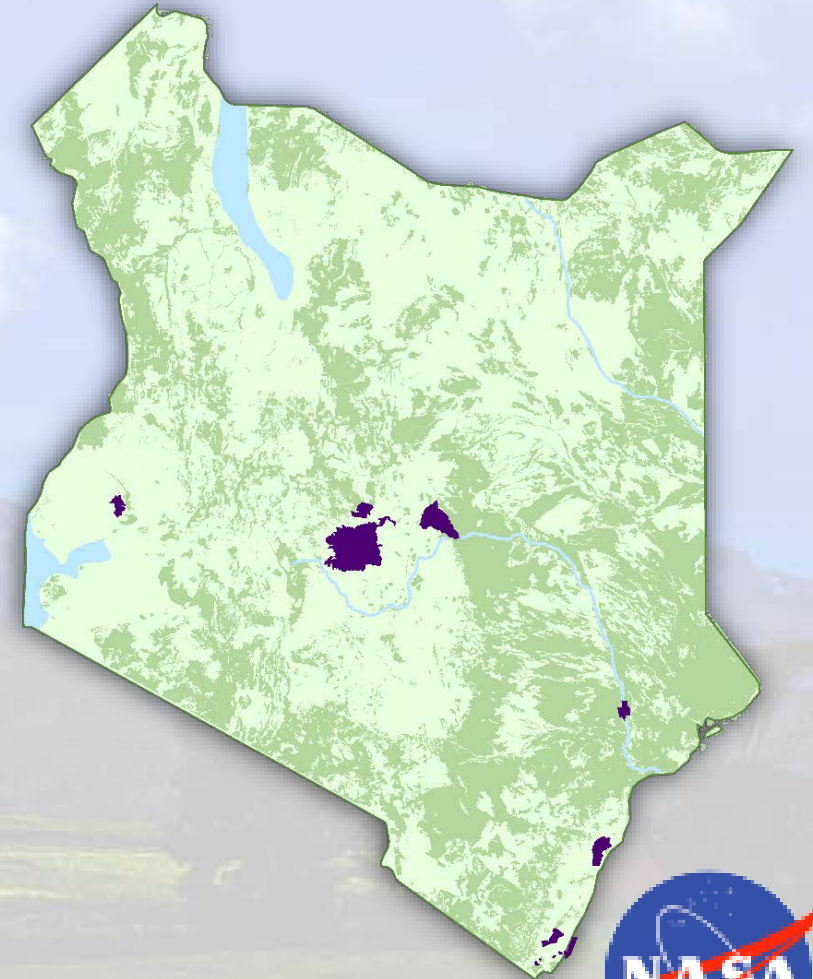




Ecological Forecasting in Kenya

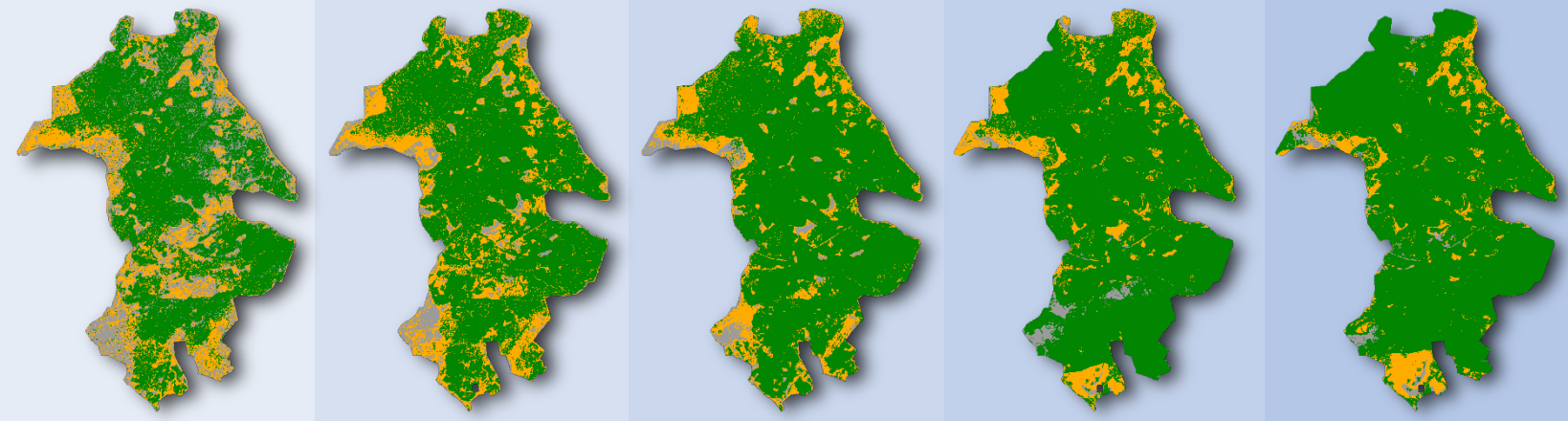
“Estimating Carbon Sequestration within Global Environment Facility (GEF) Funded Protected Areas in Kenya to Aid Future Policy”

- Research collaboration between the Global Environment Facility’s Independent Evaluation Office (GEF-IEO) and NASA DEVELOP program
- Evaluated land cover and aboveground carbon stocks for 12 GEF protected areas in Kenya

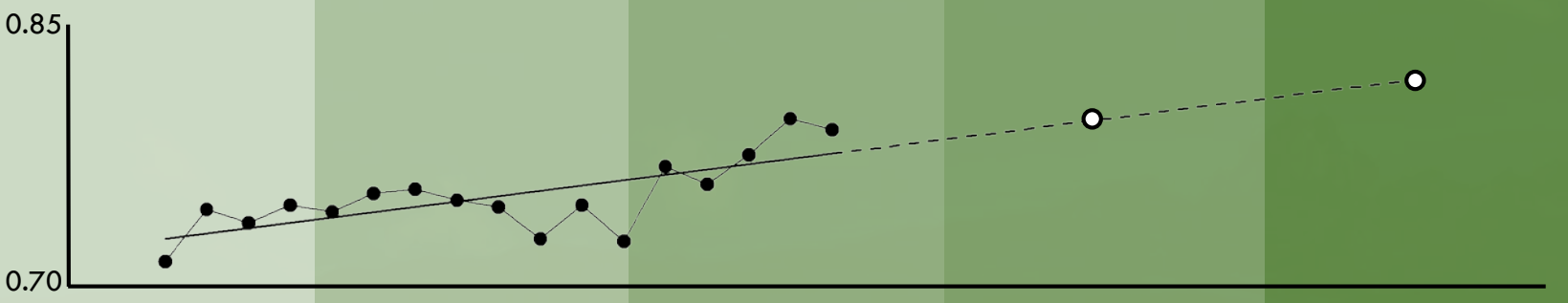


Land Cover Change

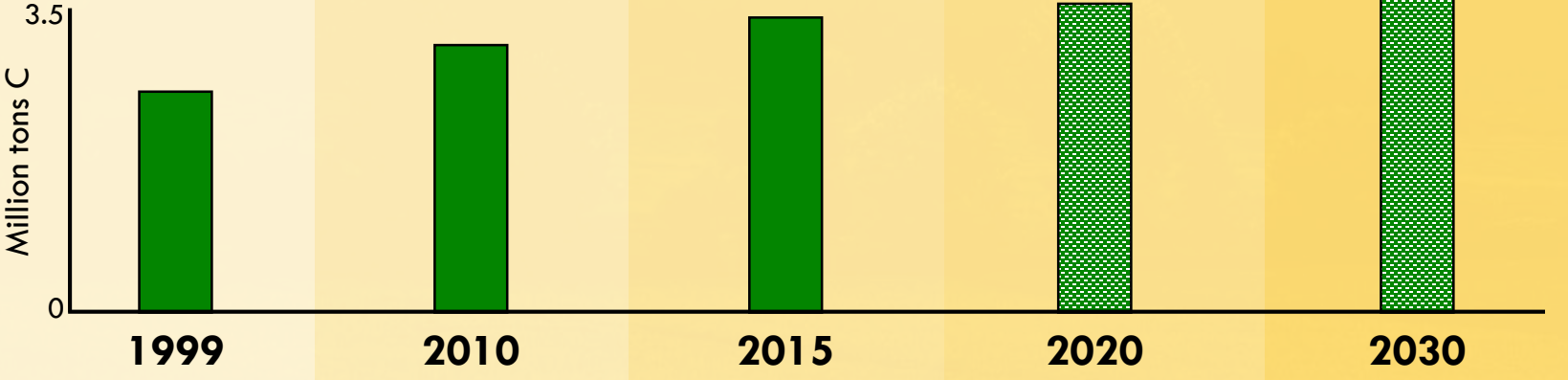
Forest Non-vegetated Shrub



NDVI

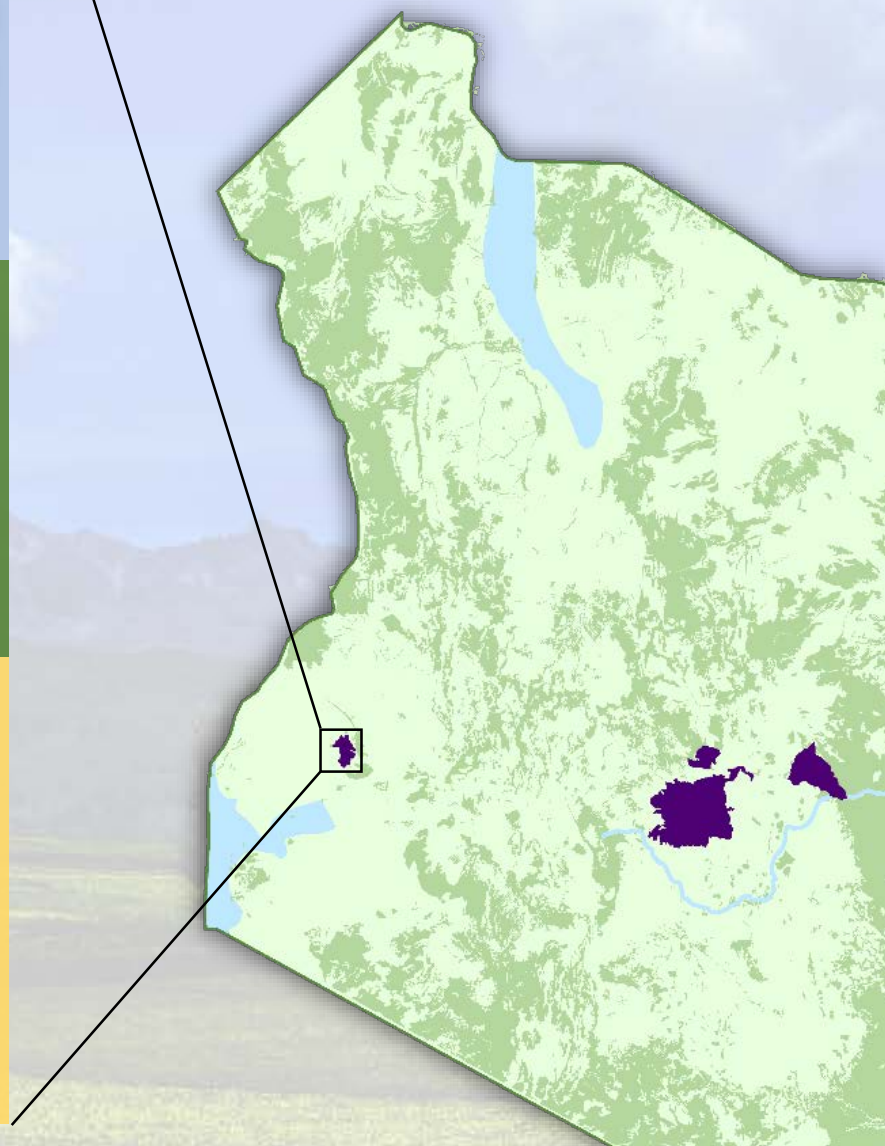


Carbon Sequestration



Case Study:

Kakamega Forest Reserve



LESSONS from the use of geospatial data in evaluations



Partner with
global institutions



Use mixed
approaches and
methods



Continue exploring
new
methodologies
and data sources



Approach
evaluation as a
dynamic learning
process

