



GLOBAL ENVIRONMENT FACILITY
INVESTING IN OUR PLANET



New Book Launch

October 27, 2021

Advances in Evaluation & Development

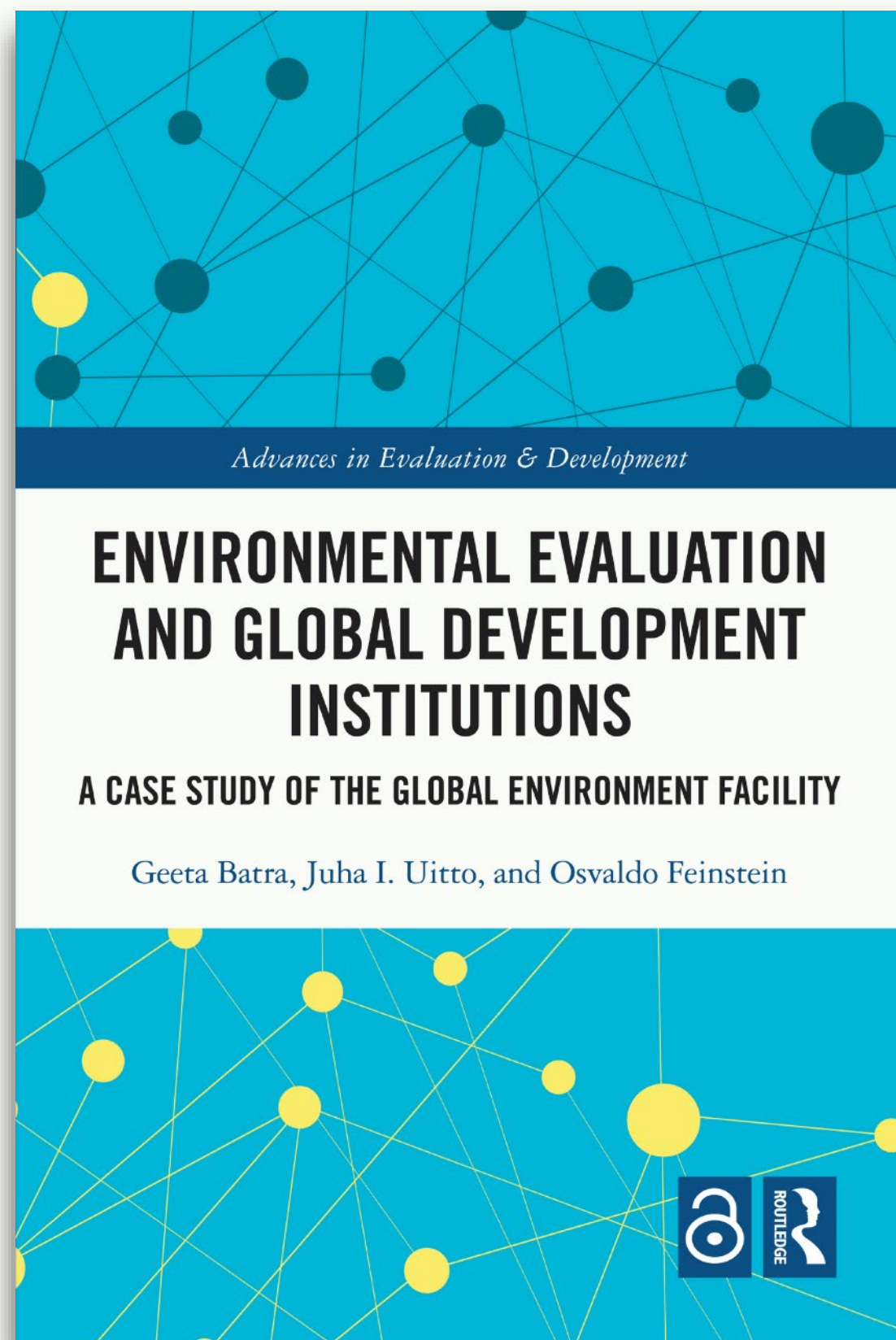
ENVIRONMENTAL EVALUATION AND GLOBAL DEVELOPMENT INSTITUTIONS

A CASE STUDY OF THE GLOBAL ENVIRONMENT FACILITY

Geeta Batra, Juha I. Uitto, and Osvaldo Feinstein

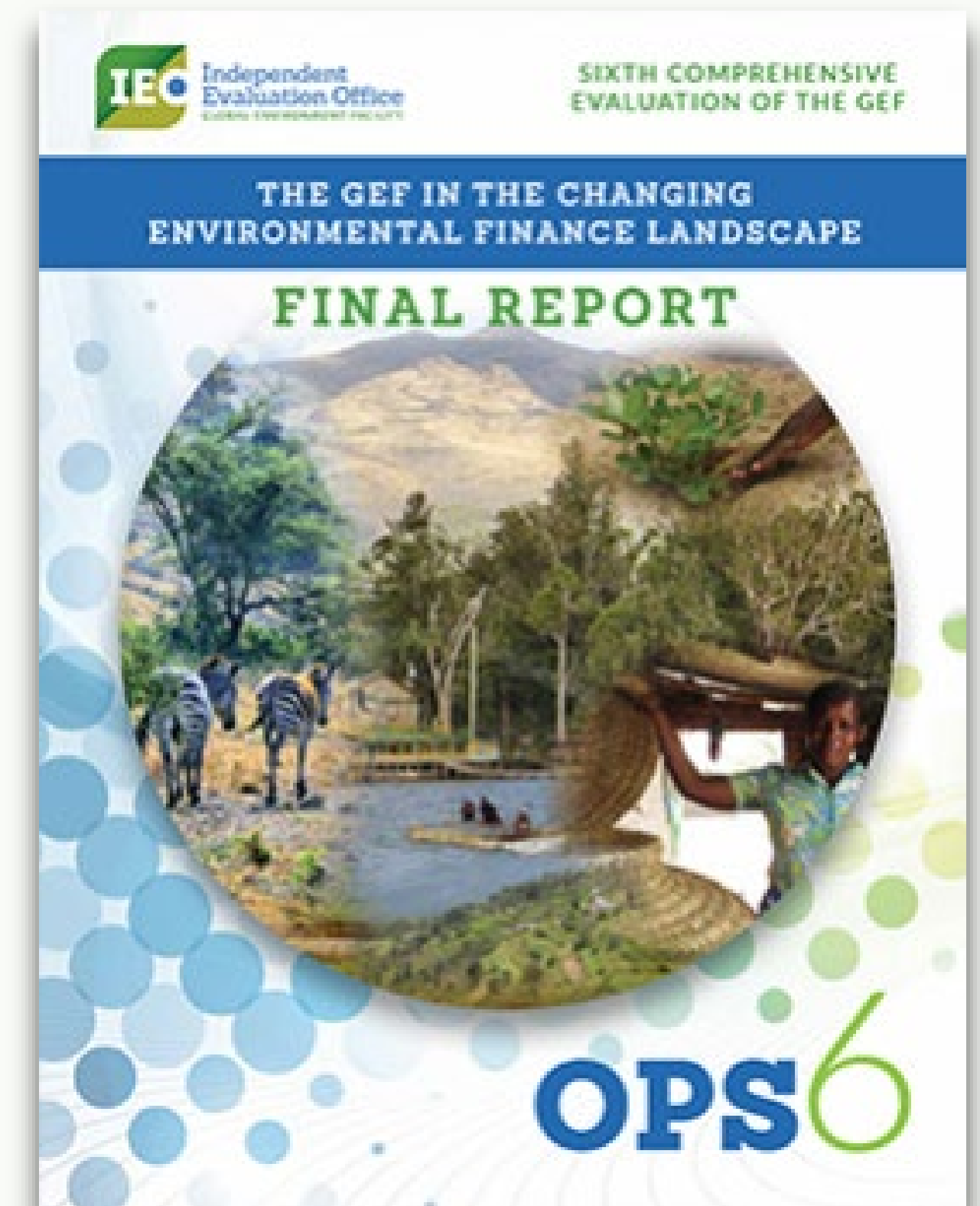


Scope



**Draws on Sixth Comprehensive
Evaluation of the GEF
Covers the 2014-2018 GEF
period.**

**Conducted every 4 years
Informs the replenishment
process**

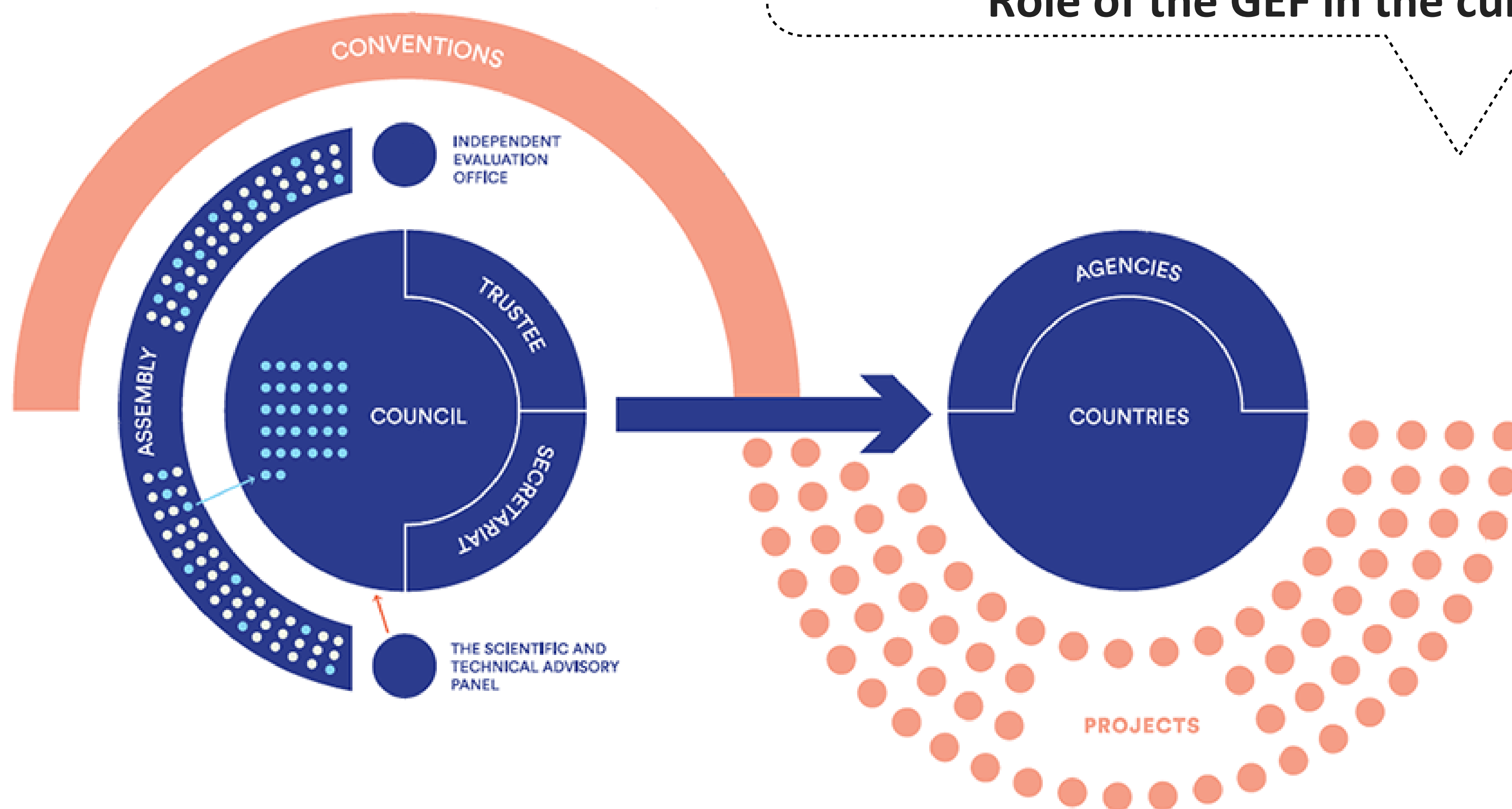




Introduction

Structure of the GEF—the Governing Council, a partnership comprising 18 Agencies, the Scientific and Technical Advisory Panel, and the Independent Evaluation office.

Role of the GEF in the current landscape





Chapter 2

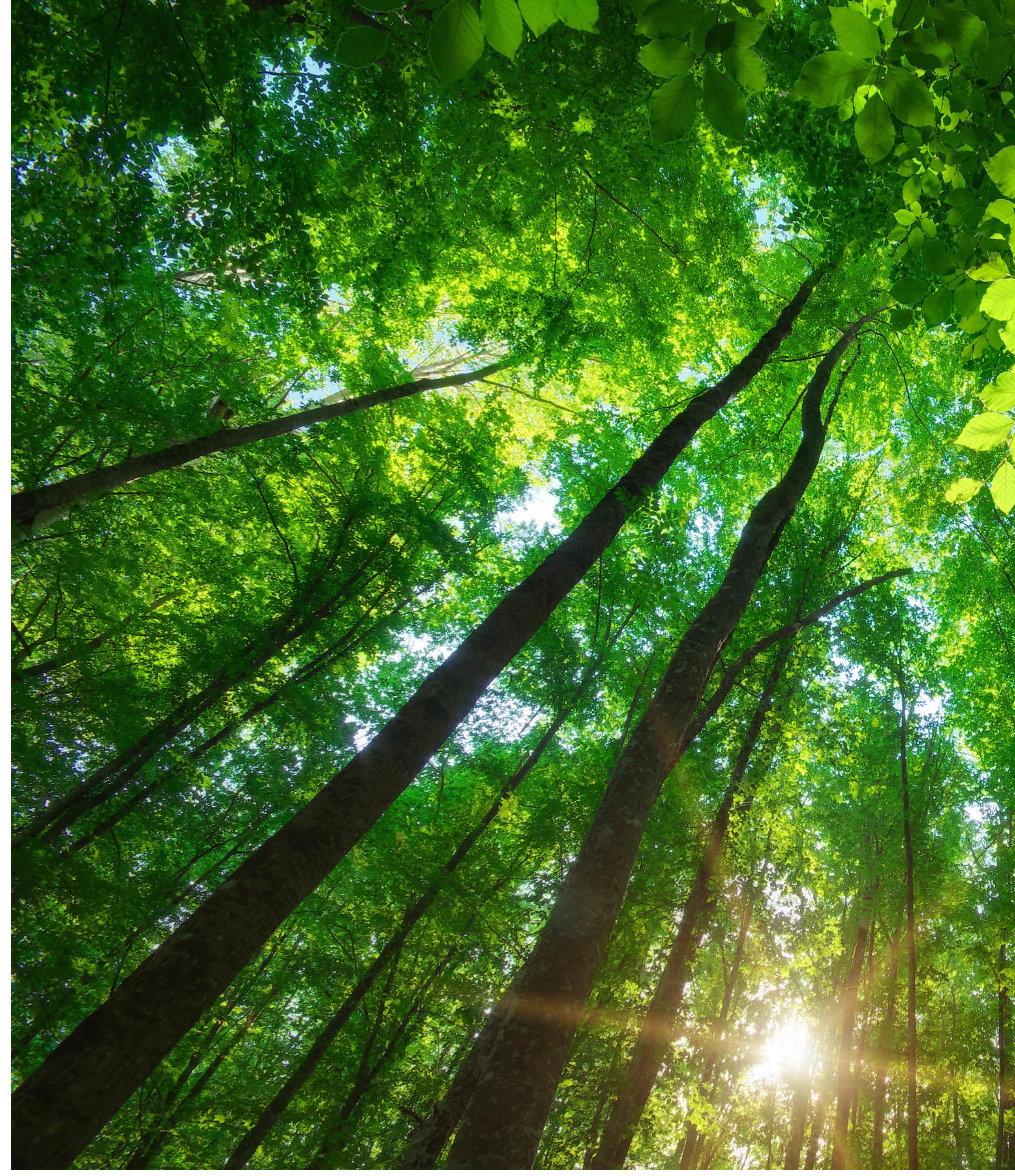
**Evolution of the evaluation function
which culminates in the establishment of the
Independent Evaluation office.**



Chapter 3

**Important role of evaluation in
the GEF replenishment process**

**Framework for the
comprehensive evaluation on
Which this book is based.**



Chapter 4

Broad spectrum of quantitative and qualitative approaches used together as “mixed approaches”

Measure “value for money” and effectiveness of GEF interventions.



Chapter 4

Geospatial approaches provide reliable and effective measures of changes over time, baselines

Best used in conjunction with qualitative approaches to understand context

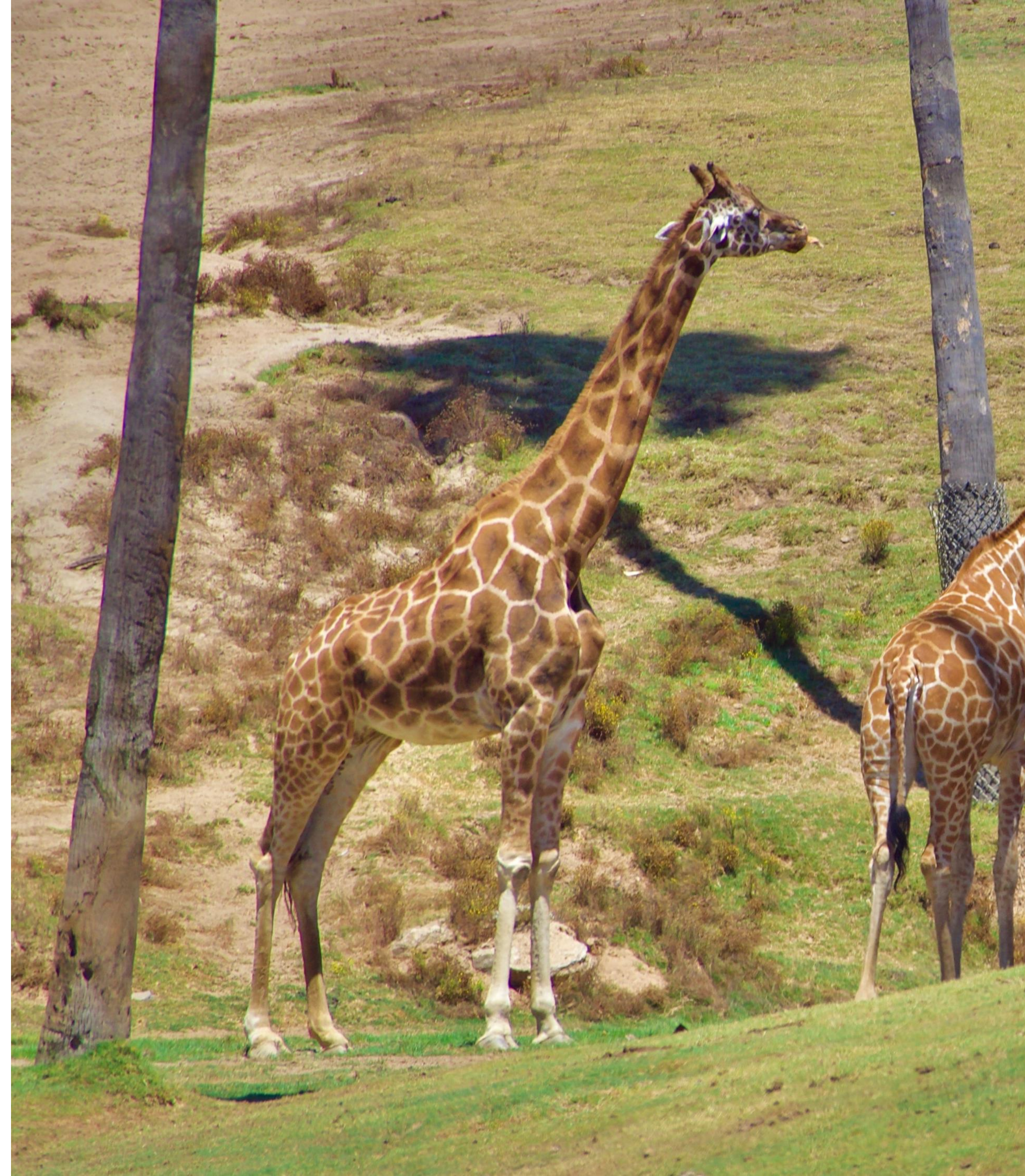




Key Section:

GEF Performance

Long history of strong performance built through monitoring results, learning and knowledge sharing.





Key Section:

Transformational Change

Transformational Change Imperative

Developed a framework for assessing transformative change



Key Section:

Strong Stakeholders

Use and influence of the comprehensive evaluation in the replenishment process

Important to have strong support from governing Council and the partnership





Conclusion

Lessons from program evaluations that are relevant for the pandemic

Importance of measuring socio-economic co benefits along side environmental outcomes

Applying a systems approach to understanding complex relationships

