



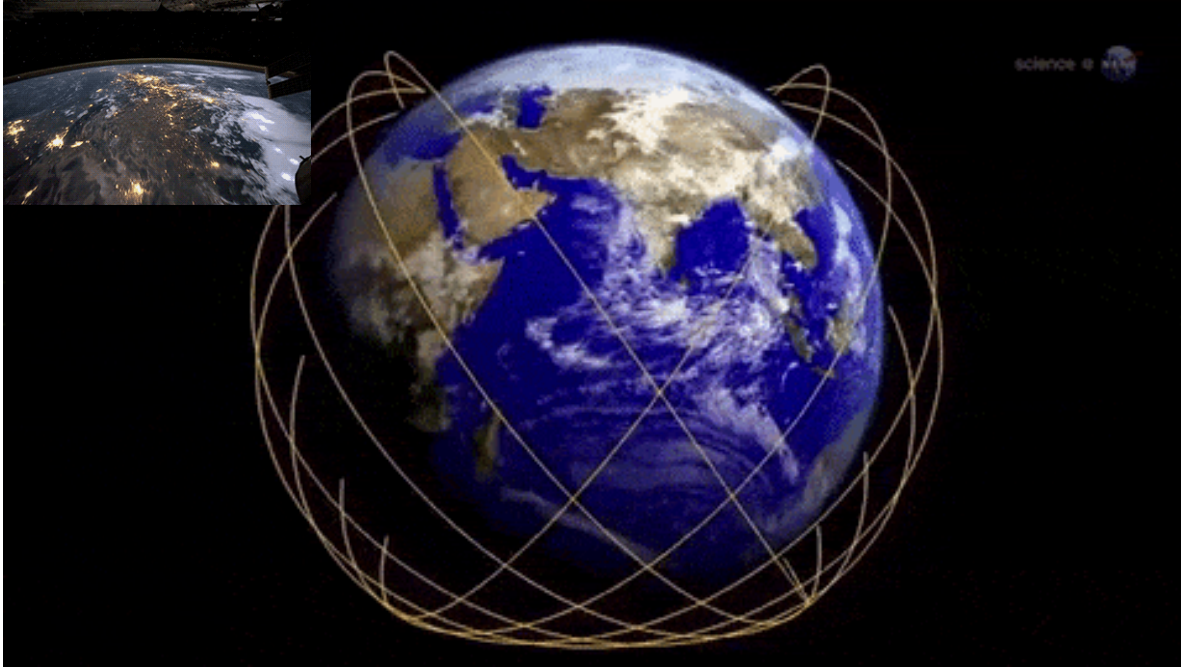
Evaluation Methods in Fragile, Conflict and hard to reach Situations

Anupam Anand, Evaluation Officer
Independent Evaluation Office, Global Environment Facility
Washington DC

Lessons from an Evaluation of the Global Environment Facility's interventions in Fragile
and Conflict-Affected Situations

gLOCAL Evaluation Week, June 3rd, 2021

Why geospatial methods in Conflict and Fragile Situations



- ~3400 operational satellites
- High resolution data available
- Rapid advancement in analytical tools

**Logistical
Challenges**

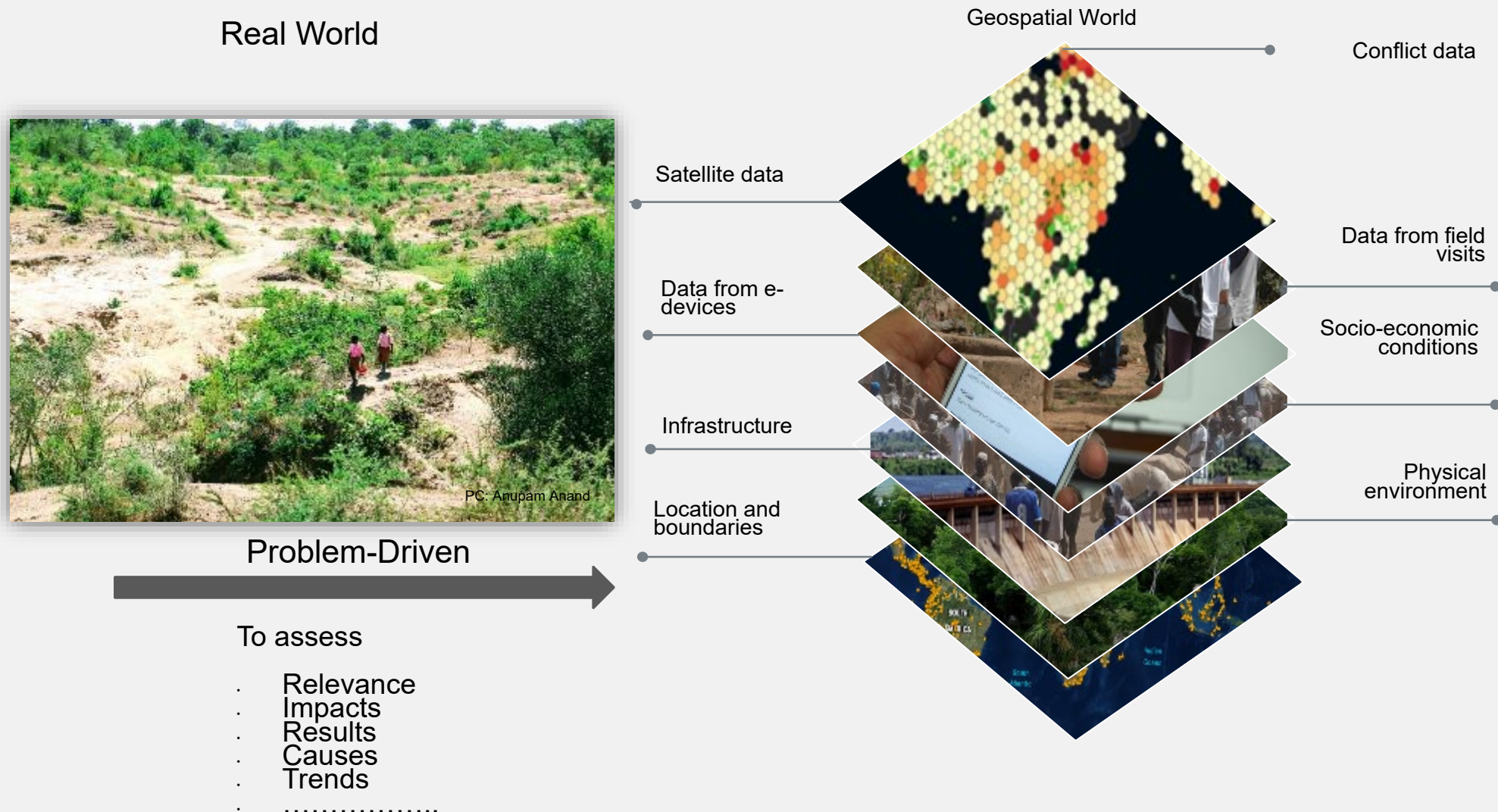
**Methodological
Challenges**

**Analysis at
different scales**

**Aiding objectivity
and transparency**

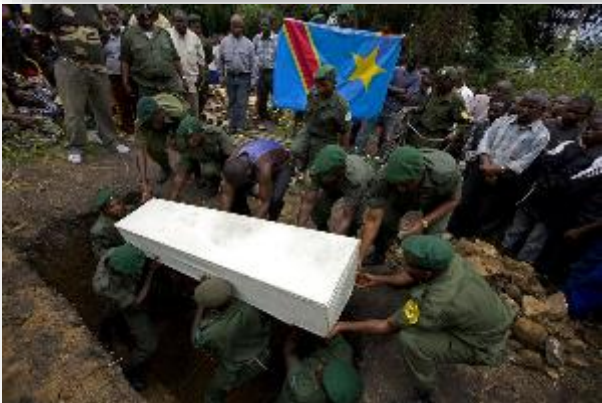
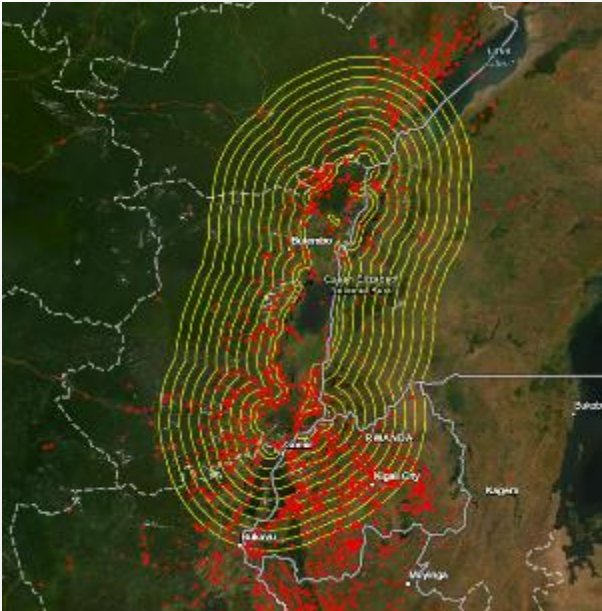
**Applicable to
variety of
evaluation
methods and
themes**

What is special about geospatial?

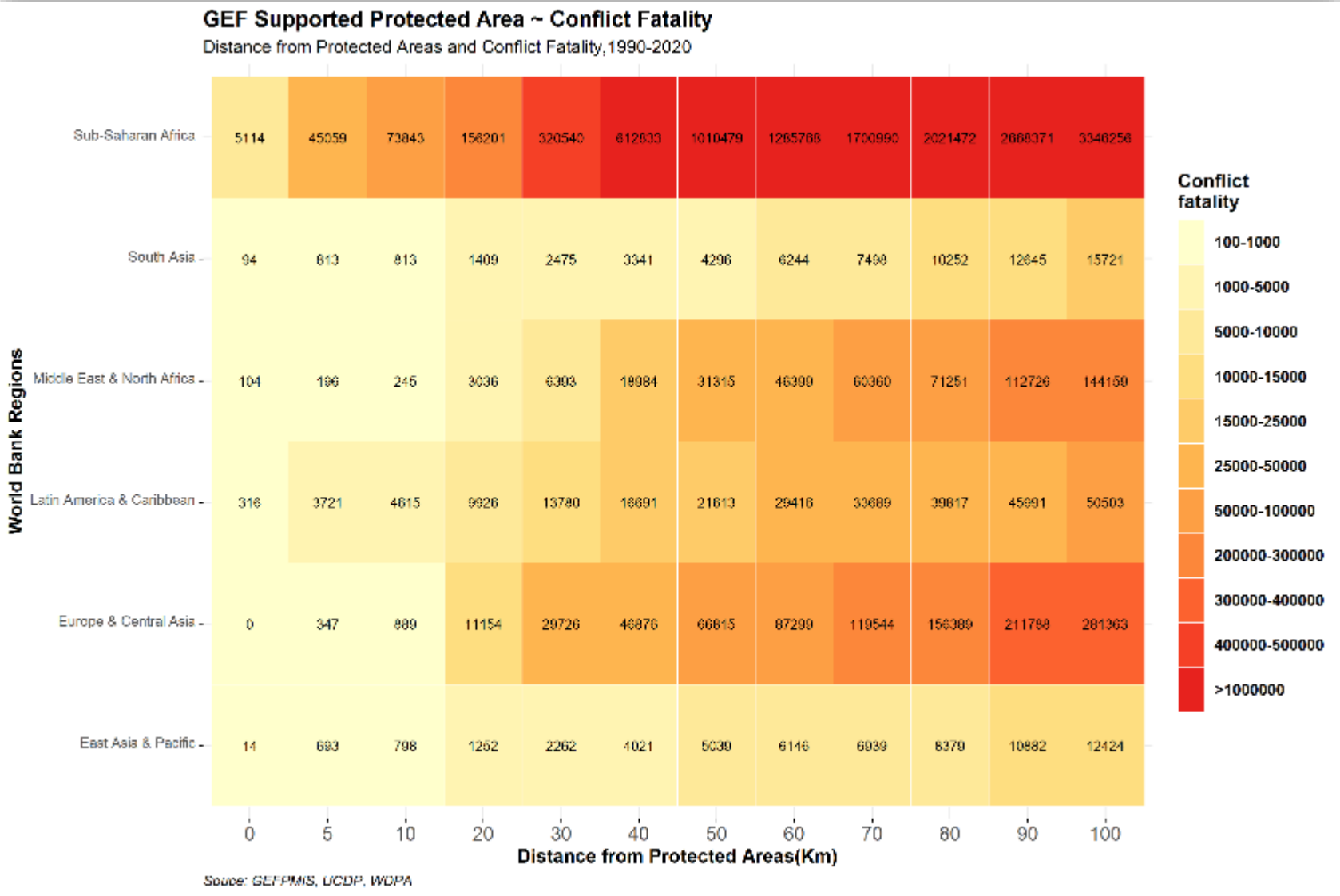


Spatial analysis focuses on the *statistical analysis* of patterns and underlying processes

Context Awareness : Help with evaluation questions and mission planning



Pic: Virunga NP



Extent of the problem in hard to reach, isolated and unsafe areas



WORLD Colombia

Kidnapping of six people in Colombia confirmed by the ELN

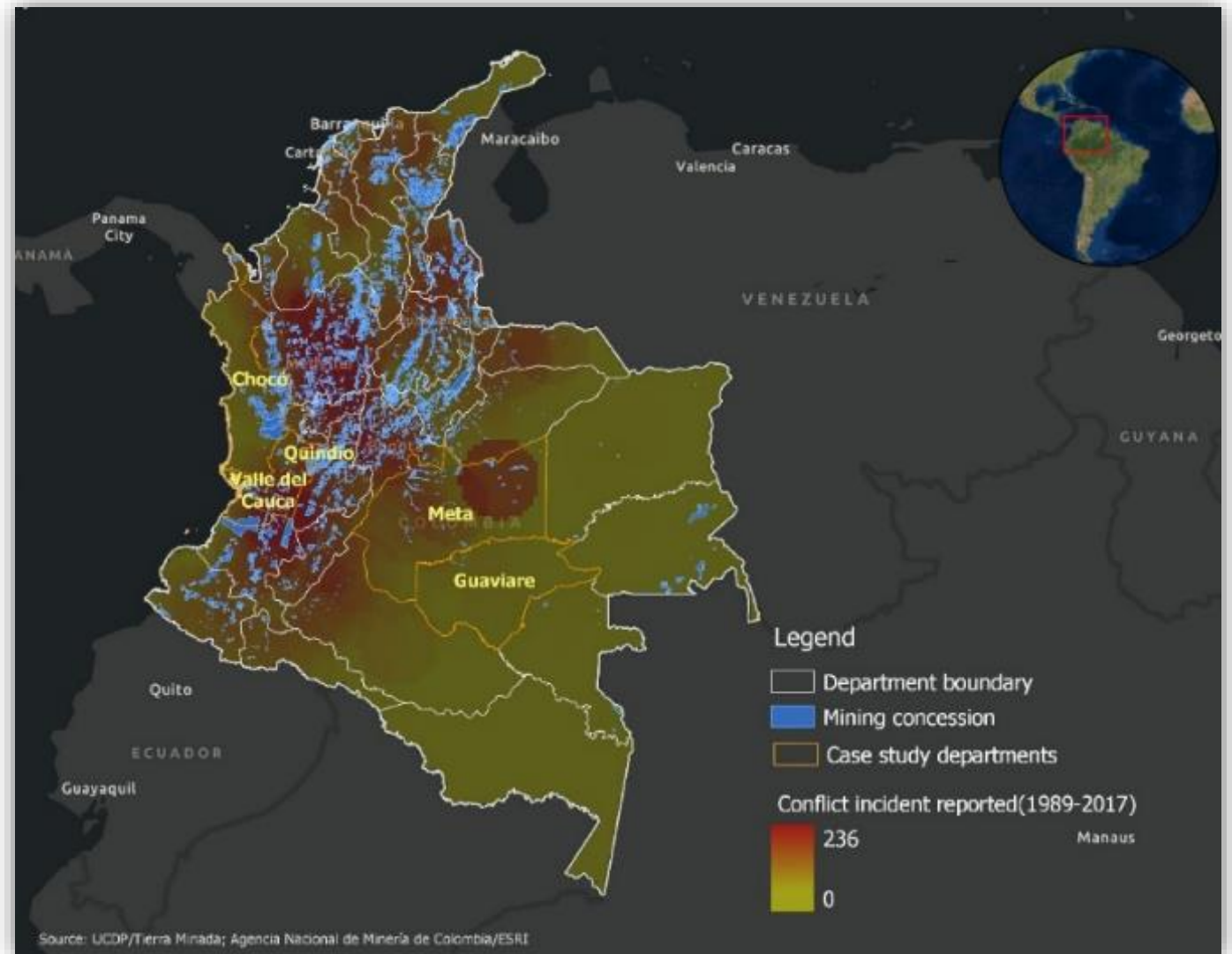
On August 1, the outgoing Government of Colombia and the National Liberation Army concluded their sixth cycle of talks in Havana without achieving their objective of specifying a bilateral ceasefire that guarantees the progress of the peace process, which began more than a year ago, year.

EFF AUG 4, 2018 11:35 AM

Pic: GEF IEO/ Anupam Anand

Extent of the problem in hard to reach, isolated and unsafe areas

Overlapping Mining areas(mostly illegal), deforestation and hotspots of Conflict



Extent of the problem in hard to reach, isolated and unsafe areas

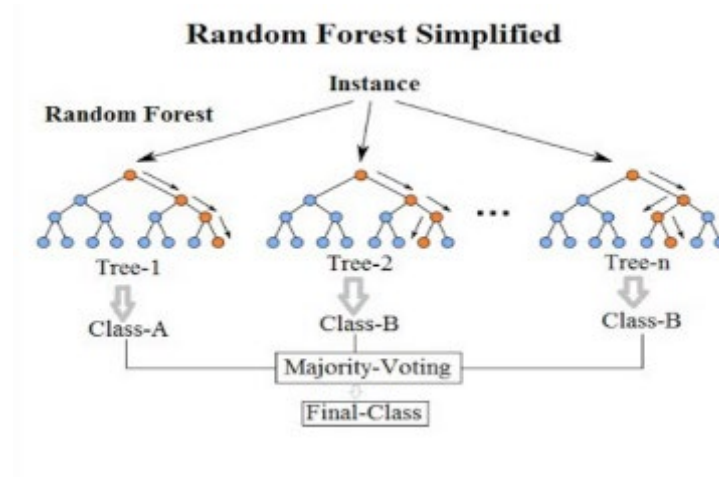


Drone image of an illegal mining site

Pic: GEF IEO/ Anupam Anand

Extent of the problem in hard to reach, isolated and unsafe areas

Model accuracy: 0.95



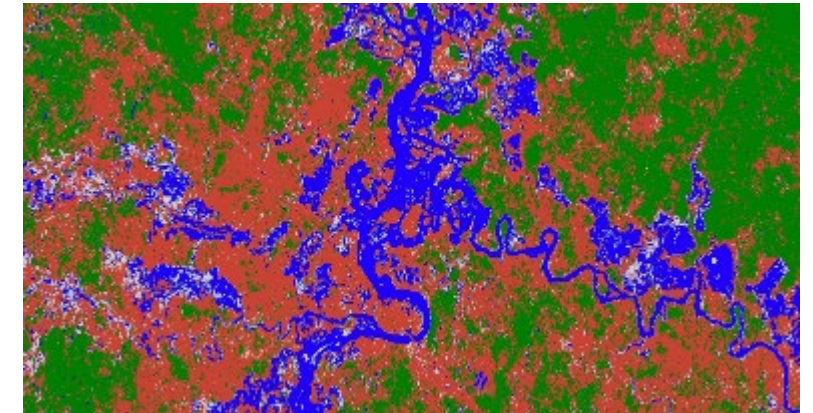
Validation Accuracy: 0.85



Optical data

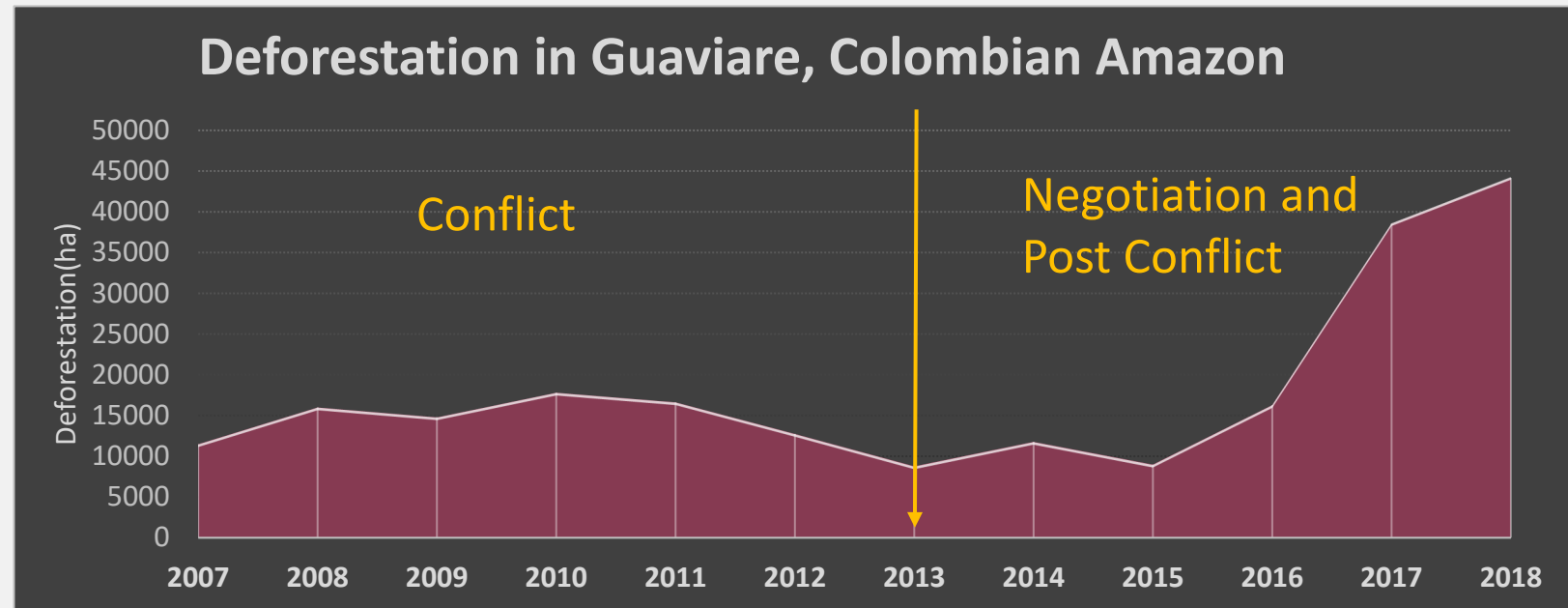
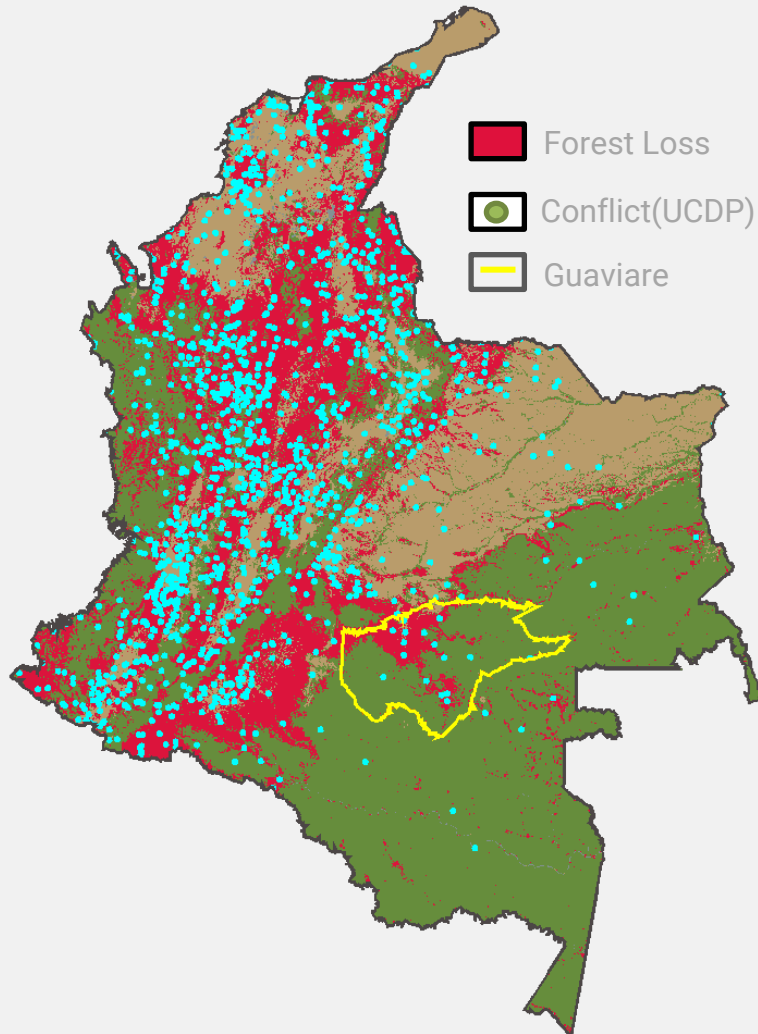


Radar data



Extent of Mining

Extent of the problem in hard to reach, isolated and unsafe areas



“It’s the peace that brings deforestation” - A project participant.

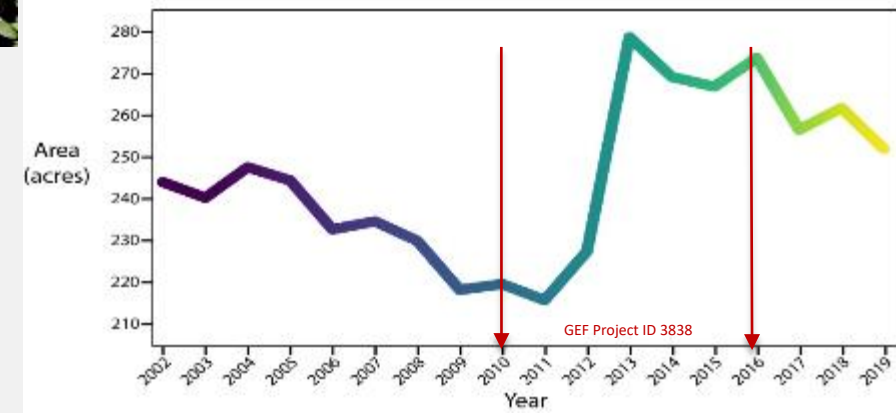
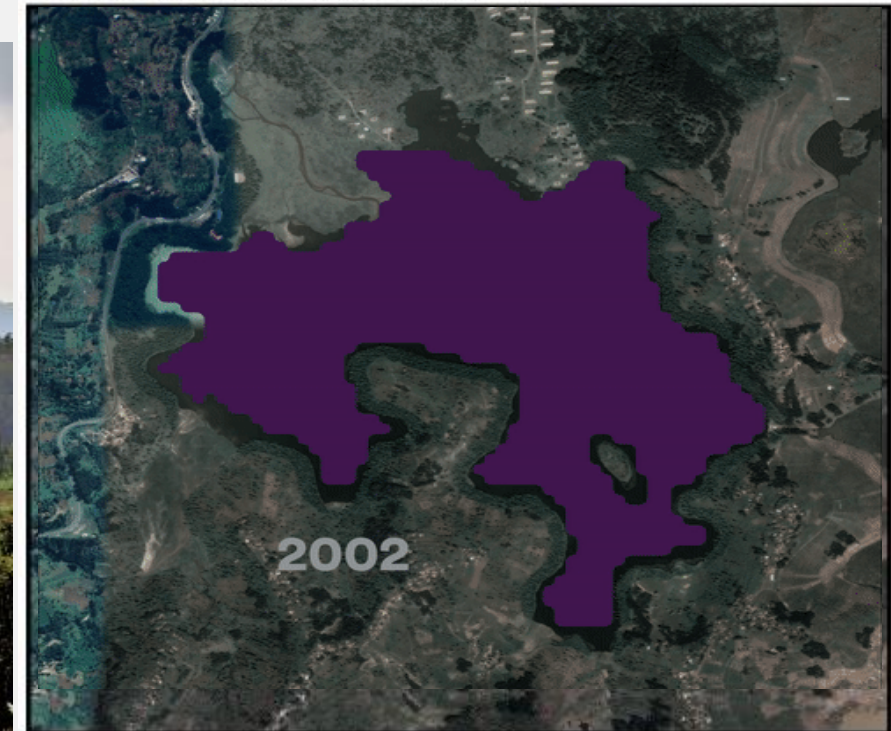
Forest Conservation and Sustainability in the Heart of the Colombian Amazon(GEF ID 5560, WB P144271)

EVALUATION: Impact

Rehabilitation of Lake Karago, Rwanda



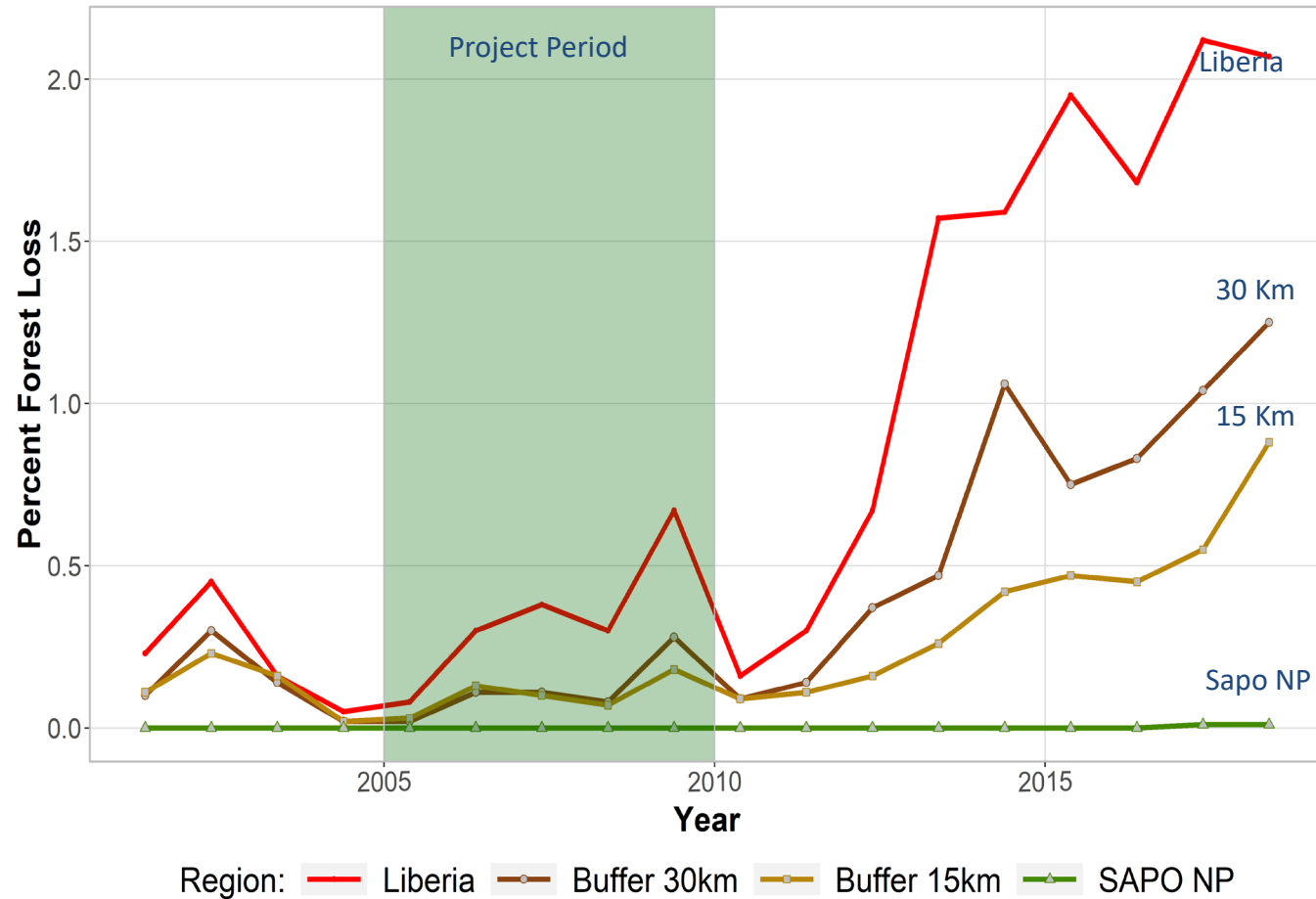
Lake Karago Lake Shores 2002 - 2019



Remote sensing was helpful for assessing and explaining results

EVALUATION: Sustainability

Liberia - SAPO National Park



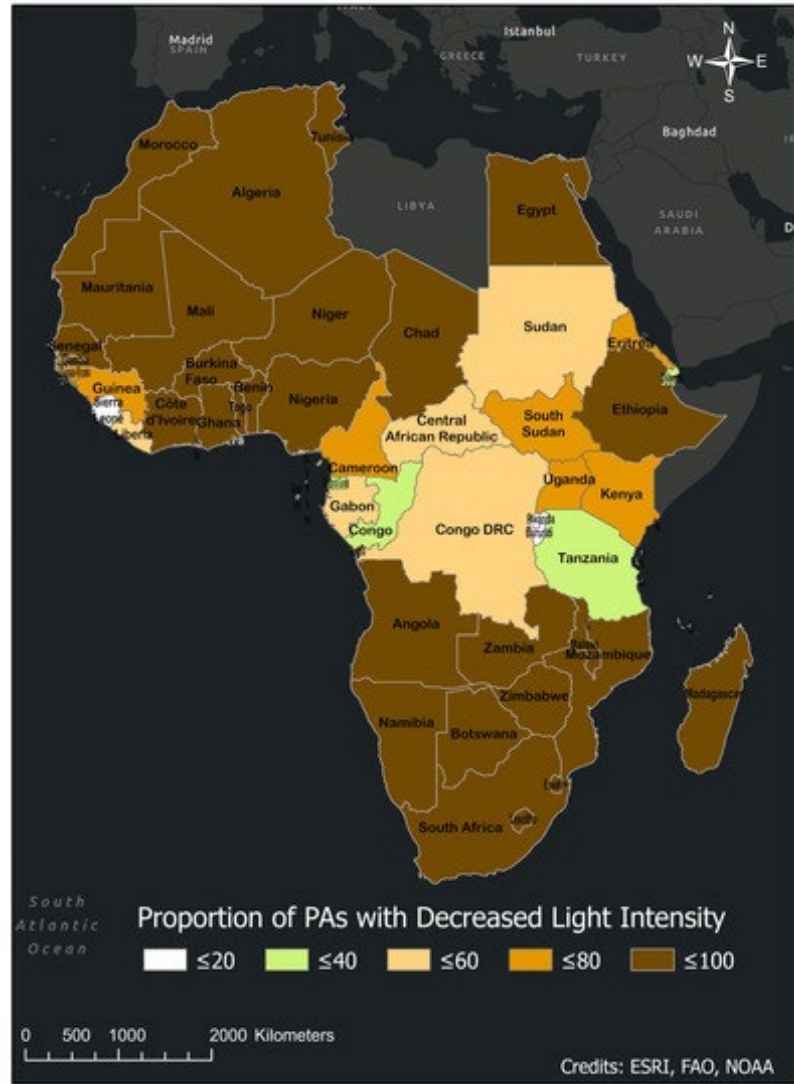
SAPO NP, Liberia - Forest Loss



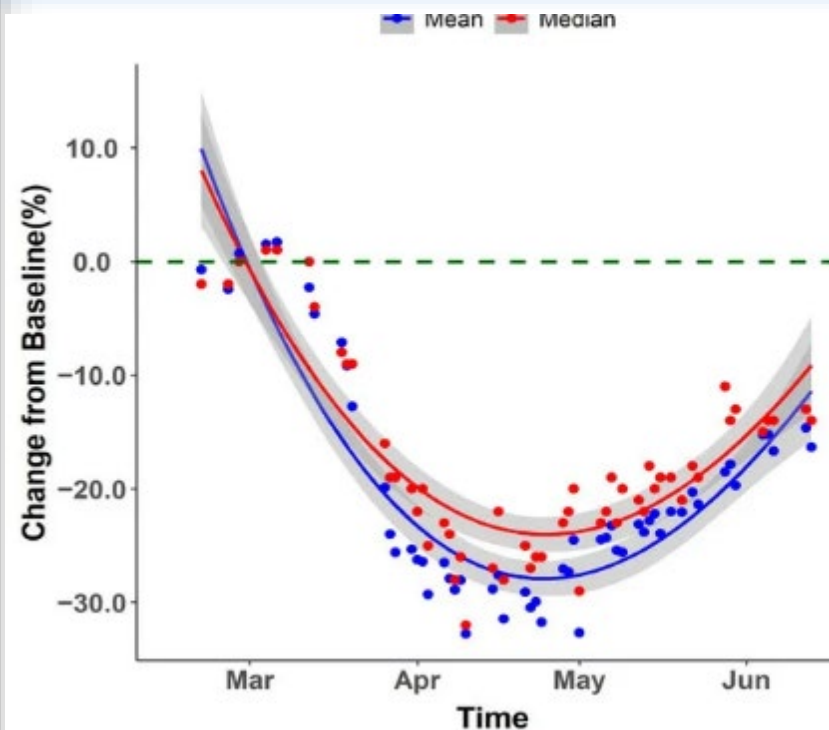
2001

(Establishing The Basis For Biodiversity Conservation In Sapo National Park and In Southeast Liberia)

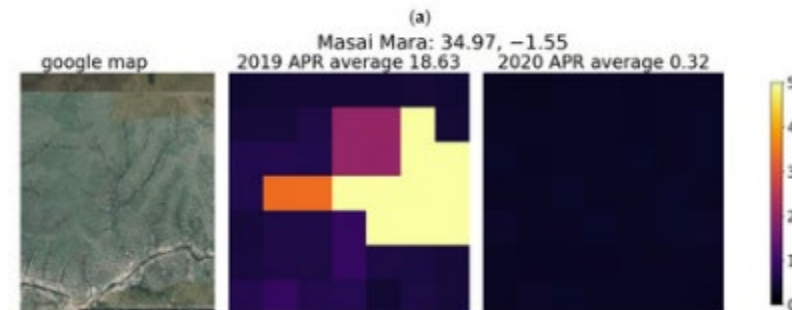
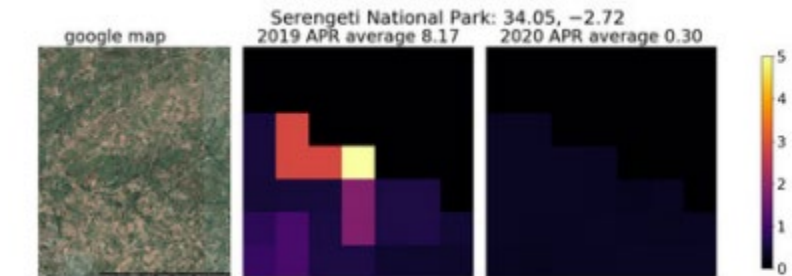
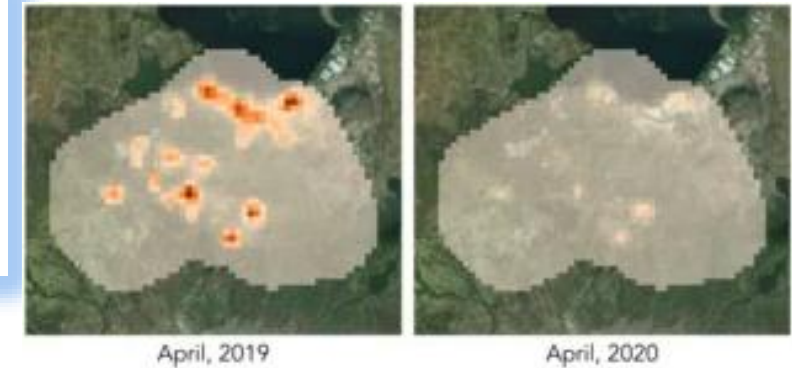
COVID: Rapid assessment



Overall, 75 percent protected areas saw a decrease in light intensity, many of these include GEF supported protected areas.



Cellphone mobility data



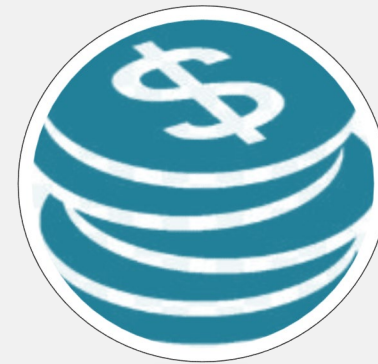
Nighttime lights data

Lessons



Partnerships

**Use mixed
approaches
and methods**

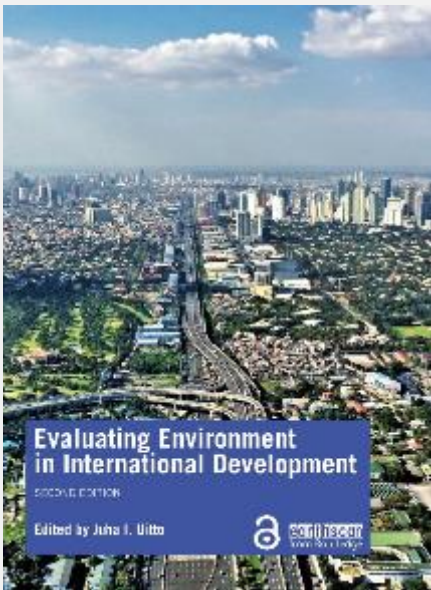


Variable costs

**Innovation – a
dynamic learning
process**



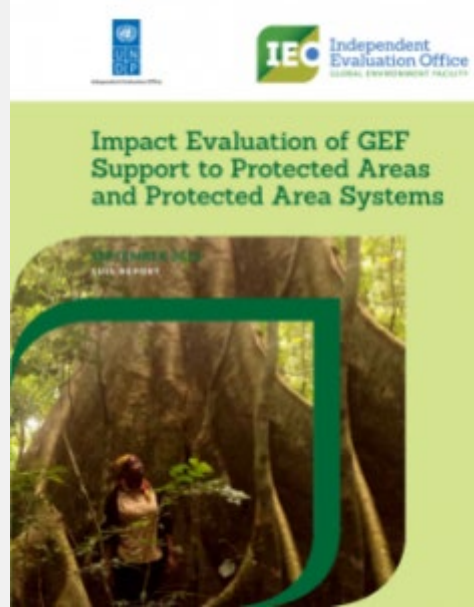
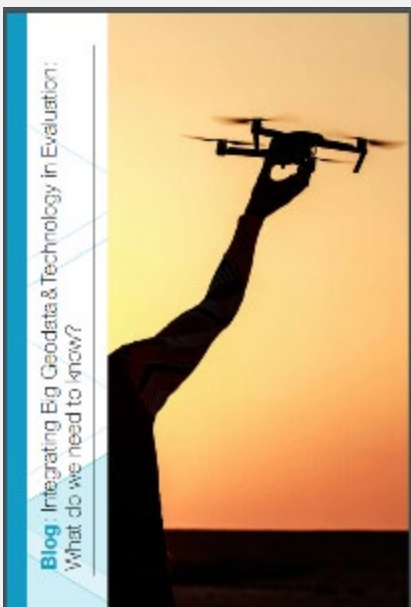
Resources and References



Anand and Batra, 2021. Using big data and geospatial approaches in evaluating environmental interventions. In Uitto, Evaluating Environment in International Development

A Anand, DH Kim, 2021. Pandemic Induced Changes in Economic Activity around African Protected Areas Captured through Night-Time Light Data. Remote Sensing 13 (2), 314

A Thieme, E Glennie, P Oddo, S McCartney, M Ruid, A Anand, 2020. Application of Remote Sensing for Ex ante Decision Support and Evaluating Impact. AJE



Runfola, G Batra, A Anand, A Way, S Goodman, 2020. Exploring the Socioeconomic Co-benefits of Global Environment Facility Projects in Uganda Using a Quasi-Experimental Geospatial Interpolation (QGI) Approach. Sustainability 12 (8), 3225

M Lech, JI Uitto, S Harten, G Batra, A Anand, 2018. Improving international development evaluation through geospatial data and analysis. International Journal of Geospatial and Environmental Research 5 (2), 3

A photograph showing soldiers in camouflage uniforms on the deck of a ship. In the foreground, two people are seen from behind, wearing green life vests. The scene is set on a ship's deck with various equipment and structures visible.

Thank you

aanand2@thegef.org