

GEF SUPPORT

PROGRESS TOWARDS IMPACT



Evaluation Approach

- Develop a list of areas of impact to be evaluated
- Develop a list of indicators to measure impact
- Develop a list of data sources to collect data
- Develop a list of methods to collect data
- Develop a list of tools to analyze data
- Develop a list of reports to present findings

GEF Partnership

RECOMMENDATION 1 & 5

GEF support should more fully draw on the GEF partnership to mainstream transboundary concerns within countries and existing regional organizations.

A more robust programmatic approach should be developed for GEF IW support to the SCS and adjacent areas.

Transboundary Initiatives

RECOMMENDATION 2

GEF should give more attention to supporting countries to work together to address concerns related to regional environmental goods and services.



Conclusion Two

More focus on transboundary concerns in international waters

Regional Mechanisms

RECOMMENDATION 3

GEF should more clearly define the role and linkages of regional mechanisms in the context of its broader regional strategy, and ensure country and donor commitments to increasing levels of cofinancing to cover the full costs of regional services by the end of the next phase of support.



Monitoring for Impact

RECOMMENDATION 6 & 7

Impact monitoring and related reporting systems supported by GEF should be consistent with local capacities and priorities. They should also be flexible to accommodate the more user-friendly and affordable technologies that are rapidly emerging.

Impact M&E data and information should be made available to the GEF Evaluation Office in a timely and transparent manner.

Conclusion Four

Greater adoption of GEF supported solutions in international waters and adjacent areas



Impact Evaluation of GEF Support to the South China Sea and Adjacent Areas

Selected Conclusions and Recommendations

Aaron Zazueta

Chief Evaluation Officer

14 November 2012
Washington, DC





How has GEF contributed to impact in international waters concerns in the South China Sea?

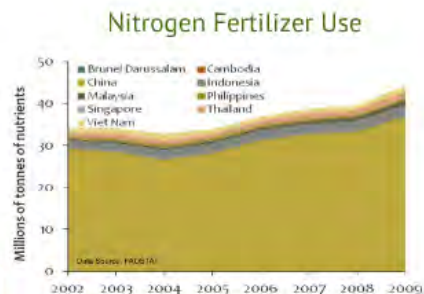


Evaluation Approach

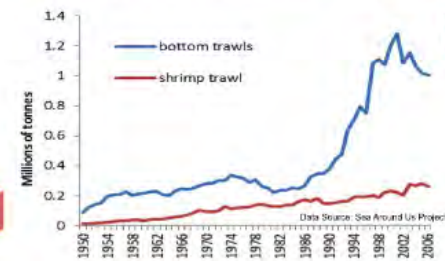
- **Triangulation of sources**
 - almost 400 persons interviewed
 - stakeholder participation through Reference Group
 - interdisciplinary team
- **Field verification**
 - in-depth case studies of 4 countries and visit to 1 more
 - visits to 26 sites and verification of 3 more
- **Counterfactual analysis**
 - discounting of rival hypotheses
 - use of both conventional and complex systems tools
- **Analysis of Context**

Environmental

Pressures



Shrimp and Bottom Trawl Landings

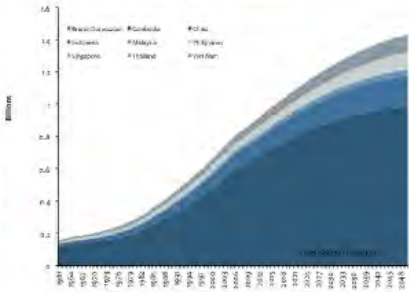


are increasing.

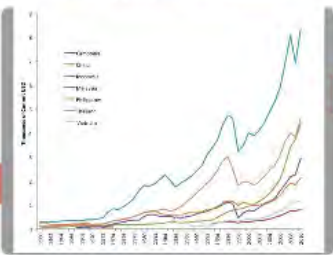
Economic

Drivers

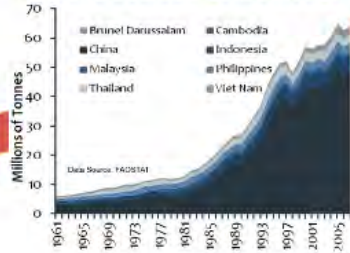
Urban Population



GDP Per Capita Income



Fish and Seafood Consumption

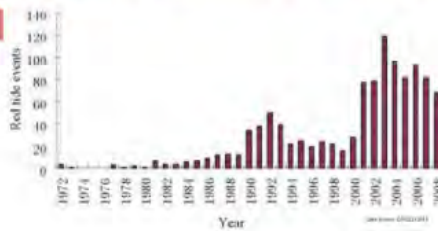


are increasing.

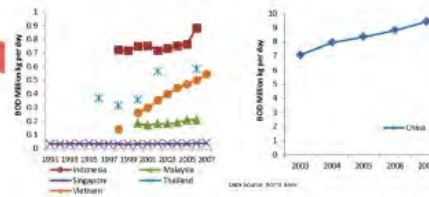
Ecological

States

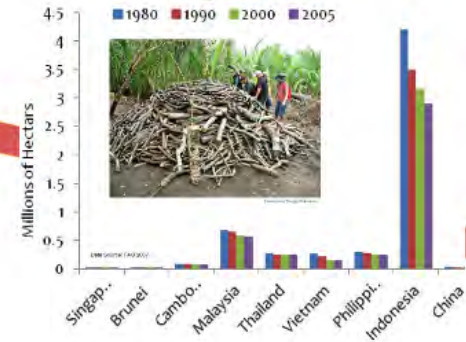
Number of Red Tide Events in Southern China



Biological Oxygen Demand



Mangrove Cover



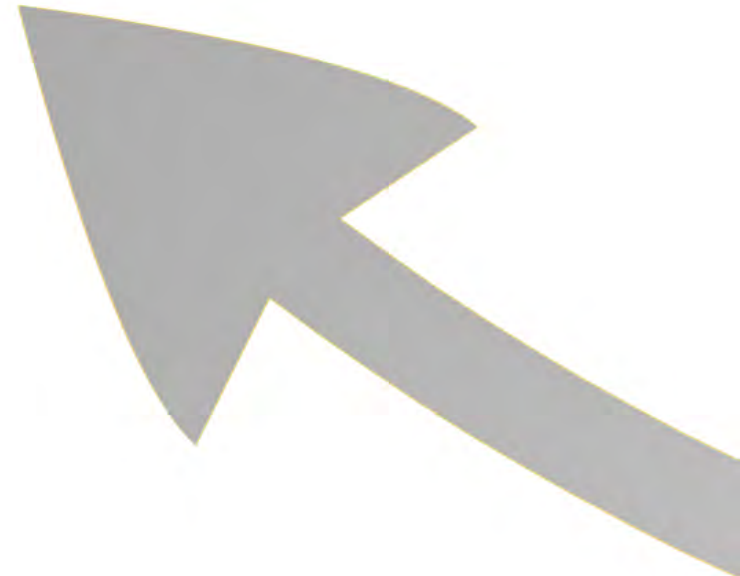
are degrading.

Human

Welfare



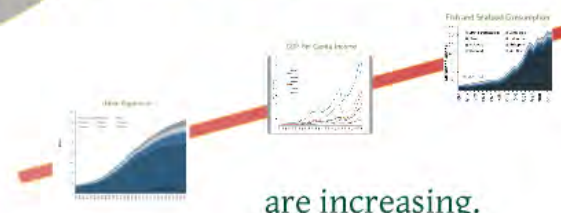
Photo by Jeneen R. Garcia



is at risk.

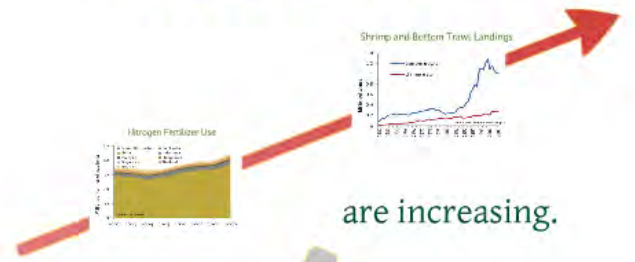
Drivers

Economic



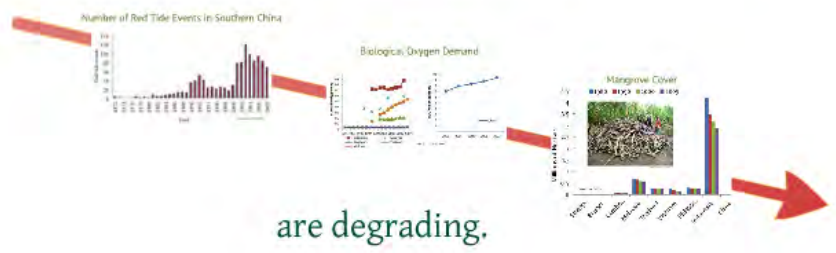
Environmental

Pressures



Ecological

States



Response

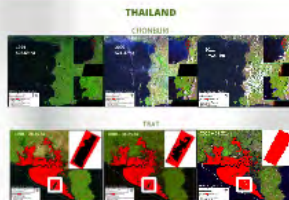
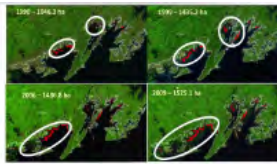


Human

Welfare



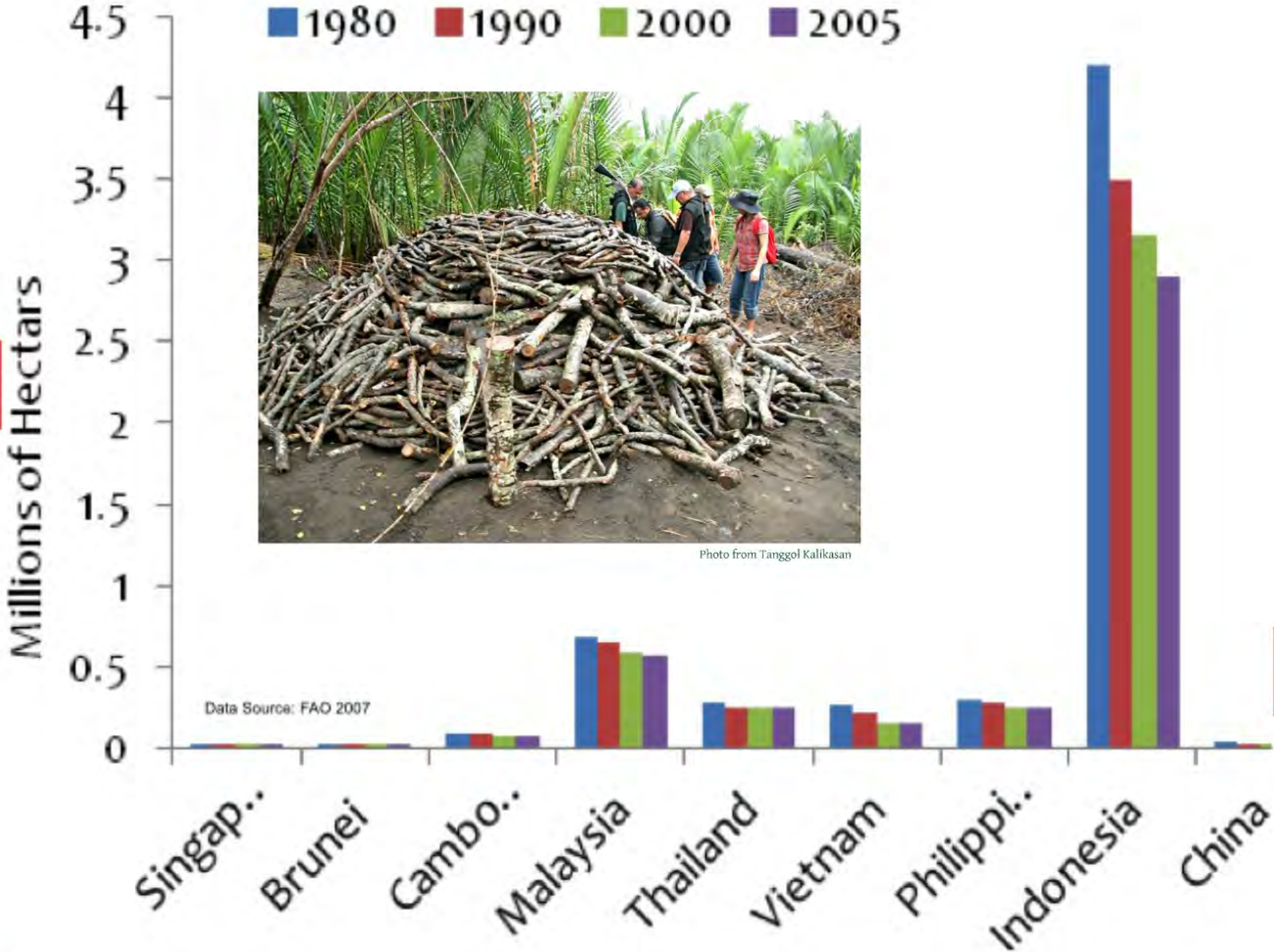
is at risk.



Conclusion One

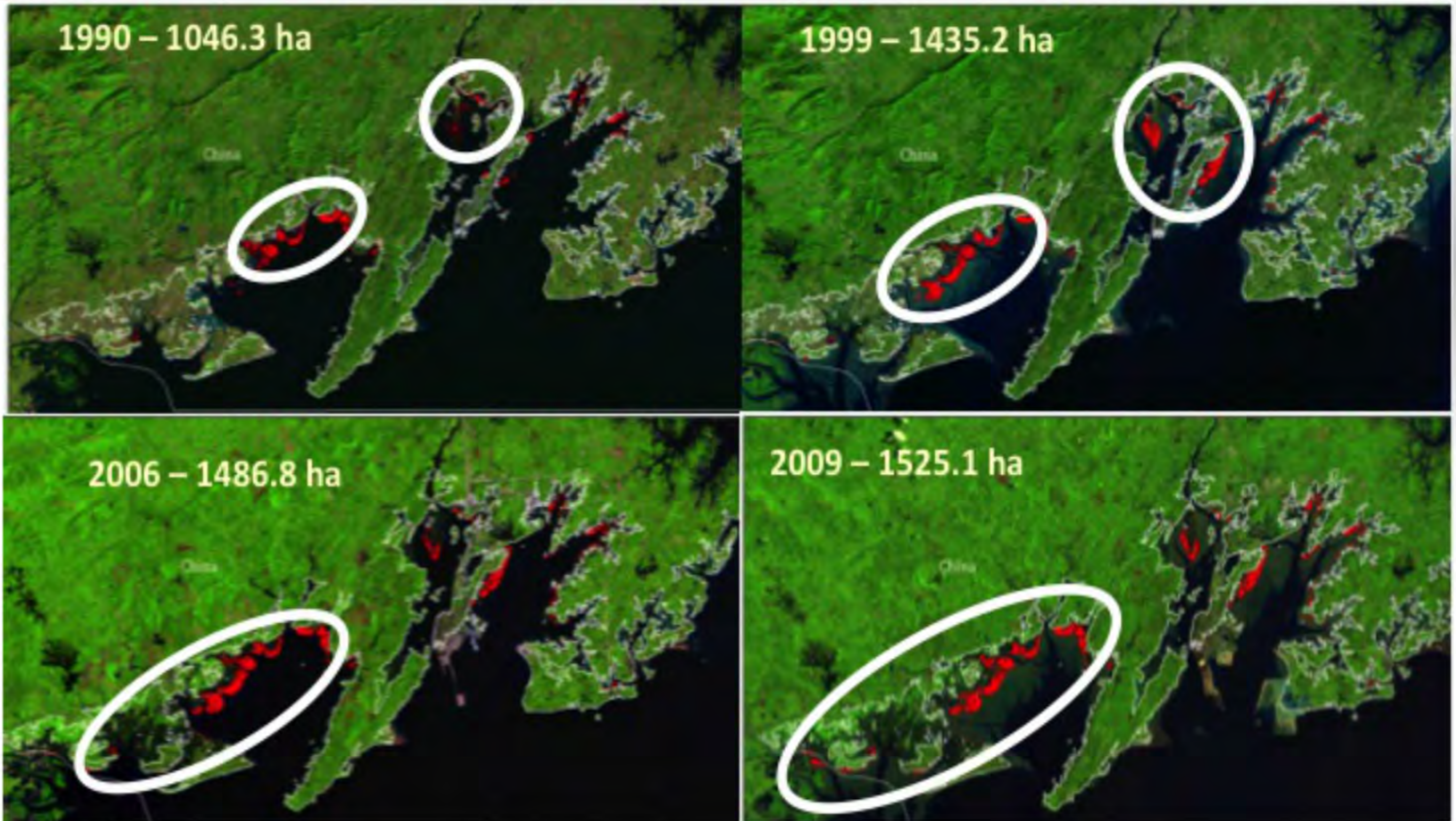
Although environmental pressures in the SCS **continue to increase**, GEF has made **important contributions** that are relevant to addressing regional transboundary issues.

Mangrove Cover



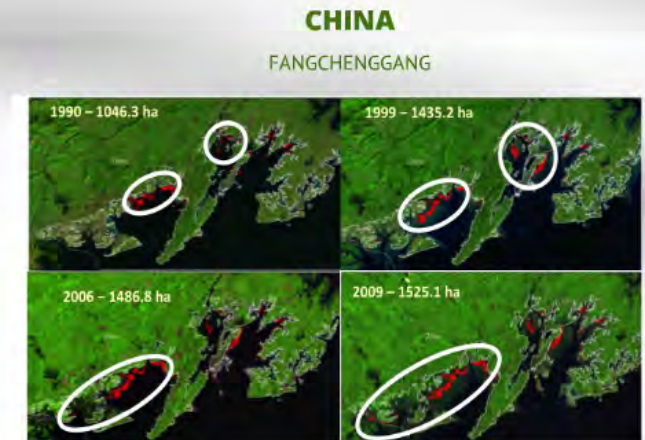
CHINA

FANGCHENGGANG

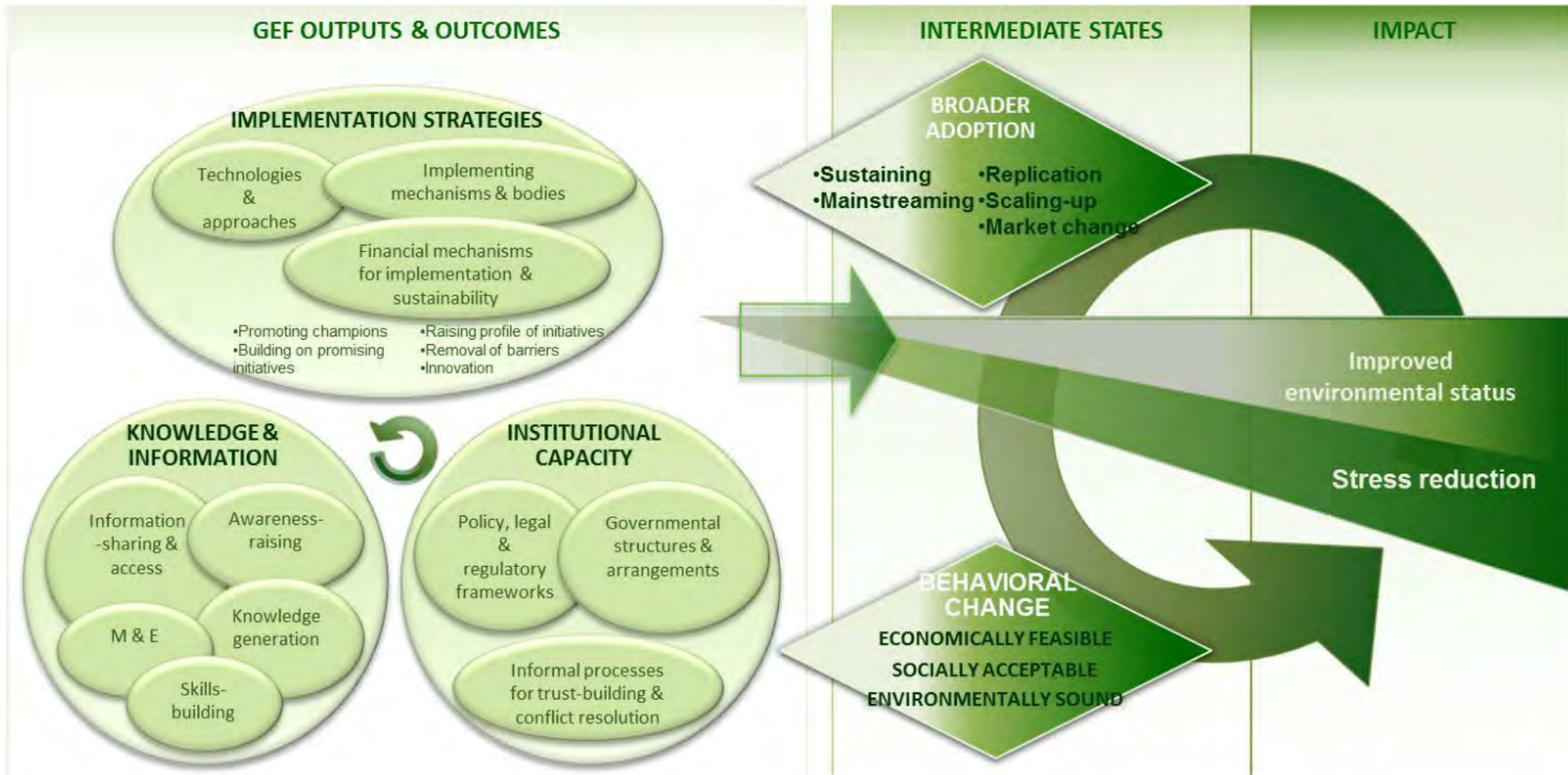


Methodological Challenges

- Contribution vs. attribution
 - multiples actors and initiatives over a long period of time
- Non-linear causal pathways
 - interactions between complex social and ecological systems across multiple scales



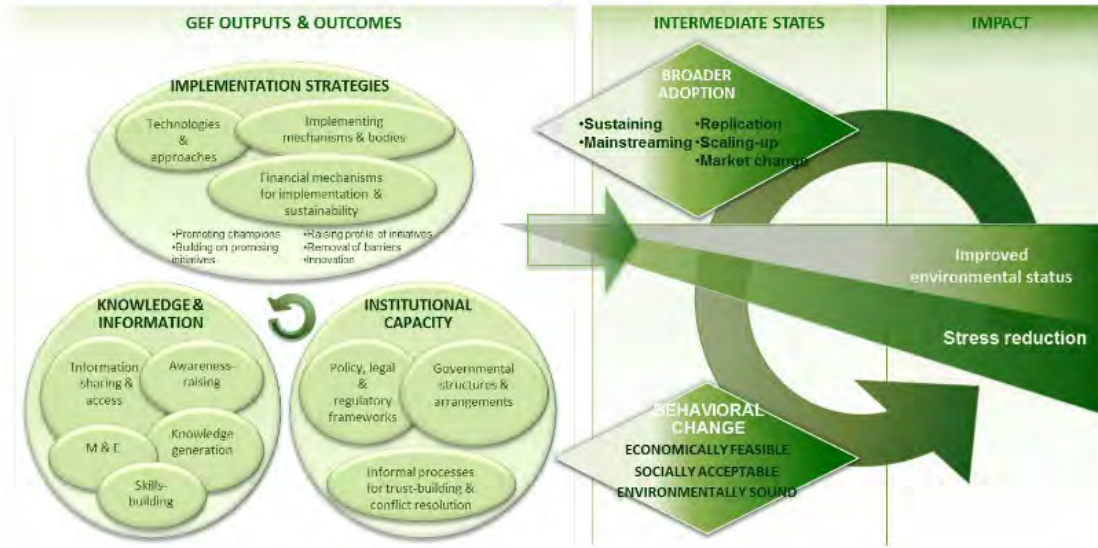
GEF Theory of Change



Contributing Factors

- Existing government initiatives
- Global conventions and processes
- Trend towards decentralization
- Other donors

GEF Theory of Change



- Low government priority for environmental initiatives
- Increasing large-scale economic drivers
- Reluctance to engage in initiatives involving ecosystems in disputed areas

Hindering Factors

Contributing Factors

- Existing government initiatives
- Global conventions and processes
- Trend towards decentralization
- Other donors



Hindering Factors

- Low government priority for environmental initiatives
- Increasing large-scale economic drivers
- Reluctance to engage in initiatives involving ecosystems in disputed areas

Conclusion Two

GEF links initiatives at multiple scales to address regional environmental priorities

[GEF'S NICHE]

Conclusion Two

GEF links initiatives at multiple scales to address regional environmental priorities

GEF'S NICHE

REGIONAL

- largest funder of regional coastal and marine initiatives
- innovative approaches to build on existing initiatives
- facilitation of trust and collaboration among stakeholders
- means for long-standing regional actors to expand their mandates on regional coastal and marine concerns
- channel for other donors and stakeholders to support regional transboundary concerns

CONSTRAINT

Conclusion Four^d

- Differences in extent of country support for environmental multilateral mechanisms
- Heavy dependence of regional environmental mechanisms on donor funding, including GEF support

CONSTRAINT

Conclusion Four^c

Reluctance of countries to support initiatives addressing regional transboundary environmental concerns and global environmental benefits



NATIONAL

- support to country efforts to fulfill commitments to global conventions and regional priorities through contributions to
 - knowledge generation
 - information-sharing
 - policy and legislation
 - administrative structures

LOCAL


- awareness-raising and skills-building contributing to
 - behavioral change
 - more environmentally sound legislation
 - improved law enforcement and compliance
- stress reduction through demonstrations of
 - technologies and approaches
 - multistakeholder bodies
 - financial mechanisms

Conclusion Three



In 21 of 26 cases where comparative data could be obtained, GEF has supported activities that reduced environmental stress and, as a result, also improved environmental health and economic conditions.

REGIONAL

- largest funder of regional coastal and marine initiatives
- innovative approaches to build on existing initiatives
- facilitation of trust and collaboration among stakeholders
- means for long-standing regional actors to expand their mandates on regional coastal and marine concerns
- channel for other donors and stakeholders to support regional transboundary concerns 

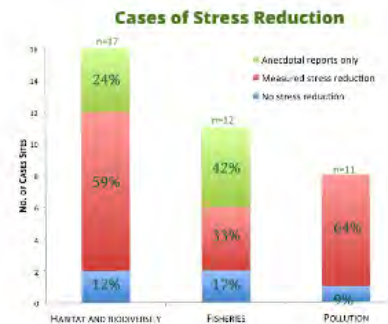
NATIONAL

- support to country efforts to fulfill commitments to global conventions and regional priorities through contributions to
 - knowledge generation
 - information-sharing
 - policy and legislation
 - administrative structures

LOCAL

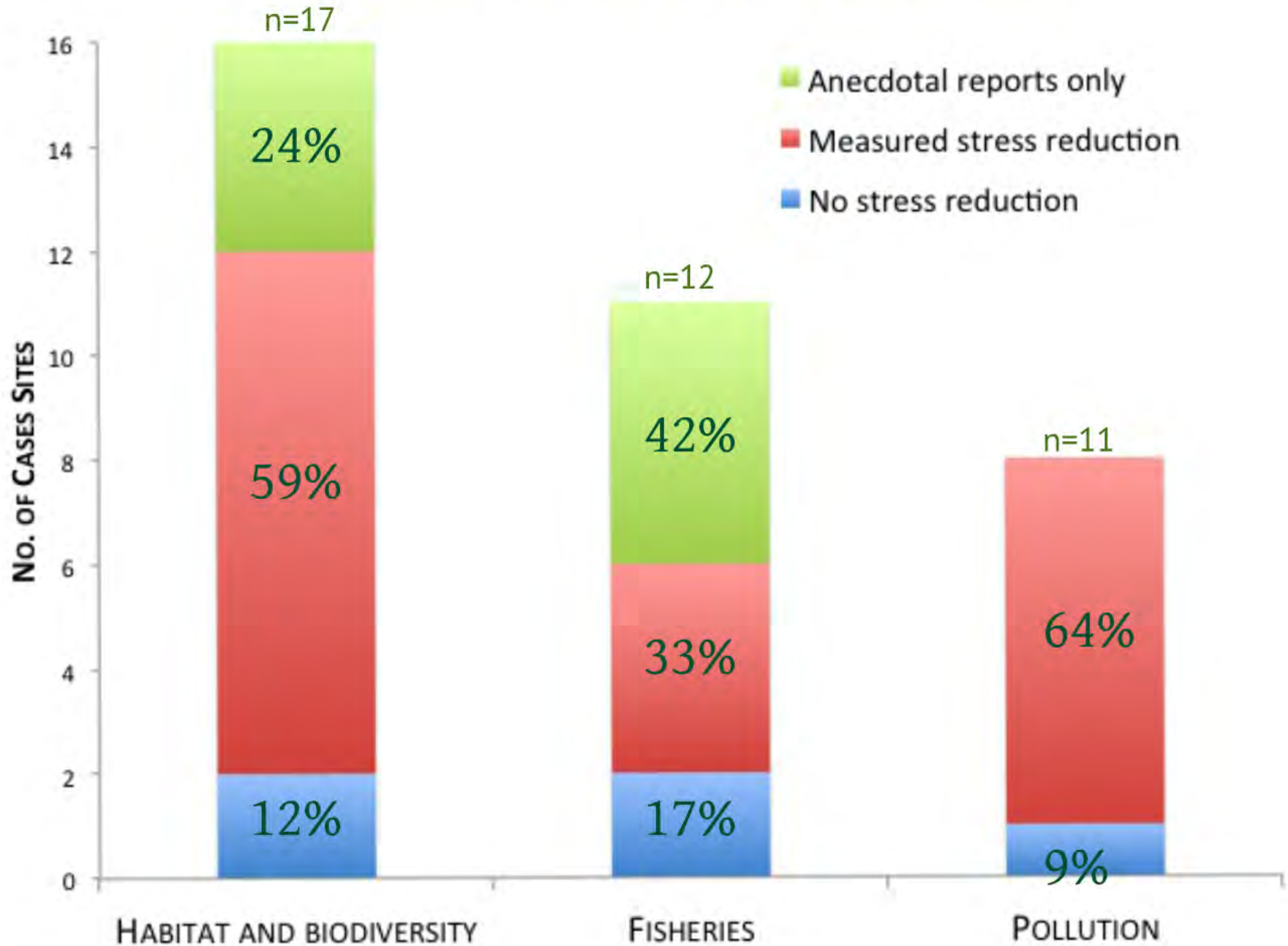
- awareness-raising and skills-building contributing to
 - behavioral change
 - more environmentally sound legislation
 - improved law enforcement and compliance
- stress reduction through demonstrations of
 - technologies and approaches
 - multistakeholder bodies
 - financial mechanisms

Conclusion Three



In 21 of 26 cases where comparative data could be obtained, GEF has supported initiatives that **reduced environmental stress** and, as a result, also **improved or maintained socioeconomic conditions**.

Cases of Stress Reduction



Conclusion Five

- In 19 out of 32 cases, monitoring data was **not available** either publicly or during field visits
- In 12 out of 20 sites, monitoring data is **not being used** for management and accountability
- Supported information & communication technology systems are **not always appropriate** to local conditions

CASES OF IMPACT MONITORING & REPORTING



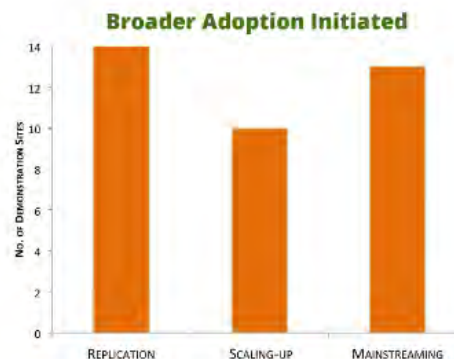
RECOMMENDATION ⁶ & ⁷

Impact monitoring and related reporting systems supported by GEF should be consistent with local capacities and priorities. They should also be flexible to accommodate the more user-friendly and affordable technologies that are rapidly emerging.

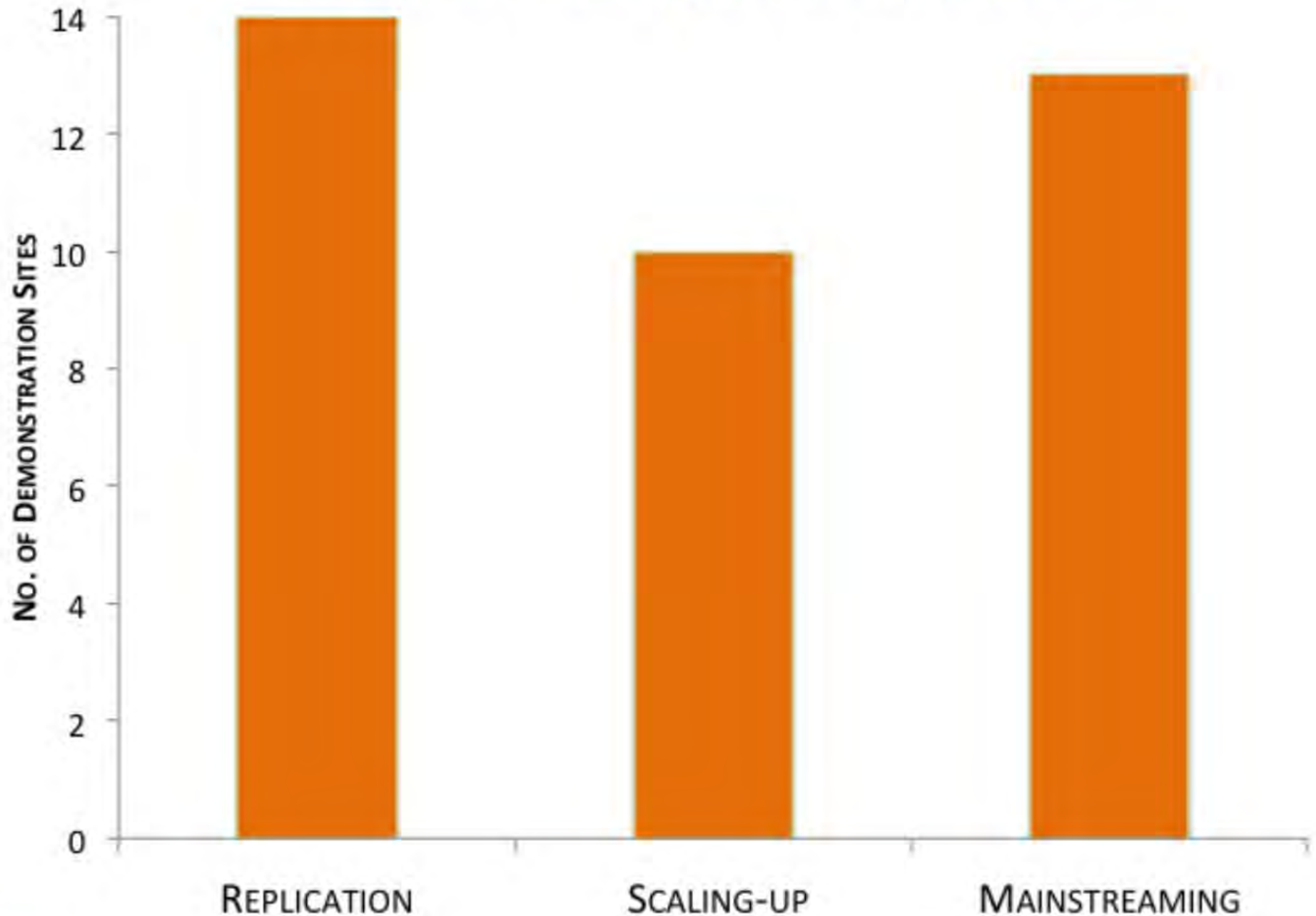
Impact M&E data and information should be made available to the GEF Evaluation Office in a timely and transparent manner.

Conclusion Four

Broader adoption of GEF-supported initiatives is **taking place**, and is critical to fully addressing environmental pressures at the appropriate scales, but **faces constraints** to further progress.



Broader Adoption Initiated



CONSTRAINT

Conclusion Four

a

Conditions for broader adoption not always present

Conditions Conducive to Broader Adoption

Location/ Demonstration Site	Readiness for adoption	Institutional capacity	Availability of financial resources	Appropriateness of policy framework
Xiamen + Jilong River Basin	High	High	High	High
Batangas Bay + entire Batangas Province	High	High	High	High
Danang + other coastal provinces in Vietnam	High	Low	Low	Low
Sriracha + other Chonburi municipalities	Low	Low	Low	High

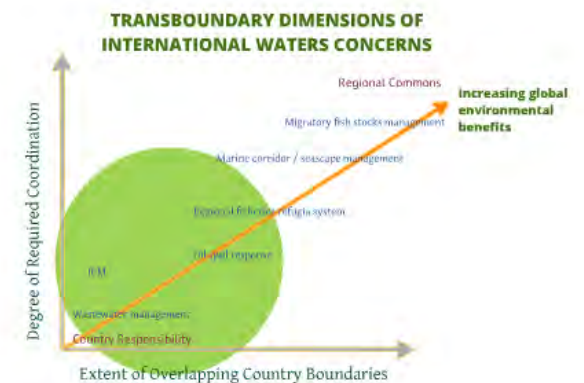
Conditions Conducive to Broader Adoption

Scaled-up Demonstration Site	Incentives for adoption	Institutional capacities	Availability of financial resources	Appropriateness of policy framework
Xiamen + Jiulong River Basin	High	High	High	High
Batangas Bay + entire Batangas Province	High	High	High	High
Danang + other coastal provinces in Vietnam	High	Low	Low	Low
Sriracha + other Chonburi municipalities	Low	Low	Low	High

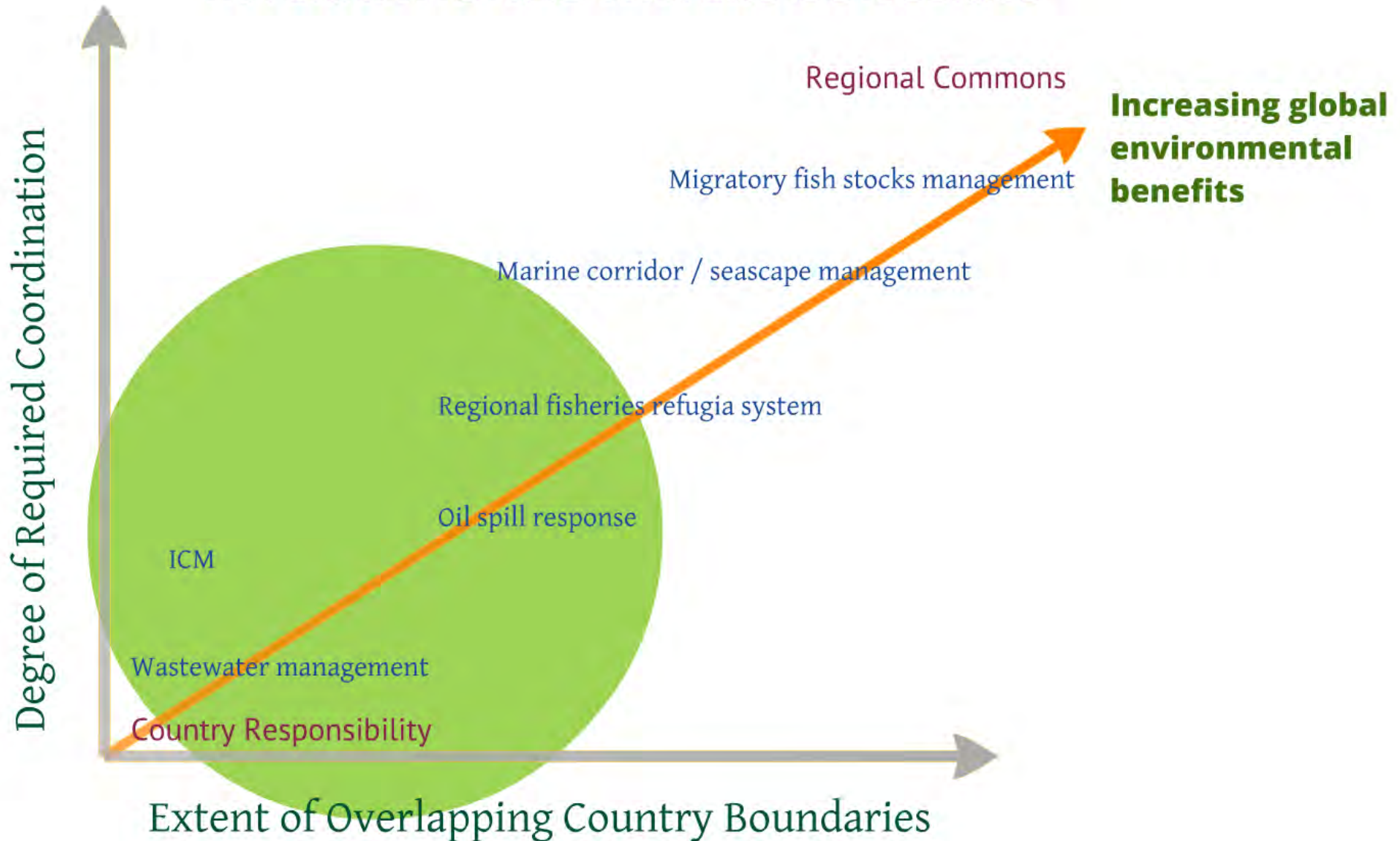
CONSTRAINT

Conclusion Four

Reluctance of countries to support initiatives addressing regional transboundary environmental concerns and global environmental benefits



TRANSBOUNDARY DIMENSIONS OF INTERNATIONAL WATERS CONCERNS



RECOMMENDATION

2

GEF should give more attention to supporting countries to work together to address concerns related to **regional environmental goods and services.**

CONSTRAINT

Conclusion Four

- Differences in **extent of country support** for environmental multilateral mechanisms
- Heavy dependence of regional environmental mechanisms on **donor funding**, including GEF support

RECOMMENDATION

3

GEF should more clearly define the role and linkages of regional mechanism/s in the context of its broader regional strategy, and ensure country and donor commitments to increasing levels of cofinancing to cover the **full costs of regional**

services

by the end of the next phase of support.

CONSTRAINT

Conclusion Four

e

Low coordination and insufficient management of internal risks within the GEF partnership

- **distinctive competencies** within the GEF partnership have not been fully drawn on to implement complementary initiatives and to mainstream transboundary environmental concerns
- even where a **strategic partnership** exists, coordination between initiatives has been low
- **low incentives** to coordinate and equal standing among agencies have led to low coordination

GEF Partnership

RECOMMENDATION



GEF support should more fully draw on the GEF partnership to **mainstream transboundary concerns** within countries and existing regional organizations.

A **more robust programmatic approach** should be developed for GEF IW support to the SCS and adjacent areas.

RECOMMENDED COUNCIL DECISIONS

The Council requests the Secretariat to:

1) Take into account the findings and recommendations of this evaluation when screening future proposals submitted for GEF funding in the South China Sea and adjacent areas, most notably:

- when choosing areas for expansion, that the conditions conducive to broader adoption are present in those areas
- that the distinctive competencies within the GEF partnership are more fully drawn on to mainstream transboundary environmental concerns among sectorial ministries and regional trade organizations
- that systems for managing risks and trade-offs are specified
- that more attention is given to the support of actions that address regional environmental goods and services
- that cash and in-kind cofinancing for regional services provided by GEF projects reach sustainable levels by project end
- that adequate coordination and management of risks within the GEF partnership be given attention.

2) Adopt a more robust tracking and reporting approach to ensure Agency accountability for collaboration and cooperation in the South China Sea and the East Asian Seas.

3) Take into account the findings and recommendations of this evaluation when developing the GEF 6 International Waters Strategies.



The Council requests the GEF Agencies to:

- 4) Ensure that M&E systems for environmental and socioeconomic impact are in place and consistently implemented, and that data is used and reported for management and public accountability; and
- 5) Ensure that M&E data and information on the impact of GEF projects be made available to the GEF Evaluation Office in a timely and transparent manner when requested.

The Council requests the Secretariat to:

1) Take into account the findings and recommendations of this evaluation when screening future proposals submitted for GEF funding in the South China Sea and adjacent areas, most notably:

- when choosing areas for expansion, that the conditions conducive to broader adoption are present in those areas
- that the distinctive competencies within the GEF partnership are more fully drawn on to mainstream transboundary environmental concerns among sectorial ministries and regional trade organizations
- that systems for managing risks and trade-offs are specified
- that more attention is given to the support of actions that address regional environmental goods and services
- that cash and in-kind cofinancing for regional services provided by GEF projects reach sustainable levels by project end
- that adequate coordination and management of risks within the GEF partnership be given attention.

2) Adopt a more robust tracking and reporting approach to ensure Agency accountability for collaboration and cooperation in the South China Sea and the East Asian Seas.

3) Take into account the findings and recommendations of this evaluation when developing the GEF 6 International Waters Strategies.

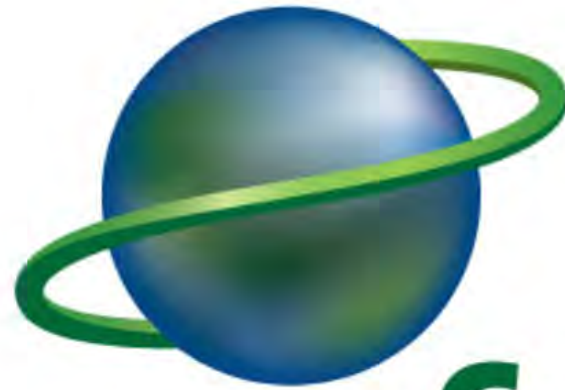


The Council requests the GEF Agencies to:

4) Ensure that M&E systems for environmental and socioeconomic impact are in place and consistently implemented, and that data is used and reported for management and public accountability; and

5) Ensure that M&E data and information on the impact of GEF projects be made available to the GEF Evaluation Office in a timely and transparent manner when requested.





gef

GLOBAL ENVIRONMENT FACILITY
INVESTING IN OUR PLANET

GEF SUPPORT

PROGRESS TOWARDS IMPACT



Evaluation Approach

- Develop a list of areas of impact to be evaluated
- Develop a list of indicators to be used to measure impact
- Develop a list of data sources to be used to measure impact
- Develop a list of data collection methods to be used to measure impact
- Develop a list of data analysis methods to be used to measure impact
- Develop a list of data reporting methods to be used to measure impact

GEF Partnership

RECOMMENDATION 1 & 5

GEF support should more fully draw on the GEF partnership to mainstream transboundary concerns within countries and existing regional organizations.

A more robust programmatic approach should be developed for GEF IW support to the SCS and adjacent areas.

Transboundary Initiatives

RECOMMENDATION 2

GEF should give more attention to supporting countries to work together to address concerns related to regional environmental goods and services.



Conclusion Two

More focus on transboundary concerns in international waters

Regional Mechanisms

RECOMMENDATION 3

GEF should more clearly define the role and linkages of regional mechanisms in the context of its broader regional strategy, and ensure country and donor commitments to increasing levels of cofinancing to cover the full costs of regional services by the end of the next phase of support.



Monitoring for Impact

RECOMMENDATION 6 & 7

Impact monitoring and related reporting systems supported by GEF should be consistent with local capacities and priorities. They should also be flexible to accommodate the more user-friendly and affordable technologies that are rapidly emerging.

Impact M&E data and information should be made available to the GEF Evaluation Office in a timely and transparent manner.

Conclusion Four

Greater adoption of GEF supported solutions in international waters and adjacent areas

