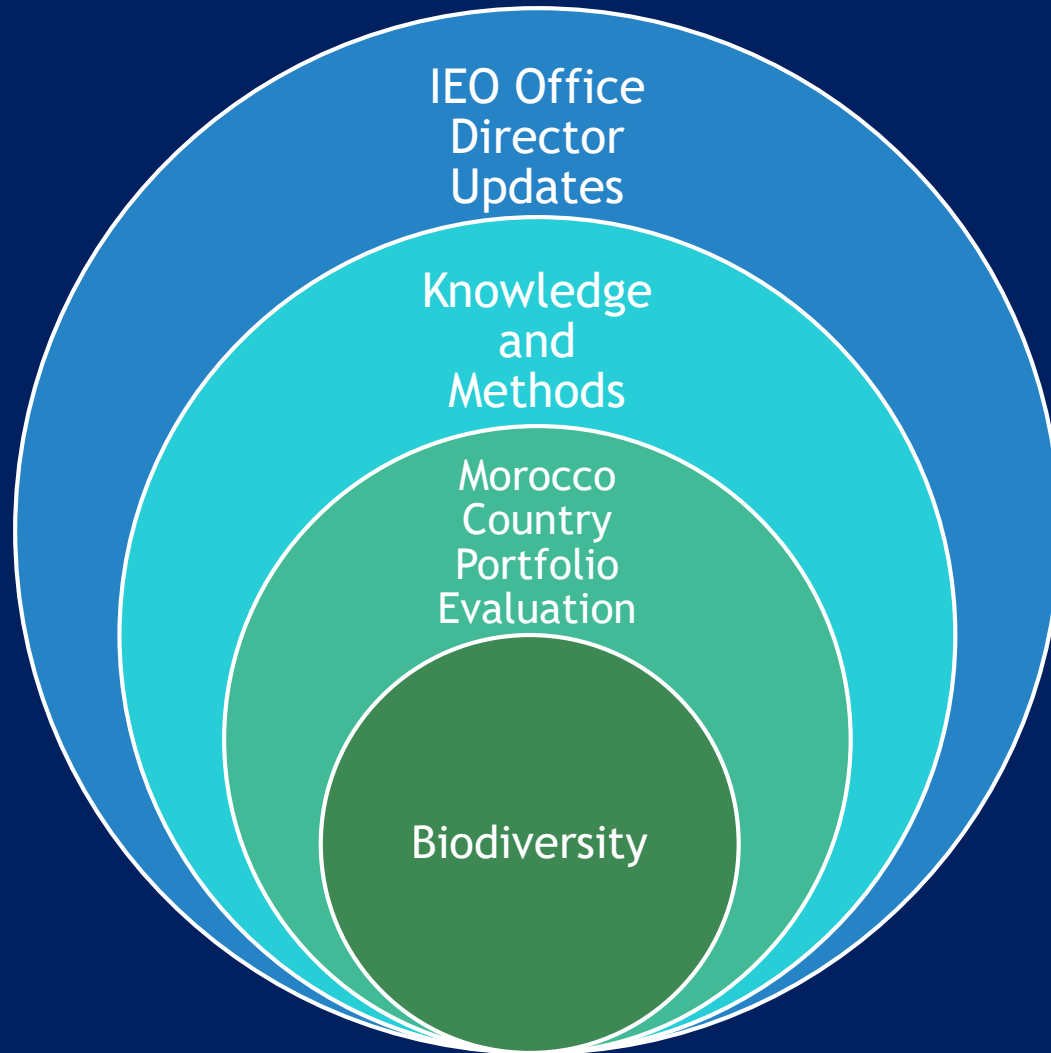


Semi-Annual Evaluation Report

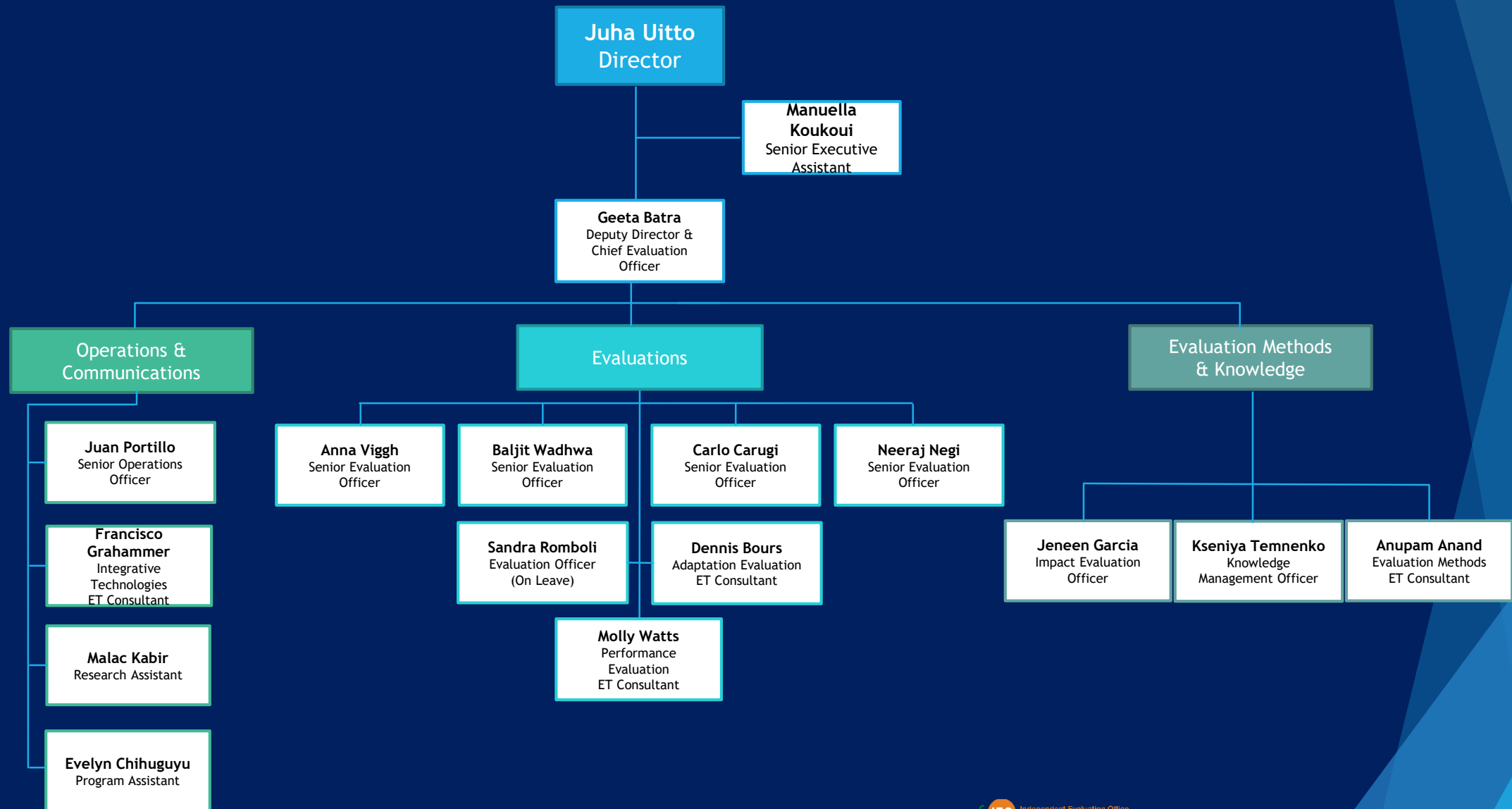
49th GEF Council Meetings

Juha Uitto
Director
October 21, 2015

Organization



The GEF IEO: Reorganized to Deliver Better



Progress

► Completed Evaluations & Studies

Joint Impact Evaluation of GEF Support to Protected Areas and Surrounding Landscapes

Morocco Country Portfolio Evaluation

Knowledge Needs Assessment

► Ongoing Evaluations (Completion by June 2016)

Annual Performance Report (2015)

CSO Network Evaluation

Tajikistan Country Portfolio Evaluation

LDCF/SCCF Evaluation

Policies & Guidelines

M&E Policy

- ▶ Gap Analysis based on Council Decisions
- ▶ Survey
- ▶ Key areas for Revisions to Policy Identified
 - ▶ Gender Mainstreaming
 - ▶ Environmental and Social Safeguards Standards
 - ▶ Climate Change Resilience
 - ▶ Results Based Management
 - ▶ Terminal Evaluation Guidelines
 - ▶ Knowledge Management

M&E Policy and Terminal Evaluation Guidelines will be updated by March 2016.

Building up towards OPS-6 (1)

Topic	APR	Programmatic Approaches	Multiple Benefits	Integrated Approaches	LDCF/SCCF	Country	SGP	Protected Areas	CSO	Accreditation
Multiple Benefits		●	●	●		●	●			
Drivers of Environmental Change		●		●		●		●		
Impact		●	●			●		●		
Gender	●	●	●	●	●	●	●		●	
Private Sector	●	●	●	●	●	●				
Resilience	●	●	●	●	●	●				
Building Capacity	●				●	●	●	●		●
Socio Economic		●	●	●	●	●	●	●		
Partnerships	●	●	●	●	●	●	●	●	●	●
Catalytic Effects		●	●			●	●	●		
Conventions		●	●		●	●		●		
Performance										

Building up towards OPS-6 (2)

Developing Approach Papers for

A. Evaluations

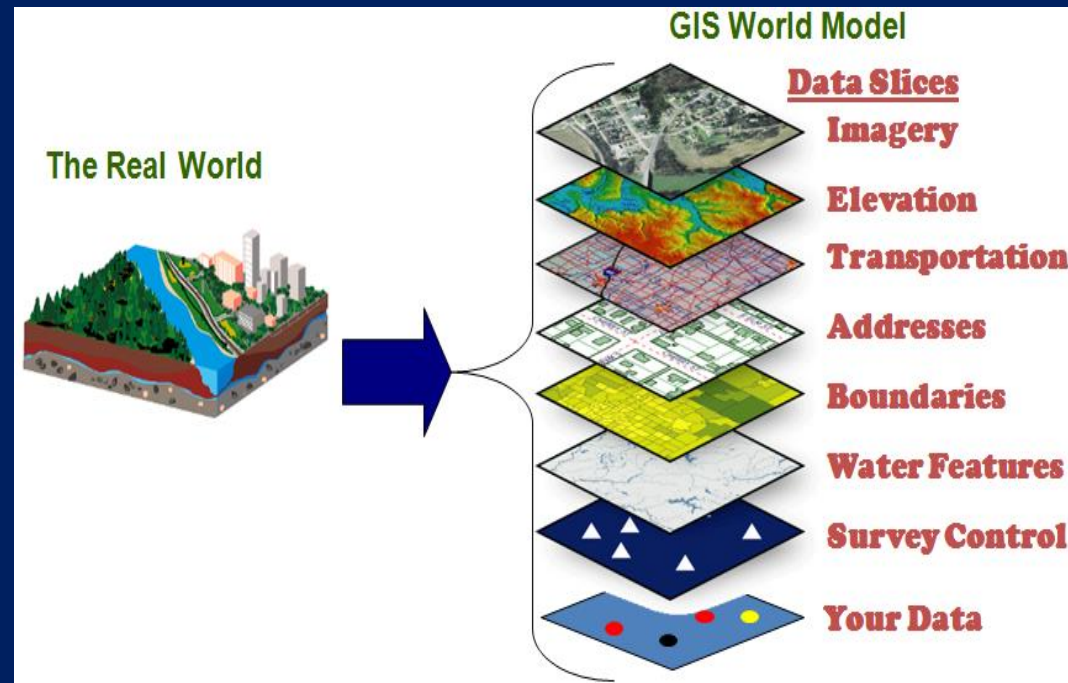
- ▶ Multiple Benefits
- ▶ Programmatic Approaches
- ▶ Strategic Country Evaluations
- ▶ Integrated Approaches
- ▶ APR 2016 (Thematic Focus on Gender)

B. Knowledge Management Products

Focal Area Lessons

Leading on Methodologies in Environmental Evaluation

- ▶ Quantitative & Qualitative Approaches
- ▶ Remote Sensing
- ▶ GIS
- ▶ Big Data Analytics
- ▶ Mainstreaming Gender, Stakeholder engagement



Mainstreaming Gender

- ▶ Gender Analysis during project preparation
- ▶ Incorporating gender responsive results frameworks
- ▶ Share of men and women as direct beneficiaries
- ▶ M&E reports incorporating gender
- ▶ Guidance issued for use in all evaluations



Knowledge Management Needs Assessment

- ▶ To understand use of IEO evaluations and assess knowledge needs and dissemination approaches to further increase the use and learning
- ▶ GEF IEO Evaluations and Products are used and appreciated for quality

Need to:

- ▶ Increase stakeholder engagement
- ▶ Develop synthesis products



Climate-Eval Review

- ▶ Strong relevance & outreach
- ▶ Increases knowledge
- ▶ Promotes learning
- ▶ Strengthens professional networks
- ▶ Promotes face-to-face learning
- ▶ Good opportunities for future
- ▶ Channel for Capacity Building in Developing Countries



Morocco Country Portfolio Evaluation (1997-2014)

The GEF committed \$128.5 million USD in 32 national projects



Relevance

- ▶ Aligned with GEF mandate
- ▶ Helped Morocco address international commitments
- ▶ Consistent with national priorities
- ▶ Country driven
- ▶ Supports South-South cooperation



GEF ID 3082 Safe Management and Disposal of PCBs, Pillar I



GEF ID 2275 Middle Atlas Forest Reforestation Project



GEF ID 1838 Energy and Environment Upgrading of the Industrial Park of Sidi Bernoussi

Effectiveness & Efficiency

Effectiveness:

- ▶ GEF contributed to enabling environment for solar energy, conservation of protected areas, prevention of deforestation, elimination of dangerous chemicals
- ▶ Broader adoption
- ▶ Knowledge generation and exchange (local & regional levels)
- ▶ Benefits to Women (SGP)

Efficiency

- ▶ Perceptions of long project cycle
- ▶ M&E Systems not fully implemented



GEF ID 409 Protected Areas Management



Joint Impact Evaluation of GEF Support to Protected Areas and Surrounding Landscapes



Main Objective

To assess the impact of GEF investments in non-marine protected areas and protected area systems on biodiversity conservation and sustainable use.

Evaluation Highlights



- ▶ Advanced Evaluation Methods and Data Sources
- ▶ Coverage at Global, National and Local levels
- ▶ Evidence that GEF is contributing to a slow down in the rate of degradation

Need for:

- ▶ Shifting monitoring approaches and data requirements
- ▶ More learning and knowledge sharing on what works

Recommended Council Decisions

- ▶ (1) Regarding the Joint Impact Evaluation of GEF Support to Protected Areas and Surrounding Landscapes.

The Council, having reviewed the section on the Joint Impact Evaluation of GEF Support to Protected Areas and Surrounding Landscapes, in the “Semi-Annual Evaluation Report of the GEF Independent Evaluation Office: October 2015,” and GEF/ME/C.49/02, “Management Response to the Semi-Annual Evaluation Report October 2015”, takes note of the conclusions of the evaluation and endorses the recommendations.

- ▶ (2) Regarding the Knowledge Management Needs Assessment and the Review of Climate-Eval.

The Council takes note of the findings of the GEF IEO Knowledge Management Needs Assessment and the Review of Climate-Eval

An aerial photograph of a coral reef. The top half of the image shows deep, dark blue water. The bottom half shows a shallow reef flat with a mix of light blue, green, and brown patches, indicating different types of coral and seabed. The text 'Thank you' is centered in the upper half of the image.

Thank you

gefevaluation@thegef.org
www.gefio.org