



Independent
Evaluation Office
GLOBAL ENVIRONMENT FACILITY

Sixth Comprehensive Evaluation of the GEF: Approach Paper

GEF 50th Council Meetings

June 8, 2016

GEF in the Changing Environment Finance Landscape

Objectives:

- Provide solid evaluative evidence to inform the negotiations for the seventh replenishment of the GEF.
- Build on the findings of OPS5
- Review the implementation of the recommendations in OPS5
- Assess progress on the elements of the GEF6 strategy



Thematic Focus

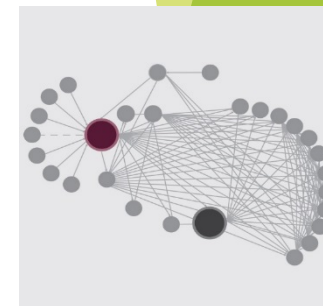
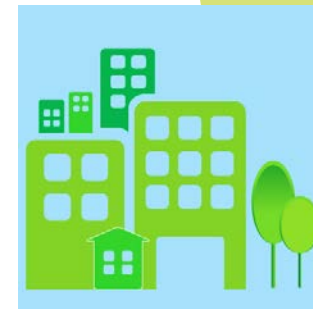
TWO THEMES:

- Relevance and Global Contribution of the GEF
- Performance and impact of the GEF



Relevance and the Global Contribution of the GEF

- Global relevance, GEF 6 Strategy and the focus on integrated program approaches
- Focal area strategy results and relevance to Conventions
- Governance of the GEF, donor performance and resource mobilization
- Health of the expanded partnership
- Engagement with the private sector and the Non Grant Instrument
- Attention to Civil Society Organizations, Indigenous People and Gender
- Results Based Management and Knowledge Management



Program Performance and Impact

- Progress Towards Impact
- Value for Money
- Catalytic and Innovative Role of the GEF
- Country ownership and driven-ness and GEF's role in contributing to policy and regulatory improvements in countries
- Addressing Drivers of Global Environmental Change
- Performance issues including quality at entry, co-financing, supervision
- Implementation and achievement of the focal areas of the GEF

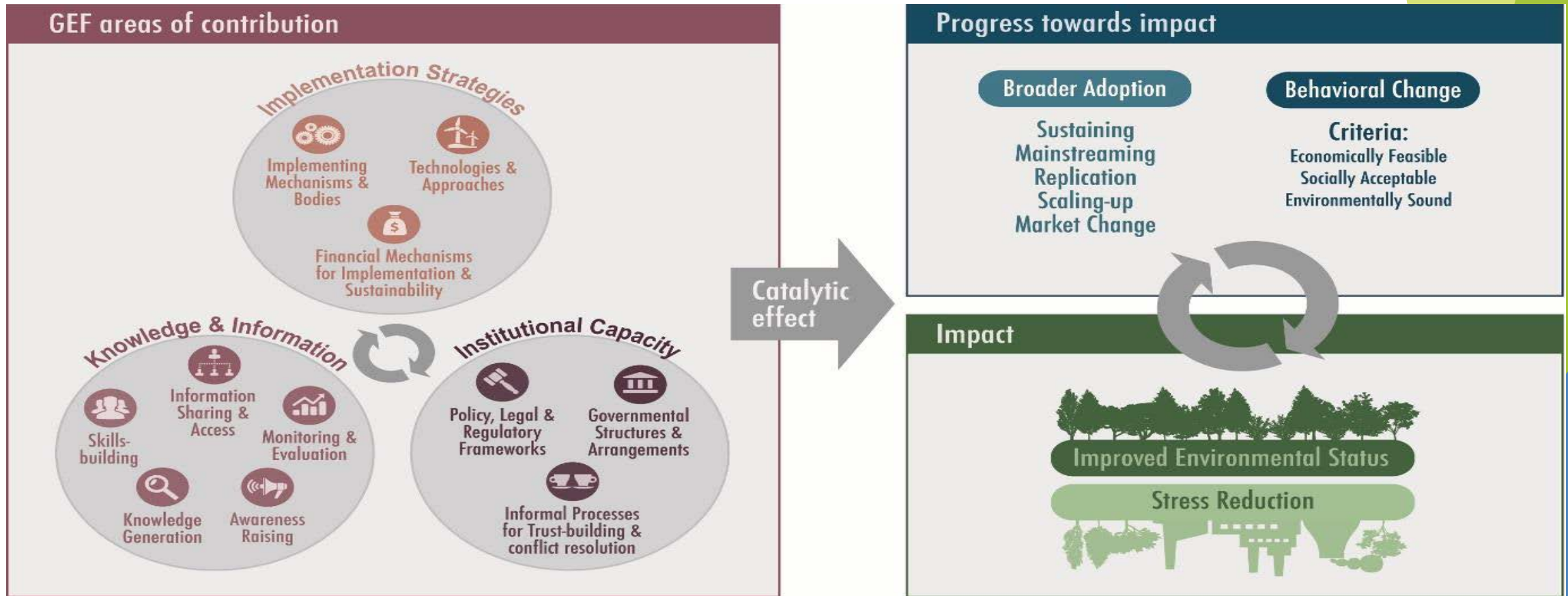


Spectrum of Methods and Data Sources

- Quantitative and Qualitative
- Literature and document reviews
- Portfolio analysis
- Structured and semi-structured interviews
- Surveys
- The use of GIS and remote sensing methods
- Rapid impact evaluations; Quasi experimental evaluations
- Stakeholder consultations and analysis
- Country and field visits
- Case studies



The Theory of Change



Quality Assurance: Process and Product

- External Quality Assurance Advisors to provide guidance and quality control at all stages - From Approach to Final Evaluation
 - Ms. Holly Dublin
 - Ms. Sunita Narain
 - Mr. Hans Bruyninckx
 - Mr. Osvaldo Feinstein
 - Mr. Kazuhiko Takemoto

Delivery Schedule

- Approach Paper | June 2016
- Preparation of Meta-Analysis | March 2017
- Preparation of Sub-Studies (Technical Reports) | June 2017
- Delivery of OPS6 Progress Report | June 2017
- Delivery of Synthesis Report | December 2017



Please let us hear from you!!!



Thank you!

For more information, visit www.gefieo.org