



Independent
Evaluation Office
GLOBAL ENVIRONMENT FACILITY

ENHANCING GLOBAL ENVIRONMENTAL BENEFITS THROUGH EXCELLENCE IN EVALUATION



Independent
Evaluation Office
GLOBAL ENVIRONMENT FACILITY



SEMI-ANNUAL EVALUATION REPORT

June 2018



OVERVIEW

1. Annual Performance Report 2018 and Sustainability
2. Ecological Forecasting using Geospatial Analysis: Kenya
3. Management Action Record
4. Evaluation Work in Progress
5. Budget for FY2019



SECTION ONE

ANNUAL PERFORMANCE REPORT 2018

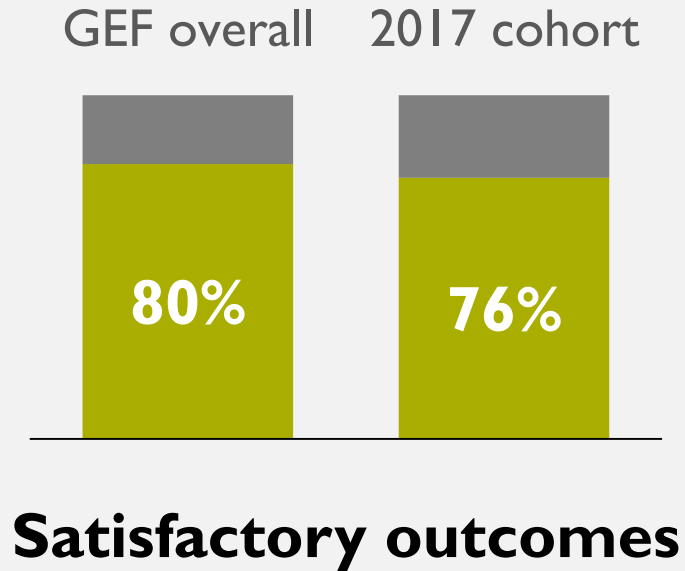
SPECIAL FOCUS ON SUSTAINABILITY





PERFORMANCE

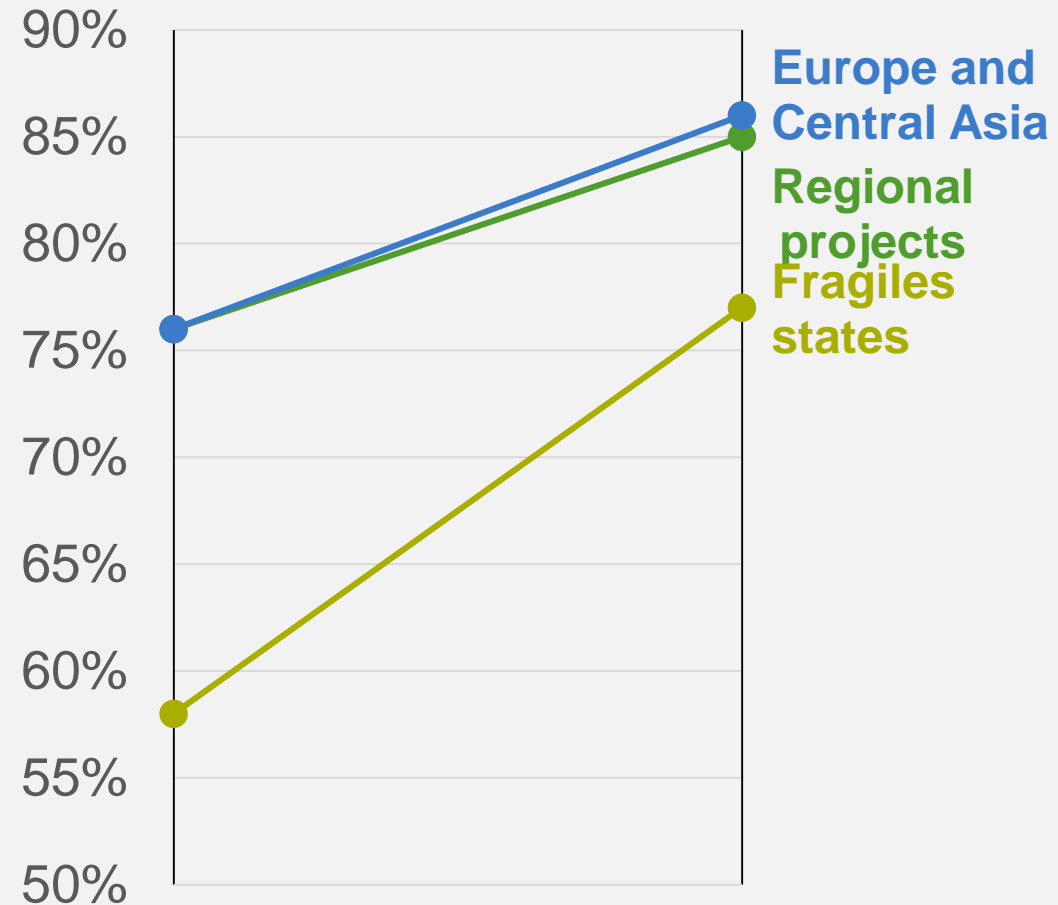
Outcomes



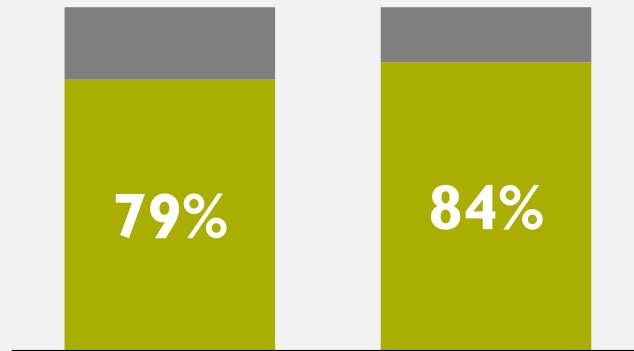
Projects with satisfactory outcomes

Pilot to
GEF-2

GEF-3
onwards



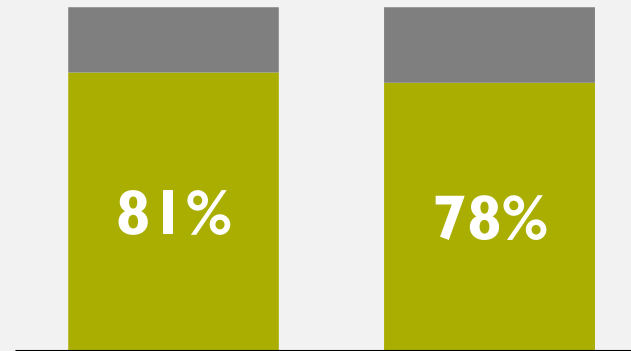
GEF overall 2017 cohort



Implementation

✓ Effective steering committee

GEF overall 2017 cohort



Execution

✓ Effective steering committee

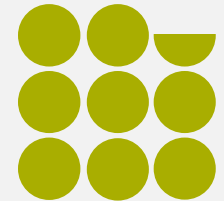
✓ Country support

GEF overall 2017 cohort

6.1:1



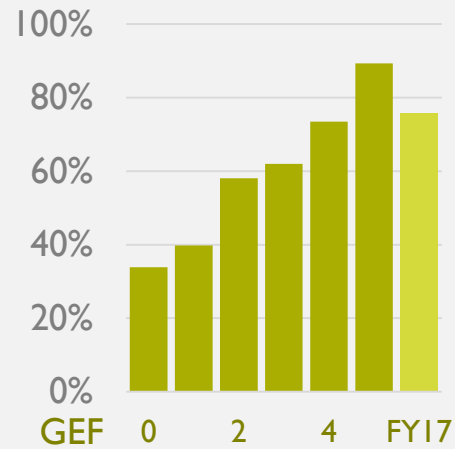
8.4:1



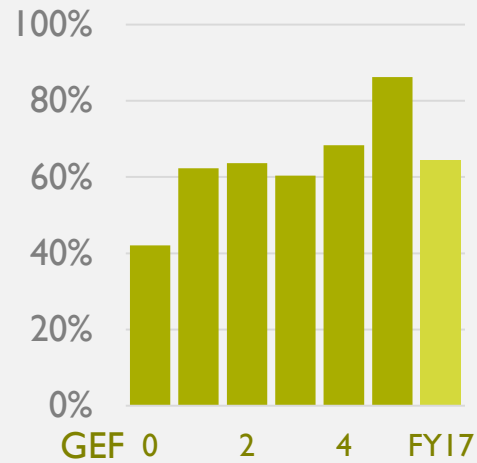
Cofinancing

✓ 100% or more expected cofinancing

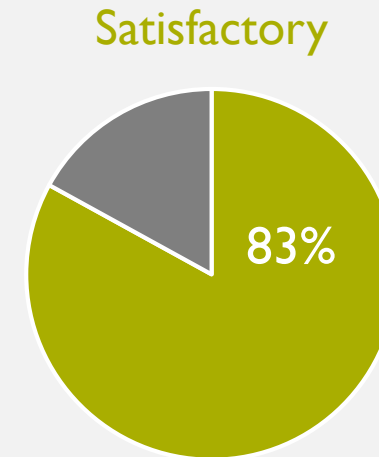
Monitoring and Evaluation



Design improved



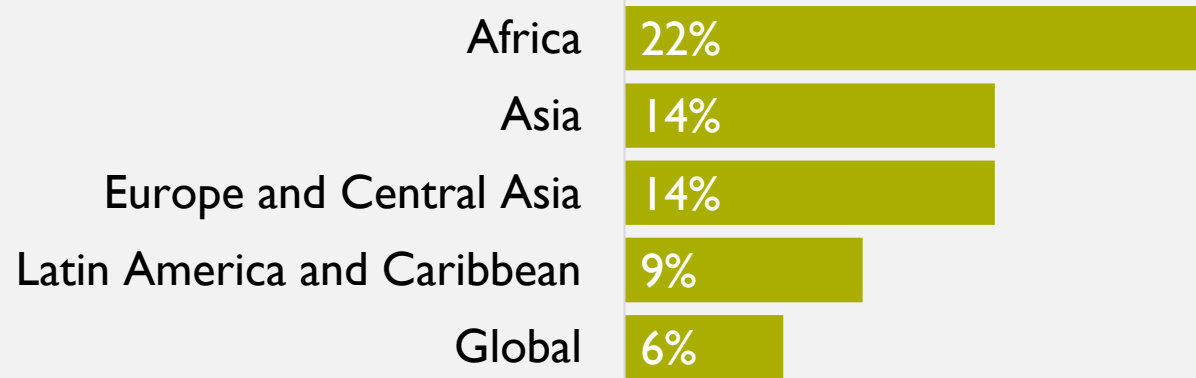
Implementation improved



Quality of terminal evaluations remains high but gaps in coverage

Gender M&E

Gender disaggregated data



Africa leads

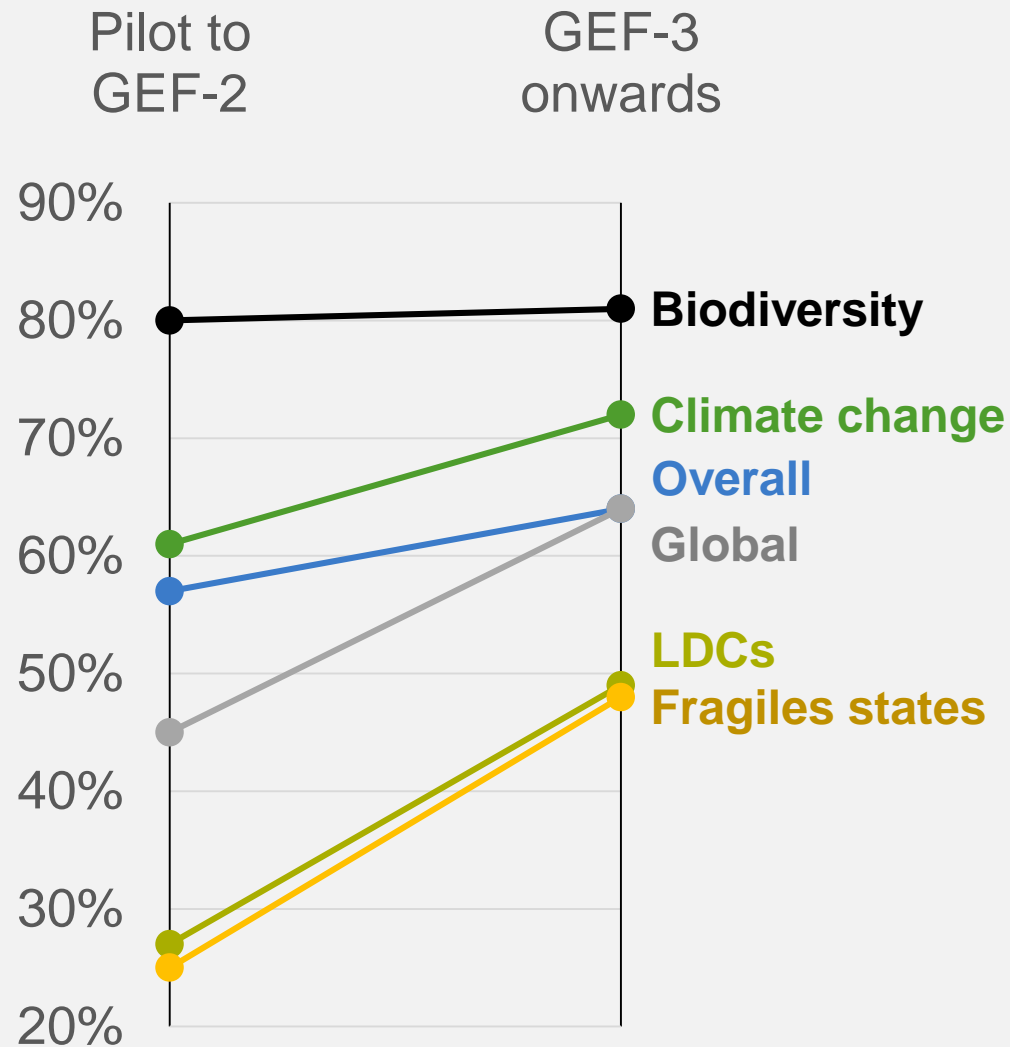


Improvements in gender reporting
in terminal evaluations and
project implementation reports



SUSTAINABILITY

At project completion (62%)

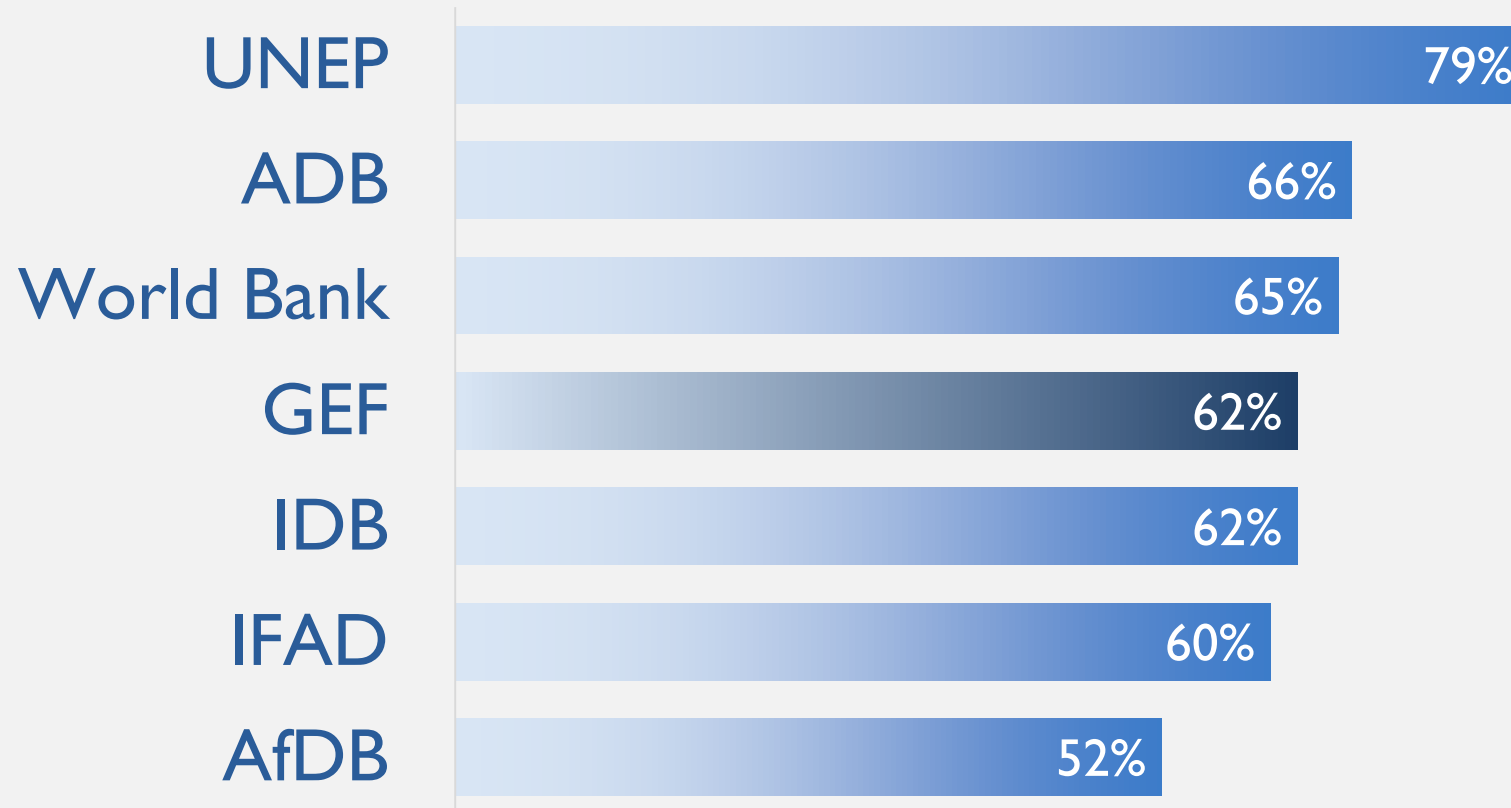


Factors

- ✓ Quality of project preparation
- ✓ Country context
- ✓ Government support
- ✓ Quality of implementation and execution
- ✓ Materialization of cofinancing

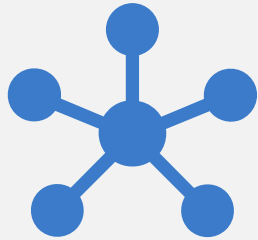
At project completion (62%)

Comparable multilateral organizations



Post project completion

Higher sustainability ratings at project completion
are associated with higher levels of



Broader adoption



Environmental
stress reduction



Post project
completion outcomes

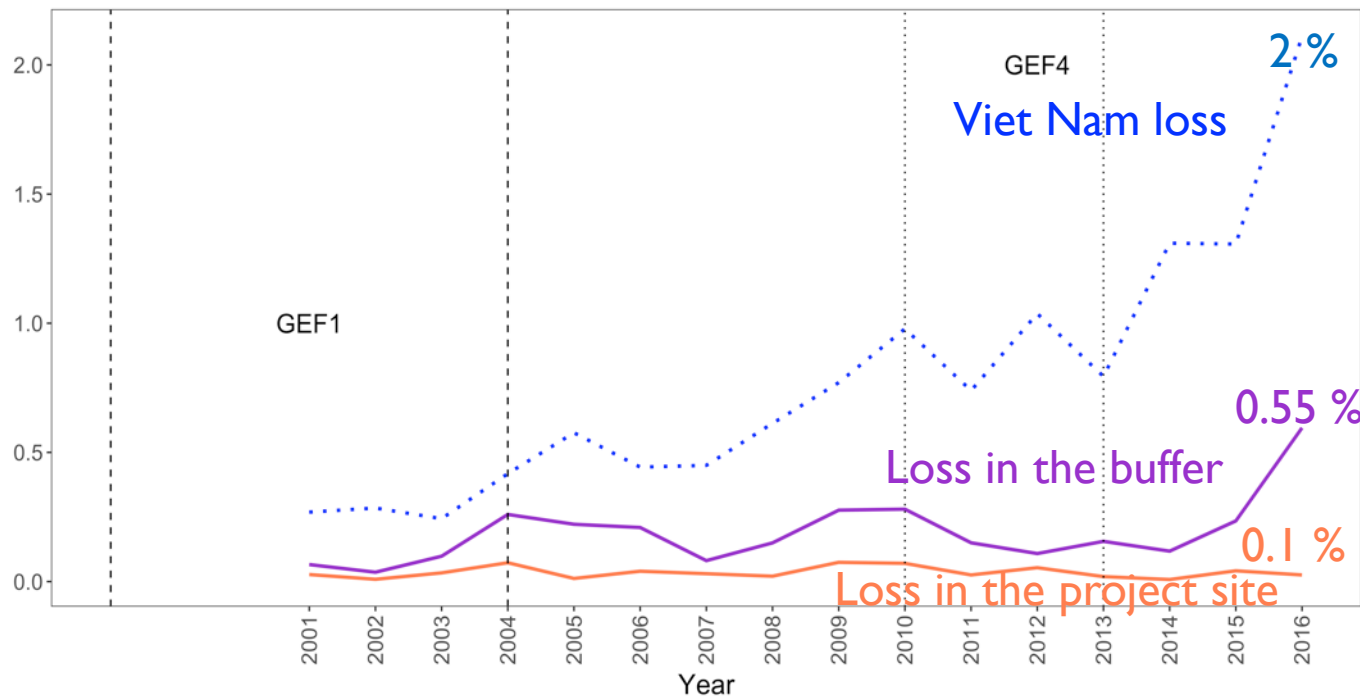
Ba Be: Sustainable Forest Management, Viet Nam

SUSTAINABLE OUTCOME

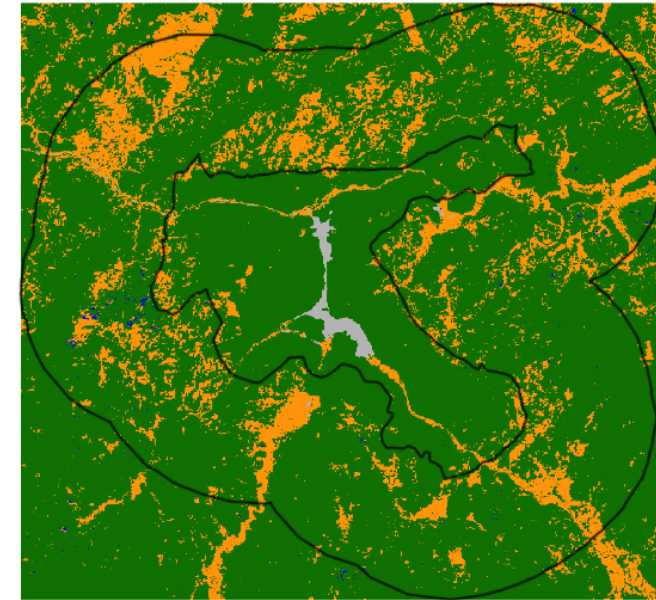
Forest loss did not increase despite unprecedented increase in the buffer and at country level

Loss rate (%/year)

Forest cover loss



2000



Cover
Forest
Non-forest
Forest gain
Forest loss
Water
No data

Region
— GEF1_209_Ba Be

Cardamom Mountains

Integrated Protected Area System, Cambodia

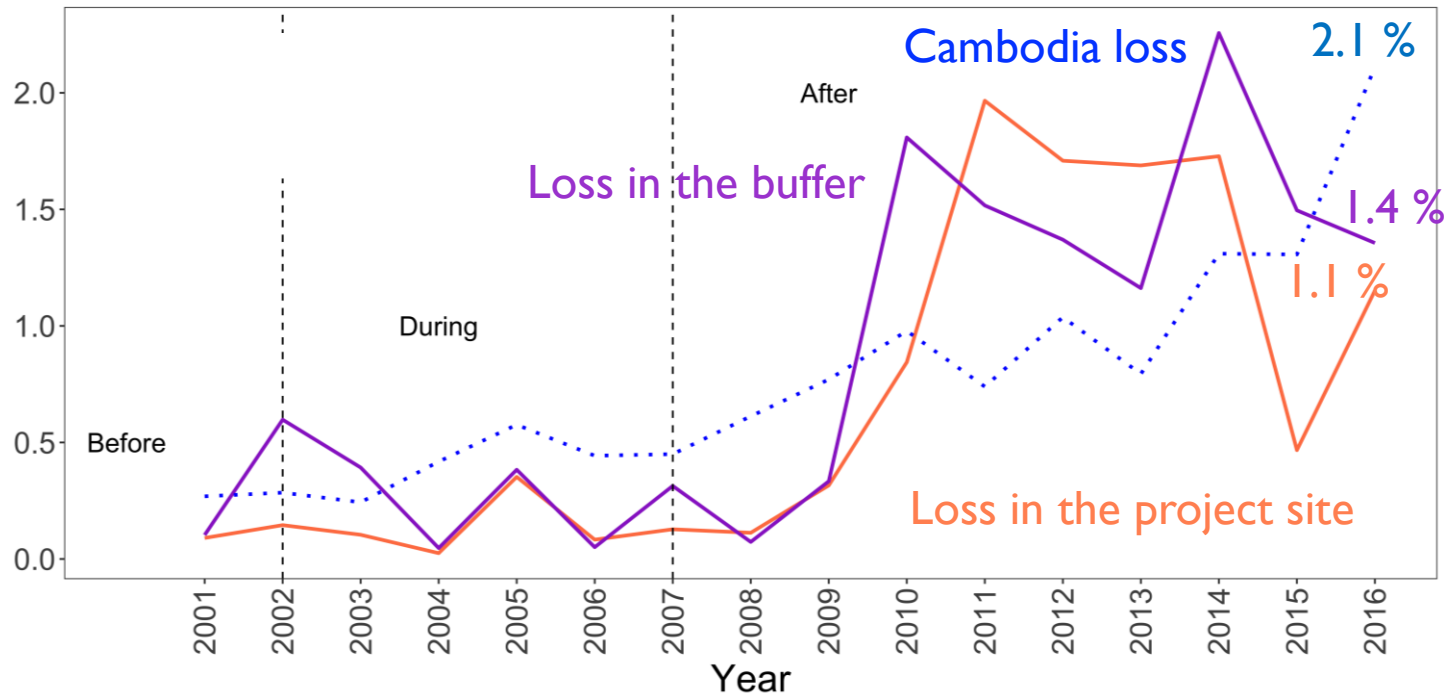
NO INDICATION OF SUSTAINABLE OUTCOME

Forest loss increased at a similar rate compared to the buffer and at country level

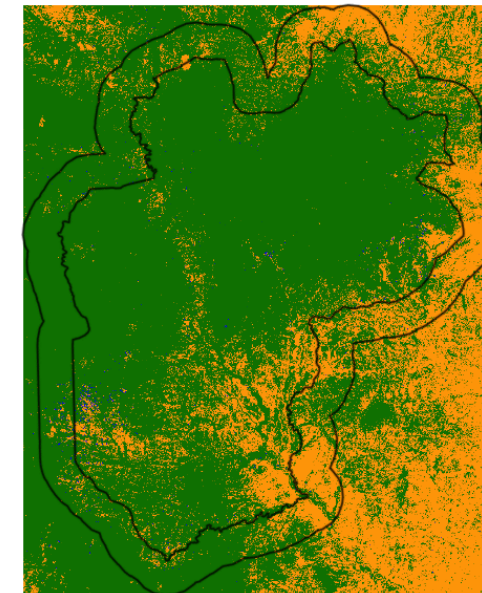
Loss rate (%/year)

Forest cover loss

Forest cover loss of Phnom Aural relative to its forest cover in 2000



2000



Cover

- Forest
- Non-forest
- Forest gain
- Forest loss
- Water
- No data

Region

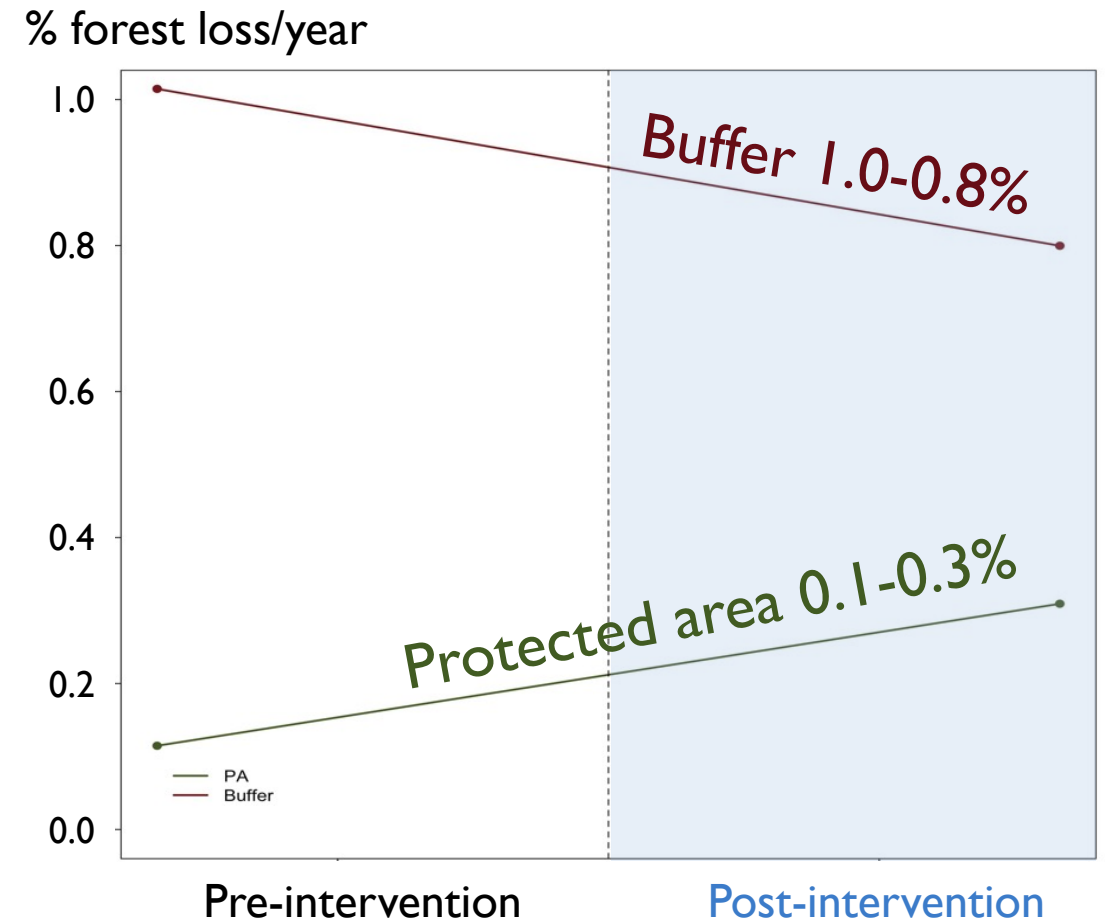
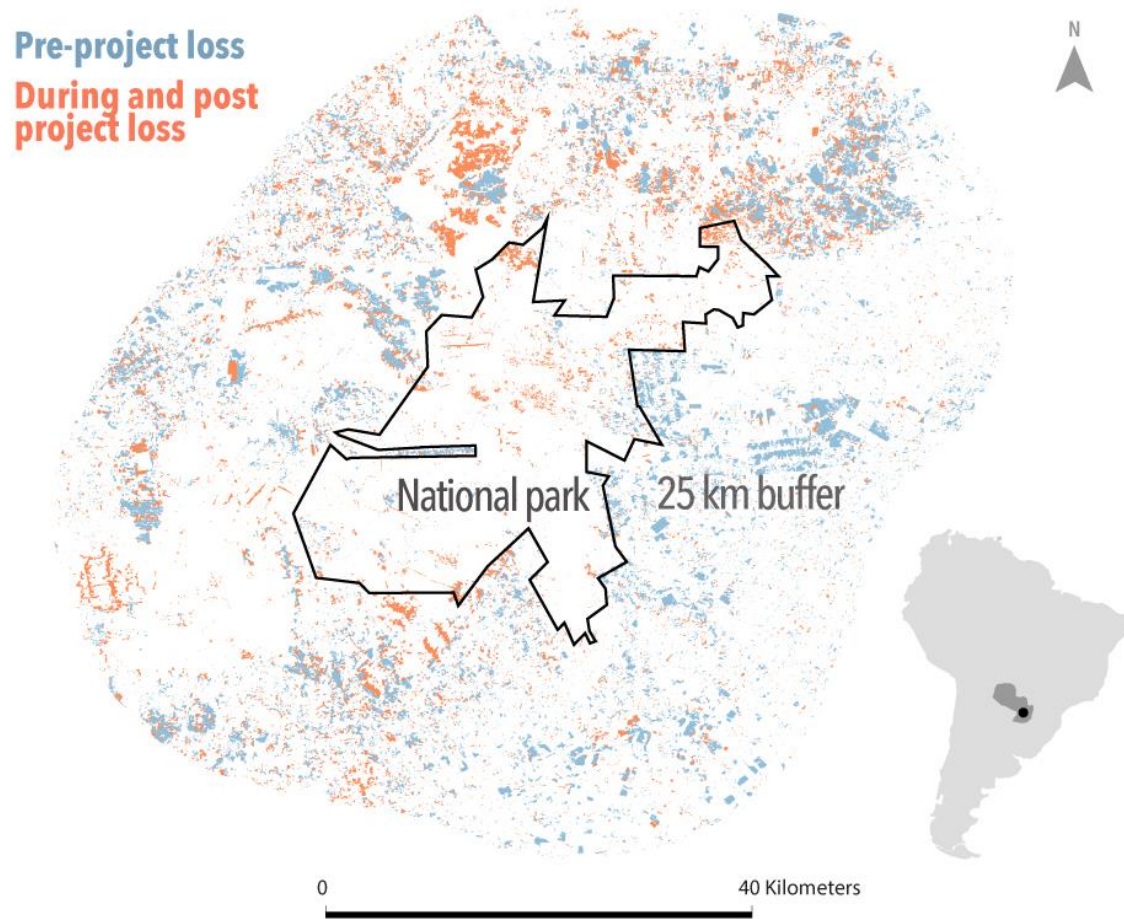
- GEF2_1086_Phnom Aural

San Rafael National Park

Conservation of Biodiversity in Atlantic Forests of Eastern Paraguay

NO INDICATION OF SUSTAINABLE OUTCOME

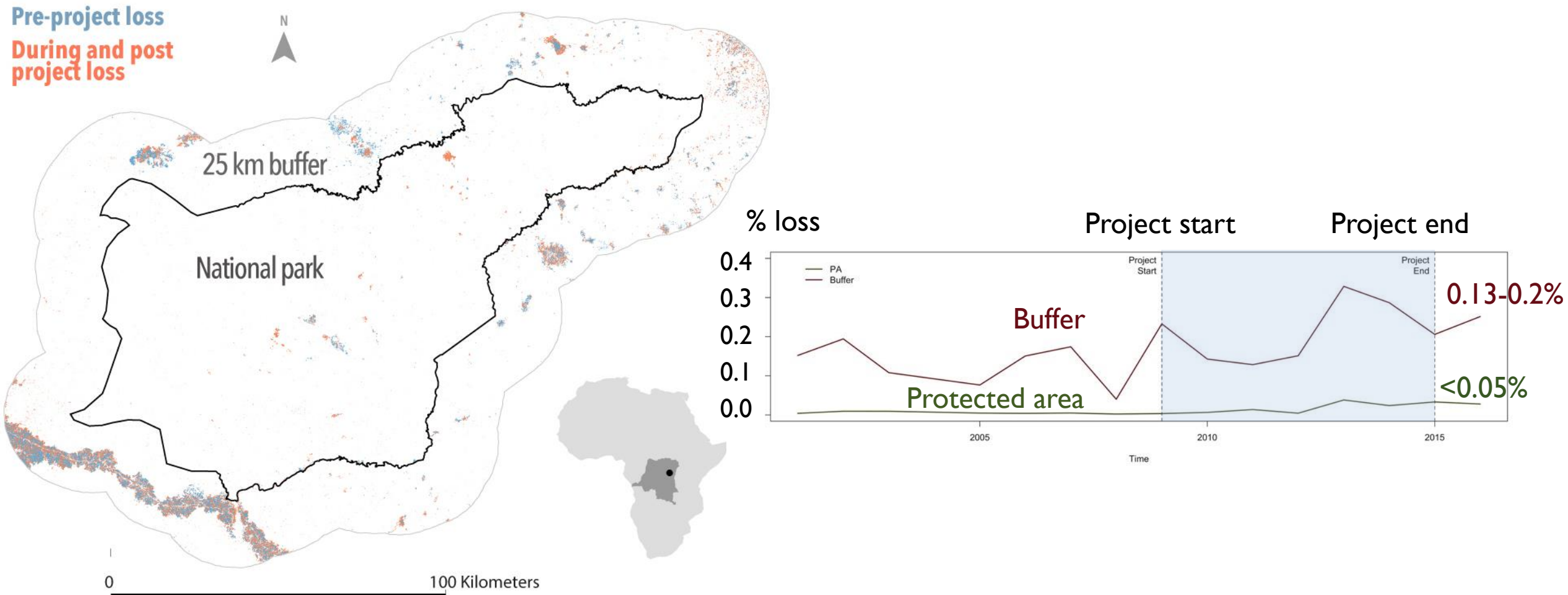
Forest loss increased (0.1% to 0.3%) compared to decrease in buffer (1.0 to 0.8 %)



Maiko National Park : CBSP Forest and Nature Conservation, DR Congo

SUSTAINABLE FOREST CONSERVATION

Forest loss stable ($<0.05\%$) compared to increase in the buffer (0.13 to 0.2 %)



SECTION TWO

ECOLOGICAL FORECASTING USING GEOSPATIAL ANALYSIS

Kenya

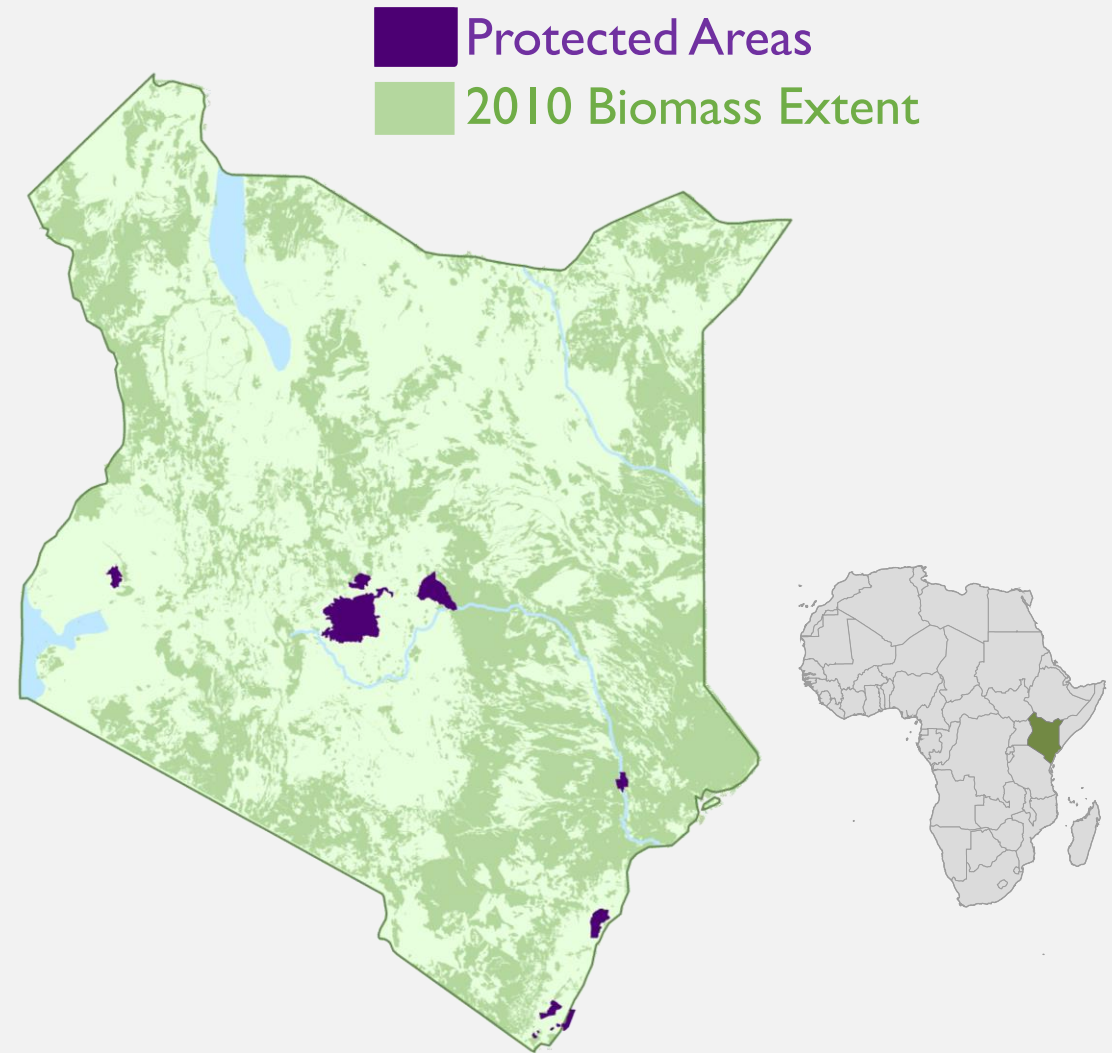
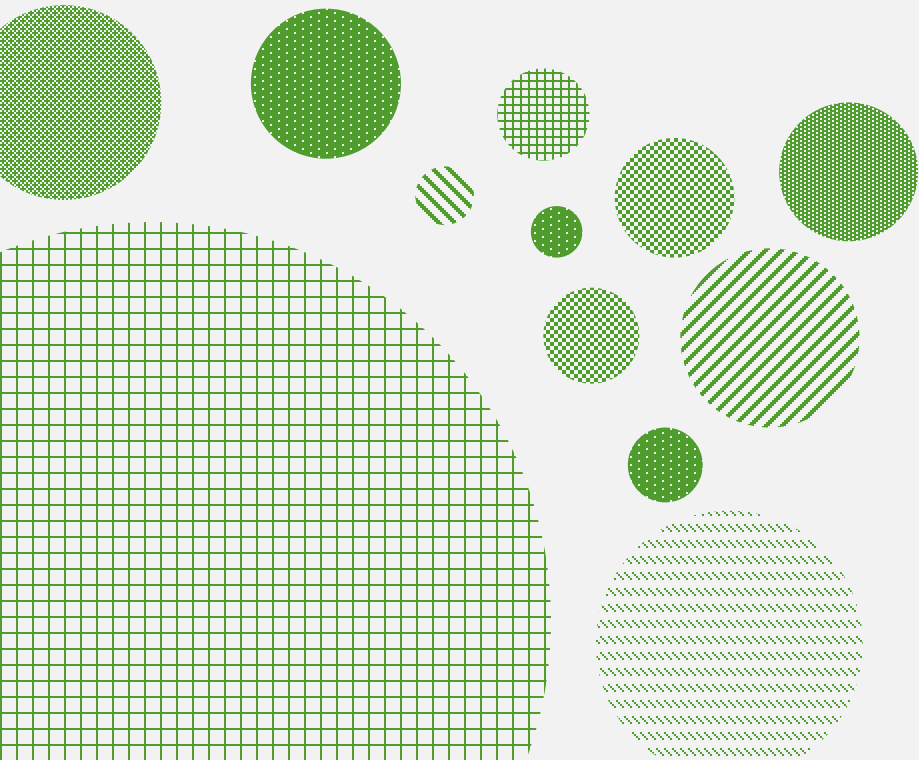


Kenya study

12 terrestrial protected areas (5035 km²)

Diversity of land cover types and sizes

Study periods: 1995-2016, 2020 and 2030



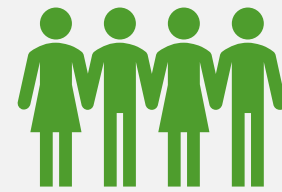
Kenya study: Results



Little to no net change
in above-ground carbon stocks

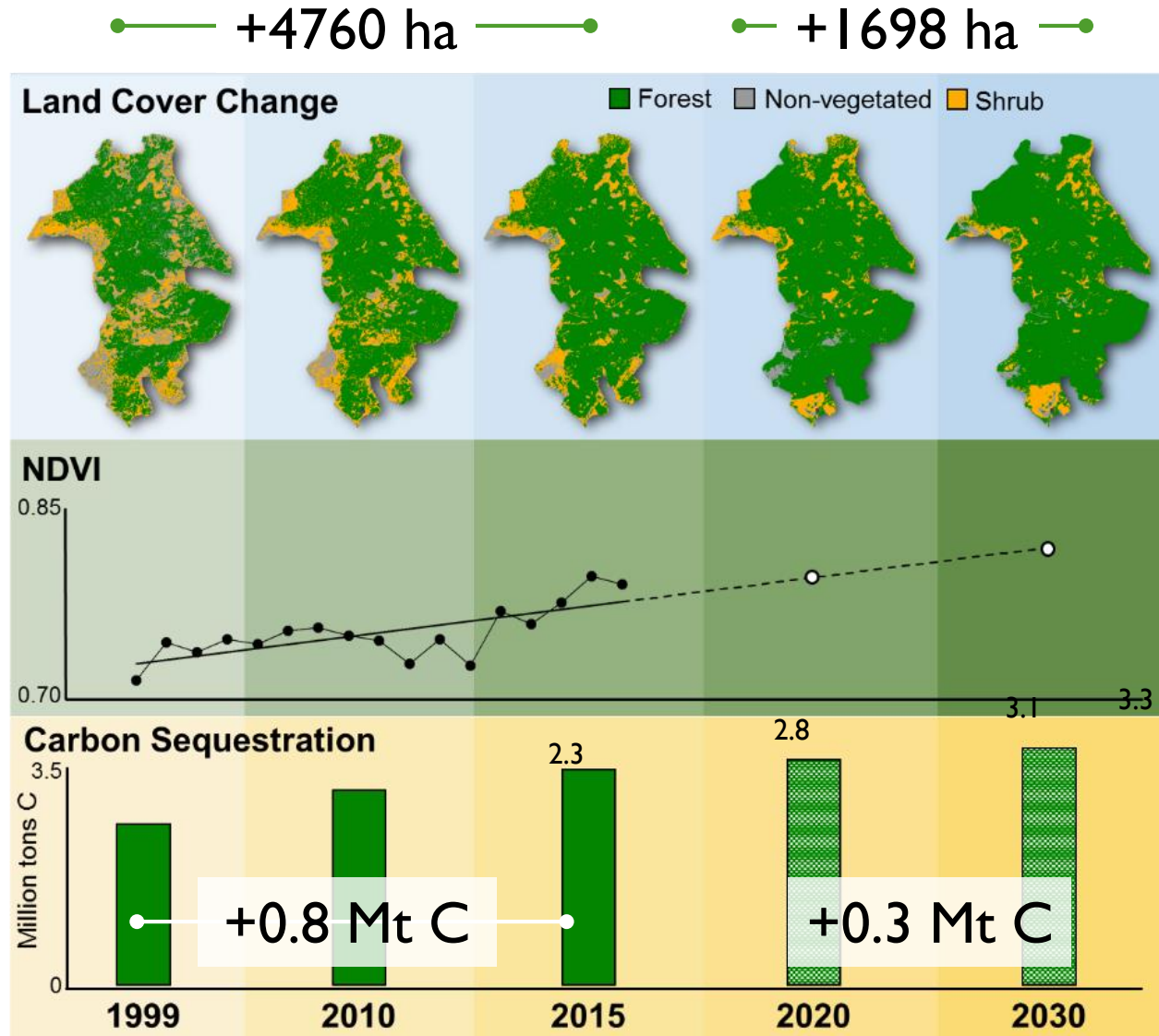


**Proximity to rivers and
irrigated agriculture**
contribute to land cover
change



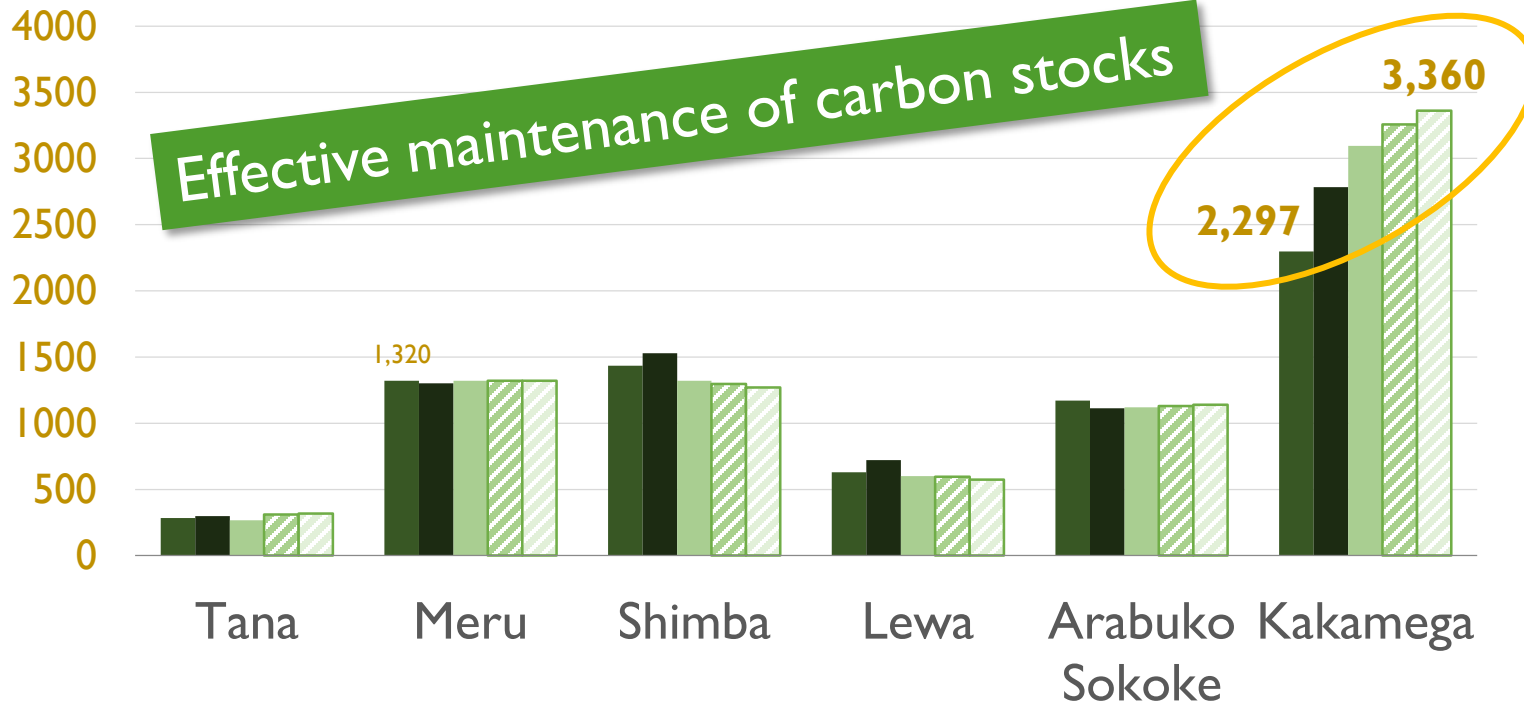
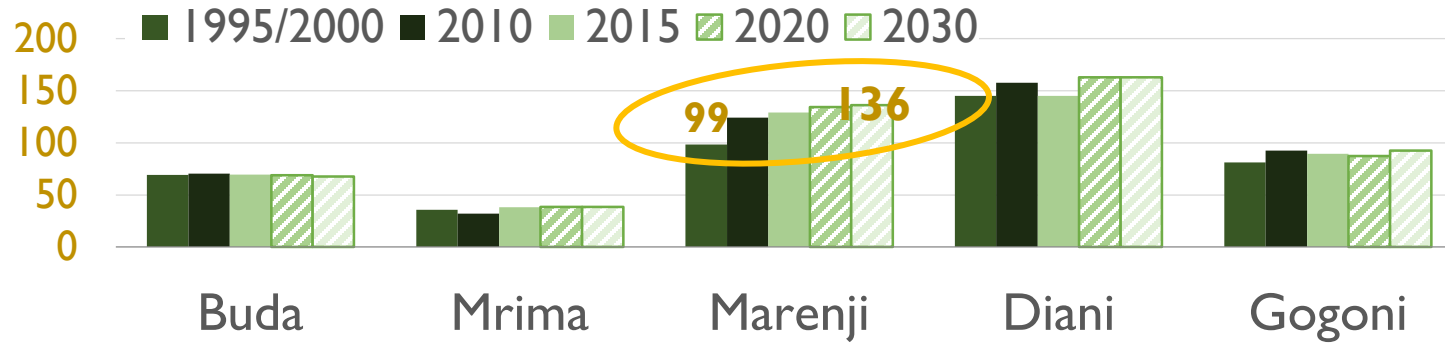
**Community engagement
and infrastructure**
contribute to benefits

Kenya study: Kakamega Forest Reserve

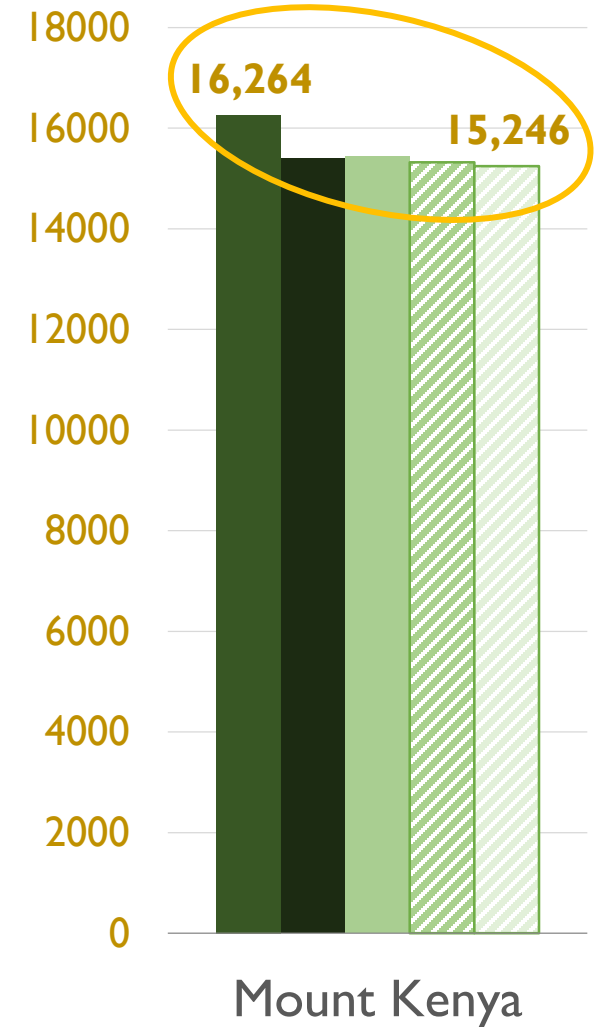


Aboveground carbon estimates, projections

Gigagrams of carbon



Gigagrams of carbon



Applications of this tool



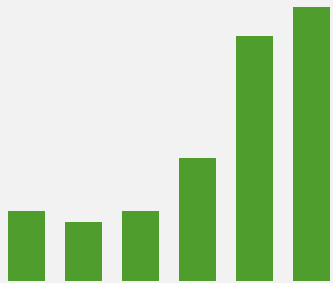
Establish baselines



Measure sustainability



Help set realistic
targets



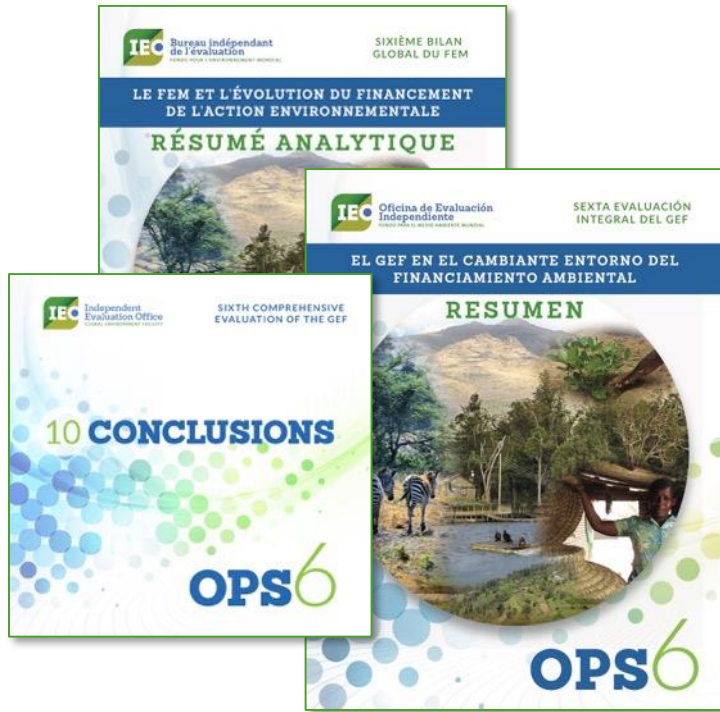
Measure impact



Inform locations for GEF interventions

Knowledge management

Sharing OPS6



Sharing



Training



Geospatial methods



Writing effective evaluations

Management action record

Evaluation of the
GEF CSO
Network

**SUBSTANTIAL
ADOPTION**

Joint GEF-UNDP
Small Grants
Program
Evaluation
(SAER June 2015)

**MEDIUM
ADOPTION**

Annual
Performance
Report 2015

**MEDIUM
ADOPTION**

Annual Country
Portfolio
Evaluation Report
2012

RETIRED

The background of the slide is a vibrant underwater scene. In the foreground, there are several tall, green, finger-like coral structures. A long, thin, striped fish is swimming diagonally across the middle of the frame. The water is a deep blue, and many small fish are visible in the background.

SECTION FOUR

WORK PROGRAM FOR FY19



Evaluations underway for FY19

November 2018

Evaluation of GEF's Approach to Mainstreaming Biodiversity

Evaluation of the Clean Technology Program

Evaluation of GEF Support to Scaling Up Impacts

Framework for Measuring GEF's Additionality

M&E Policy Update

Additionality in the GEF

June 2019

June: Strategic Country Cluster Evaluations: LDCs, African Biomes

Fall 2019

Evaluation GEF Medium-Sized Projects, SIDS

Estimated IEO budget for FY19

	\$ millions
Fixed costs	\$4.211
Variable costs	\$0.170
Evaluations	\$0.190
<hr/>	
Total	\$4.571



SEMI-ANNUAL EVALUATION REPORT

June 2018





RECOMMENDED COUNCIL DECISION

The Council, having reviewed the “Semi-Annual Evaluation Report of the GEF Independent Evaluation Office: June 2018”, approves the IEO Budget for FY2019.