



Independent
Evaluation Office
GLOBAL ENVIRONMENT FACILITY

THE GEF EVALUATION POLICY

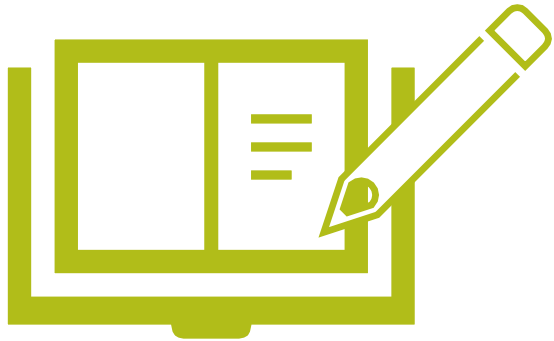
- ✦ Defines concepts, role, and use of evaluation within the GEF
- ✦ Defines the institutional framework and responsibilities
- ✦ Establishes minimum evaluation requirements

Proposed Changes



- ✦ Inclusion of GEF policies
- ✦ Measuring socio-economic co-benefits, geospatial coordinates when feasible
- ✦ Clearly explaining GEF's additionality
- ✦ Addressing program-level evaluation

Next Steps



Council: Follow up on the TOR of the IEO Director

IEO: Update guidelines to support policy implementation

- ✦ Terminal evaluation guidelines will be updated to include terminal evaluation of programs
- ✦ Guidance for assessment of GEF's additionality

RECOMMENDED COUNCIL DECISION

The Council, having reviewed “The GEF Evaluation Policy”:

(1) Approves the proposed GEF Evaluation Policy contained in Section 2 of this document, which supersedes the 2010 Policy on Monitoring and Evaluation as it relates to evaluation (Council document GEF/ME/C.39/6/Rev.1).”

(2) Authorizes the GEF Independent Evaluation Office to proceed with its dissemination and implementation.