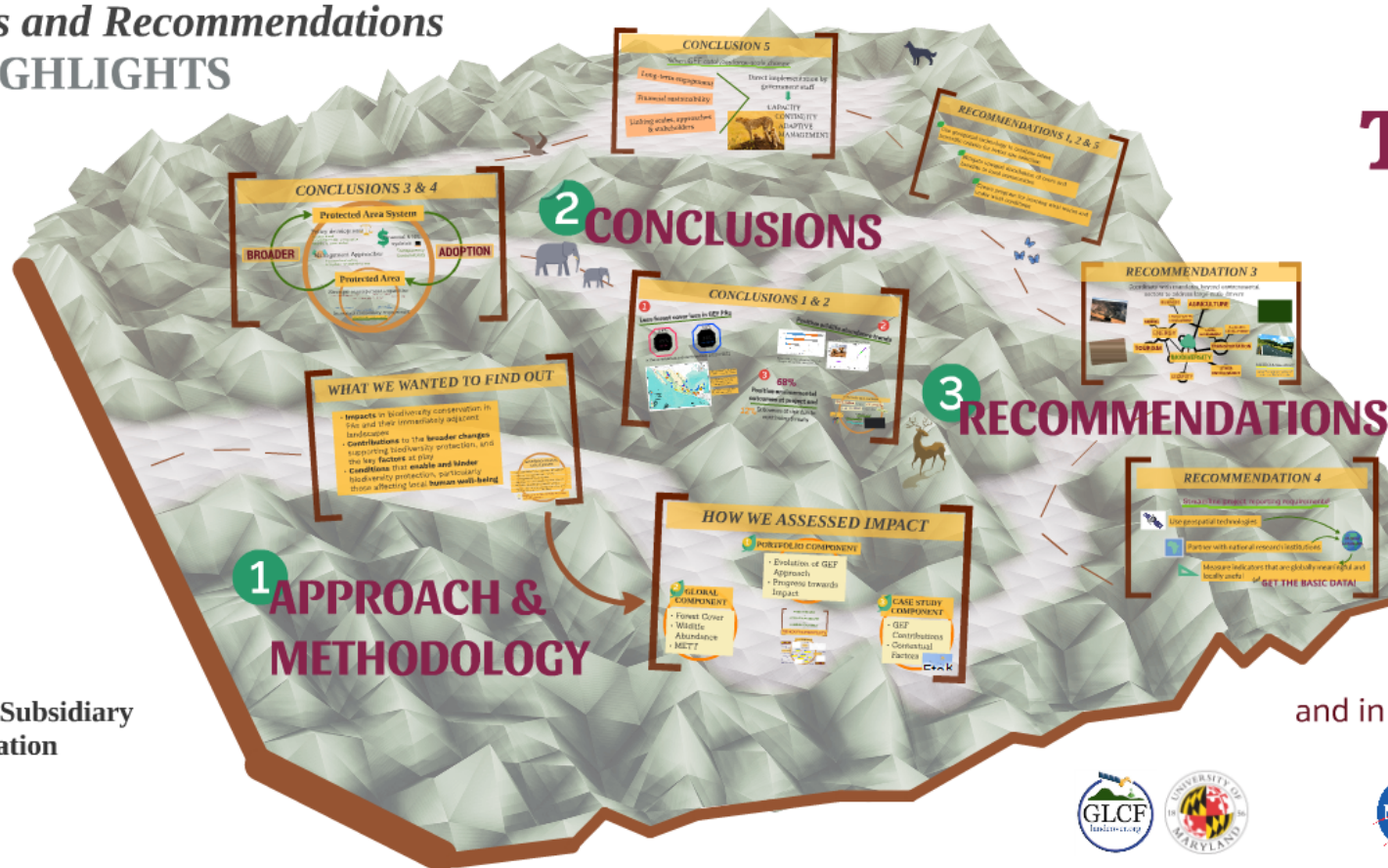


# Impact Evaluation of GEF Support to Protected Areas and Protected Area Systems

## Conclusions and Recommendations HIGHLIGHTS

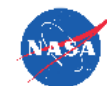


**THANK YOU!**

First meeting of the Subsidiary Body on Implementation

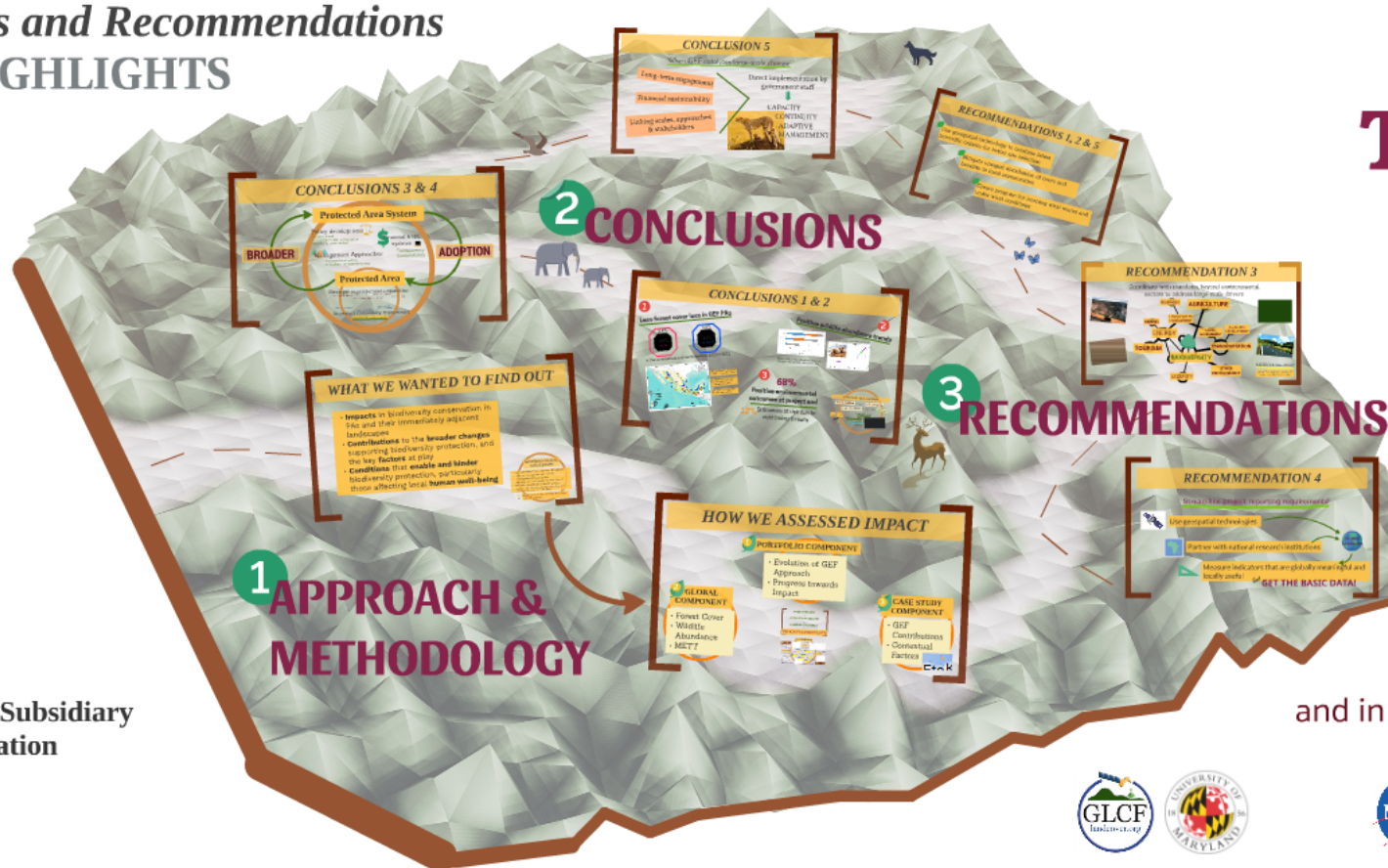
02 May 2016  
Montreal, Canada

and in collaboration with



# Impact Evaluation of GEF Support to Protected Areas and Protected Area Systems

## Conclusions and Recommendations HIGHLIGHTS



**THANK YOU!**

First meeting of the Subsidiary Body on Implementation

02 May 2016  
Montreal, Canada

and in collaboration with





# WHAT WE WANTED TO FIND OUT

- **Impacts** in biodiversity conservation in PAs and their immediately adjacent landscapes
- **Contributions** to the **broader changes** supporting biodiversity protection, and the key **factors** at play
- **Conditions** that **enable and hinder** biodiversity protection, particularly those affecting local **human well-being**

## METHODOLOGICAL CHALLENGES

- Substantial information gaps on GEF support
  - Uneven reporting in project documents and METTs
- Limited global time-series data
  - Not always matching with time periods or areas of GEF support
- Difficulties in estimating counterfactuals
  - Made more difficult by lack of certainty on "GEF-supported" and "non-GEF"
  - Spillover effects and no clear-cut successes/ failures



Mitigated by multidisciplinary and mixed methods approach

# *EXTENT OF GEF SUPPORT*

**US\$ 3.4 billion** in grants to **137 countries**

**US\$ 12.0 billion** in cofinancing for **618 projects**

**2,785,350 sq km**

GEF support evolving  
with latest science



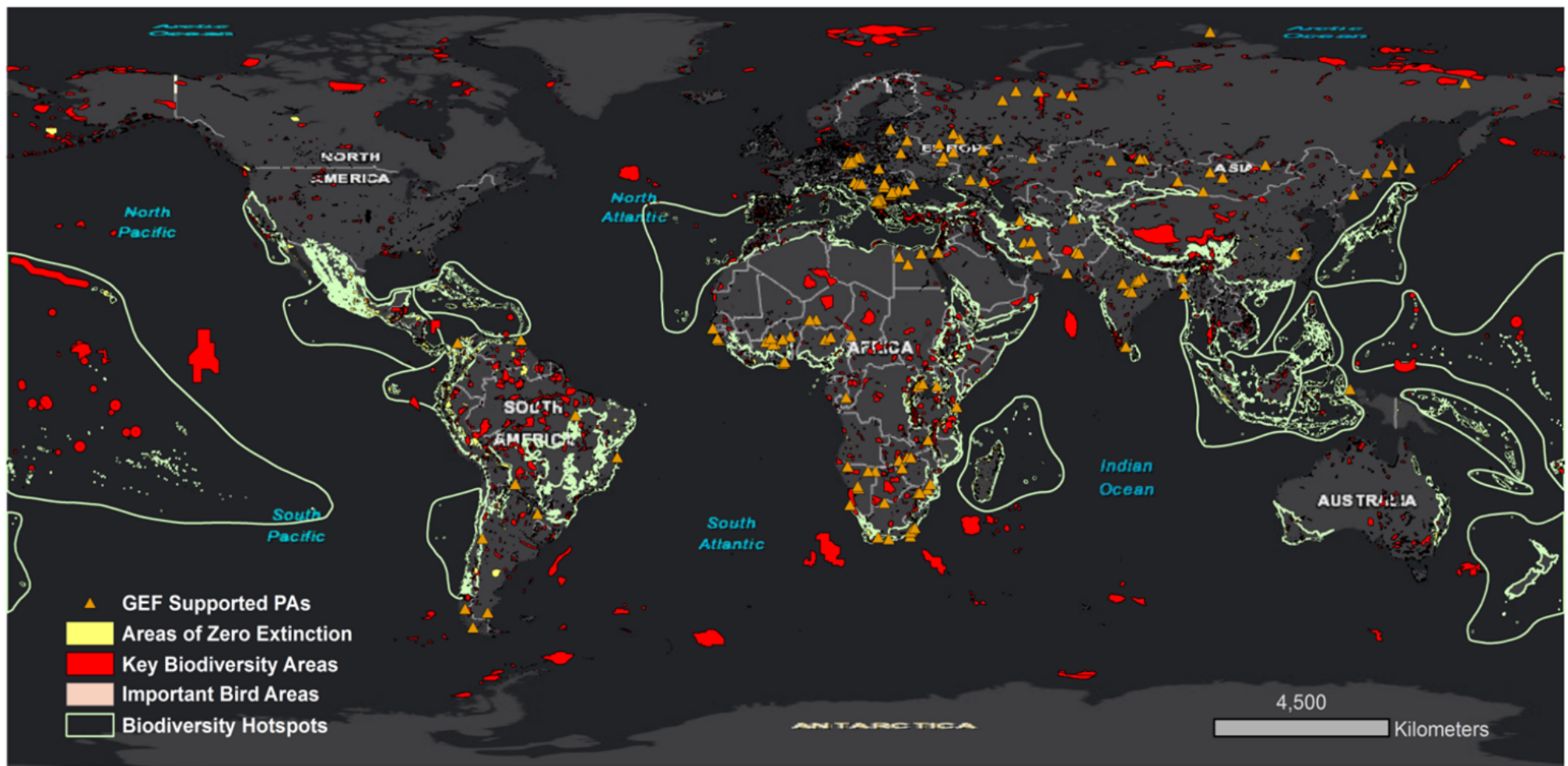
**1,292 non-marine PAs**

**58% Key Biodiversity Areas**

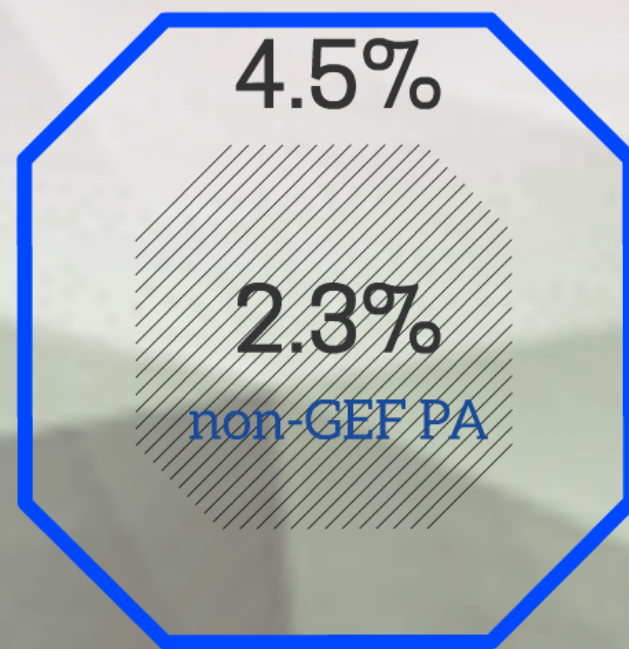
31% other international  
designation







# Less forest cover loss in GEF PAs

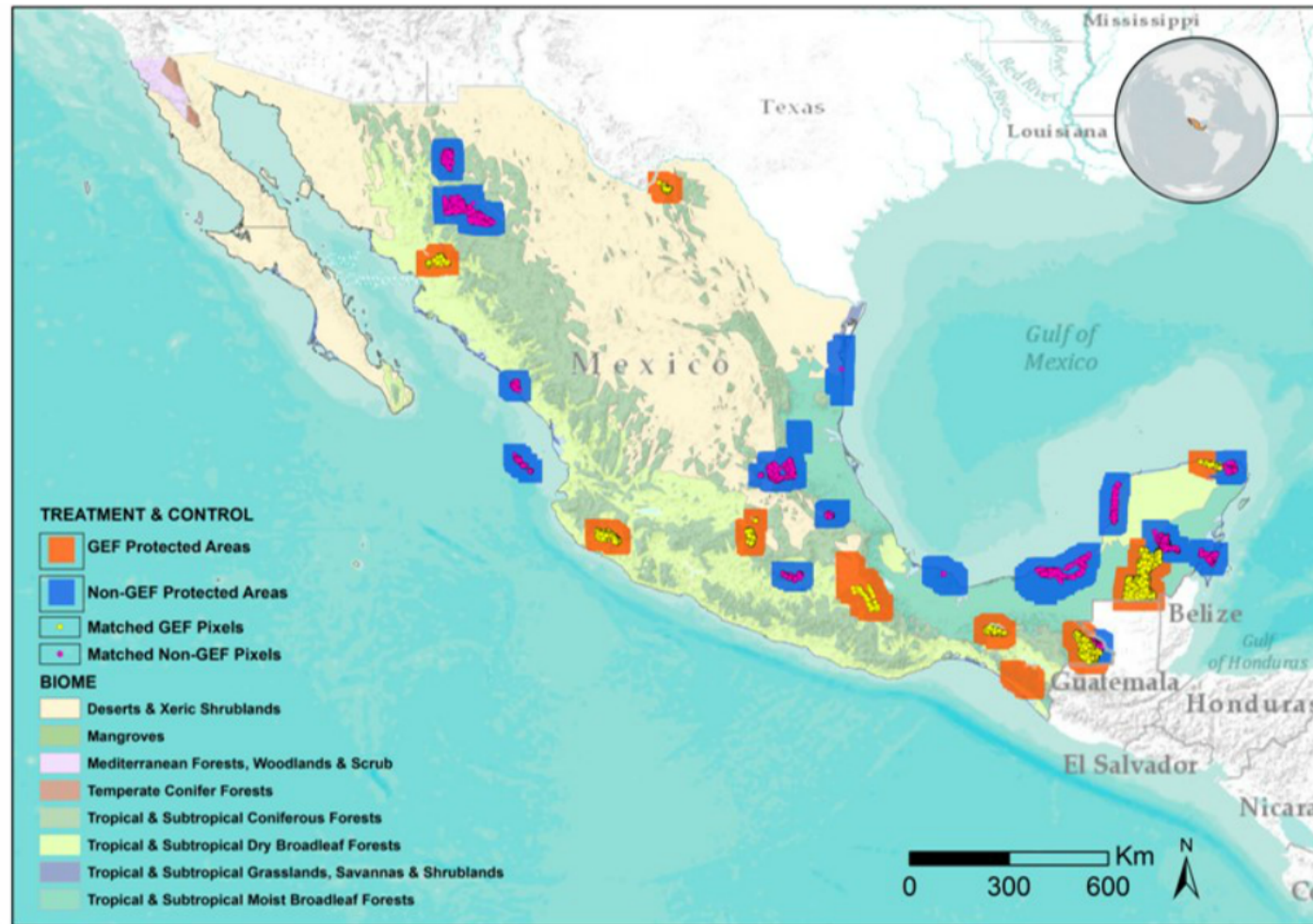


in the same biomes and countries from 2001 to 2012





# in the same biomes and countries from 2001 to 2012



**23%** less forest loss than non-GEF PAs across all Mexico PAs

up to **28%** avoided forest loss in tropical and subtropical coniferous forest biome

**20%** more forest in non-GEF PAs in mangrove biome



# CONCLUSIONS 3 & 4



# CONCLUSION 5

When GEF catalyzes large-scale change

Long-term engagement

Financial sustainability

Linking scales, approaches  
& stakeholders

Direct implementation by  
government staff



CAPACITY  
CONTINUITY  
ADAPTIVE  
MANAGEMENT





# *RECOMMENDATIONS 1, 2 & 5*



Use geospatial technology to combine latest scientific criteria for better site selection



Mitigate unequal distribution of costs and benefits to local communities



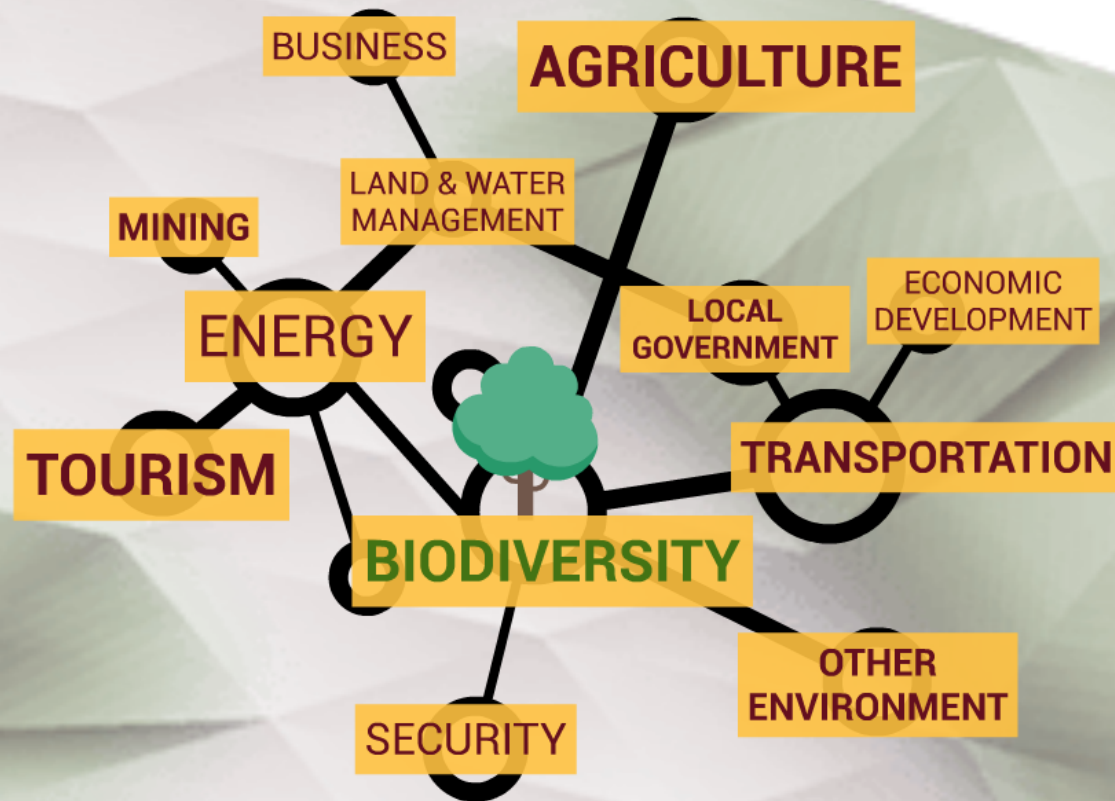
Create program for learning what works and under what conditions





# RECOMMENDATION 3

Coordinate with mandates beyond environmental sectors to address large-scale drivers



## MEXICO case study

largest funding and number of projects on PAs & PA system

## RECOMMENDATION 4

Streamline project reporting requirements!



Use geospatial technologies



Partner with national research institutions



Measure indicators that are globally meaningful and locally useful

*but*

**GET THE BASIC DATA!**





# Impact Evaluation of GEF Support to Protected Areas and Protected Area Systems

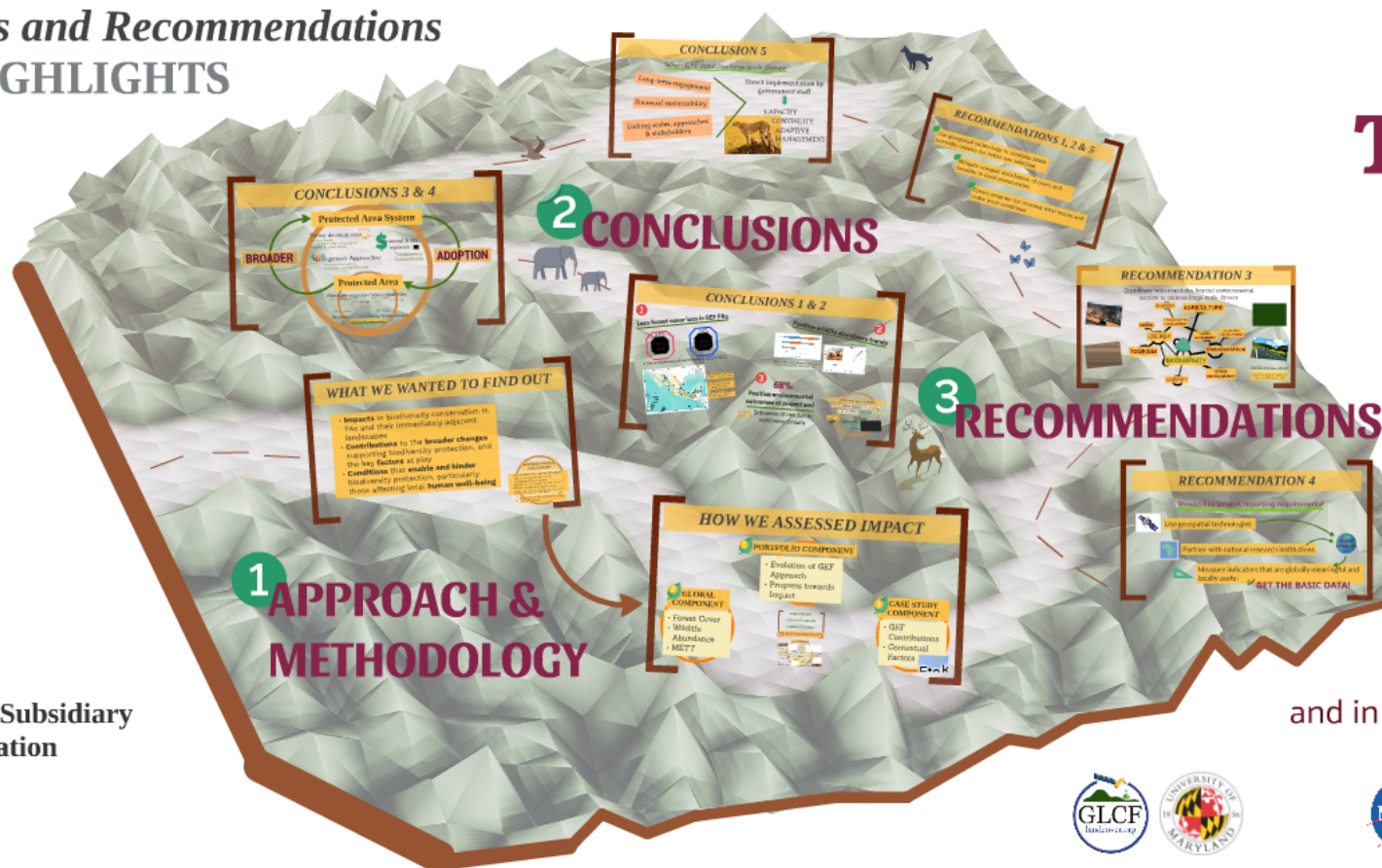
## Conclusions and Recommendations HIGHLIGHTS

gef IEO Independent Evaluation Office  
GLOBAL ENVIRONMENT FACILITY

in partnership with



# THANK YOU!



First meeting of the Subsidiary Body on Implementation

02 May 2016  
Montreal, Canada

and in collaboration with

