



Have you looked wide enough?

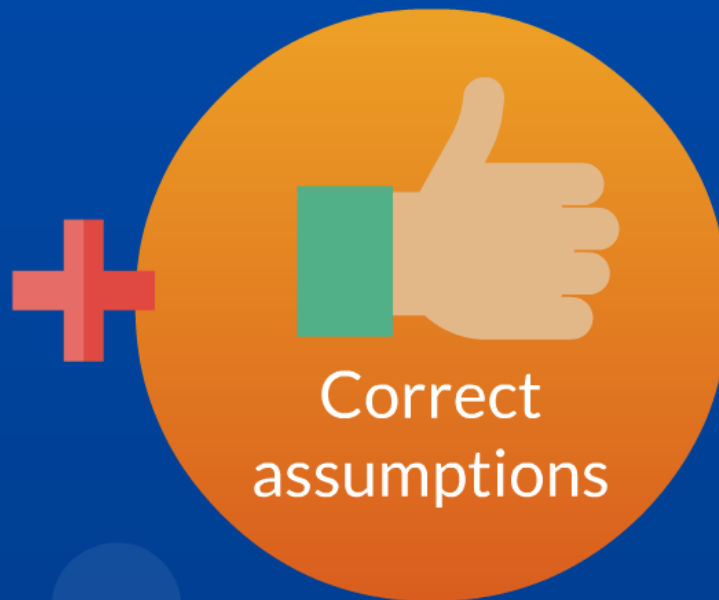
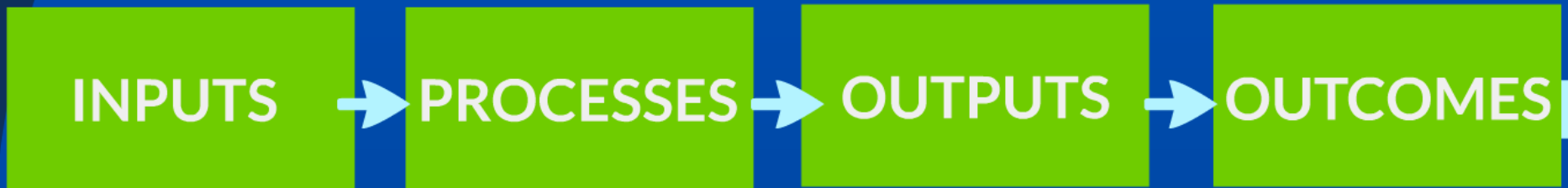
Using Expanded Theories of Change to
Evaluate Coupled Human and Natural Systems

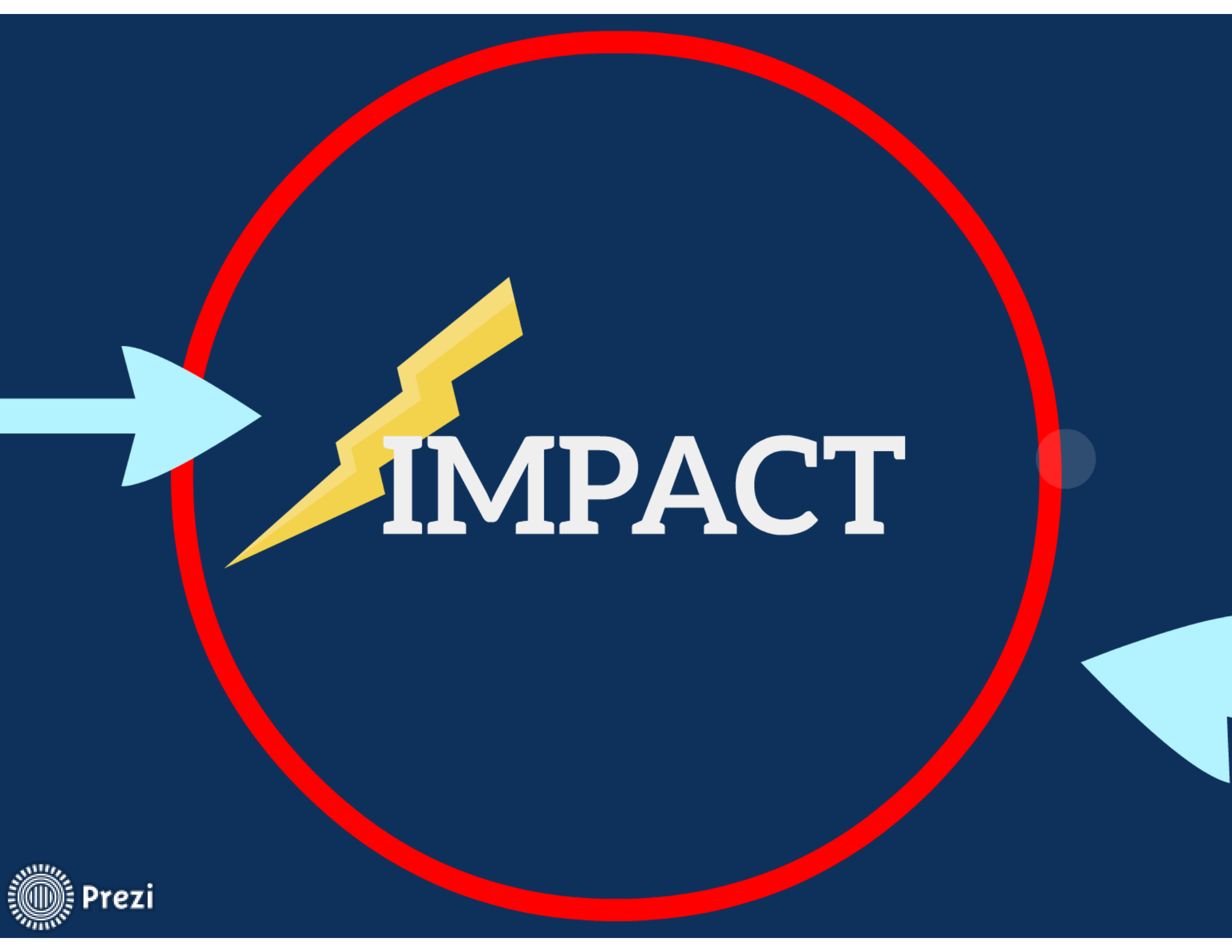
Jeneen R. Garcia

Evaluation Officer

✉ jgarcia2@thegef.org

What Traditional Evaluations Look At





IMPACT

The Real World



What Traditional Evaluations Look At

Inputs → Processes → Outputs → Outcomes



What are we not seeing?



Introduction to Sustainability-Ready Evaluation

Have you looked wide enough?

Using Expanded Theories of Change to Evaluate Coupled Human and Natural Systems

Jeneen R. Garcia, Evaluator Officer
jeeneen@hapt.org



Use Prezi here: <https://prezi.com/0Dnrcgvs00laand0l-0c-to-be-sustainability-ready/>

What Traditional Evaluations Look At

INPUTS → PROCESSES → OUTPUTS → OUTCOMES

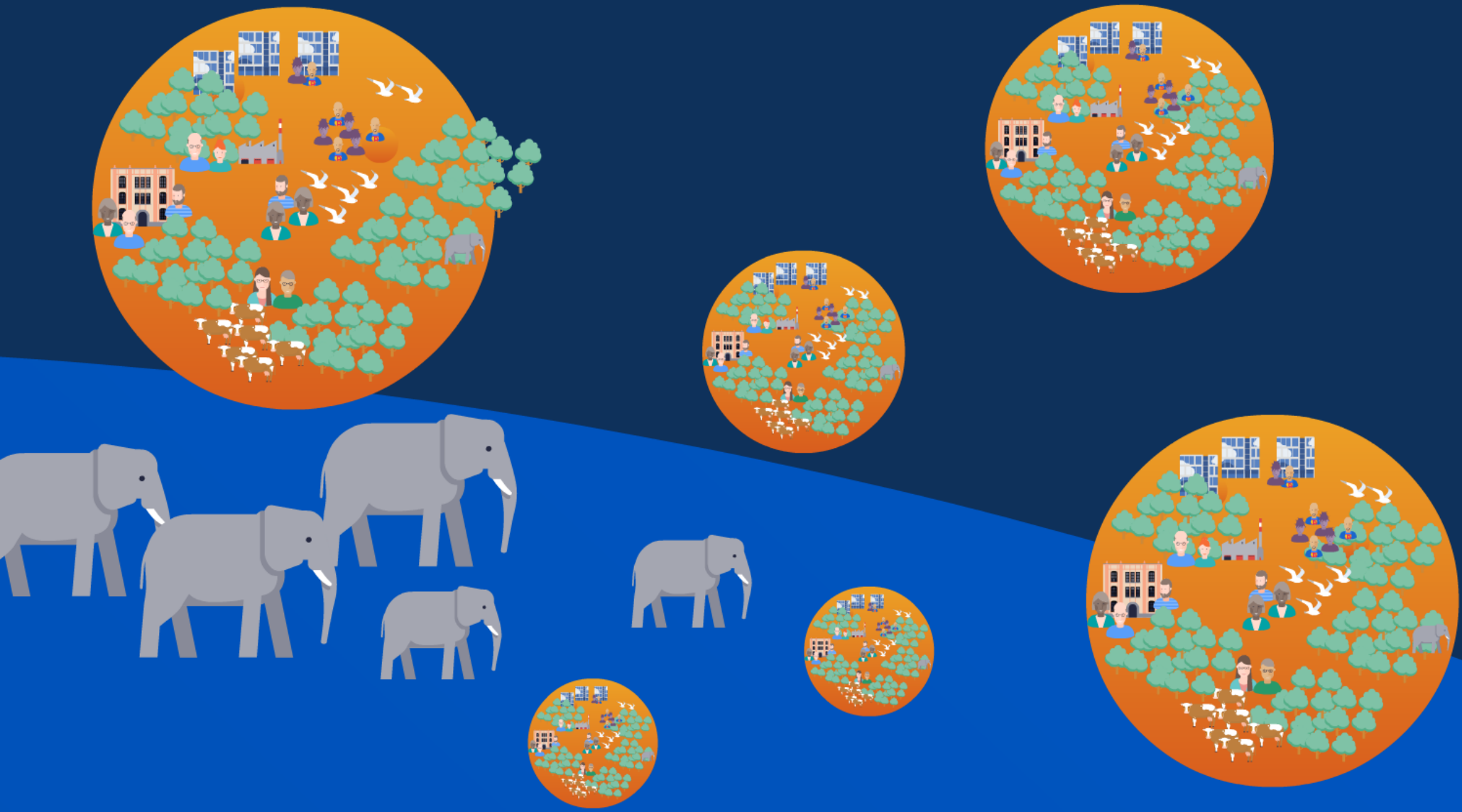


IMPACT



What are we not seeing?



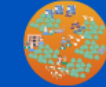


Multiple spaces and users for same resource

WORKING WITH COUPLED HUMAN AND NATURAL SYSTEMS HAS ITS SPECIAL SET OF CHALLENGES....



Multiple uses and users within same space



Multiple spaces and users for same resource

Mismatched scales of human and natural systems in time & space

Data and information gaps

7
countries

20 years

34 projects

150
small grants

4 agencies

What is the impact of GEF support in the South China Sea?

115 million USD

UNEP-implemented South China Sea Project



Boundaries

South China Sea (oceanographic)

Components

National governments

Local governments

Scientists

Interactions

Steering committee meetings
among national ministers

Roundtable meetings among
local government executives

Scientific conferences

Emergent properties

Countries agree to fund and collaboratively
implement SCS Strategic Action Programme

UNEP (UNEP INTENDED OUTCOME)



Sovereign Countries

DANIDA

Boundaries

East Asia (geopolitical)

Components

JICA

UNEP-initiated COBSEA

UNDP-implemented PEMSEA Project



- Boundaries
 - East Asian Seas (geopolitical)
- Components
 - National governments
 - Local governments
 - Scientists
- Interactions
 - Network and conferences for local government executives
 - Multidisciplinary experts group

Emergent properties

Countries agree to fund PEMSEA and implement Sustainable Development Strategy for Seas of East Asia (INTENDED OUTCOME)

Interactions

Long-standing maritime disputes continue
National governments traditionally adopt but do not fund regional environmental plans

Emergent properties

Countries reluctant to enter into legally binding regional environmental agreements due to sovereignty concerns

Other donors

SIDA

USAID

UNEP-implemented South China Sea Project



- Boundaries
 - South China Sea (geopolitical)
- Components
 - National governments
 - Local governments
 - Scientists
- Interactions
 - Working group to resolve the jurisdictional disputes
 - Plum Blossom dialogues among local government executives
 - Scientists conference

Emergent properties

Countries agree to fund and co-lead/leadly implement SCS Strategic Action Programme (INTENDED OUTCOME)

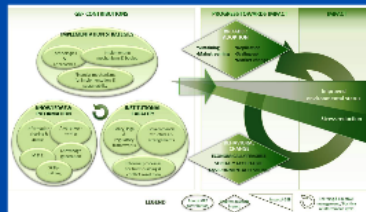
SCS Strategic Action Programme signed by all beneficiary countries despite initial resistance from two countries

Map out your own TOC

Map out the intervention



Linear Theory of Change



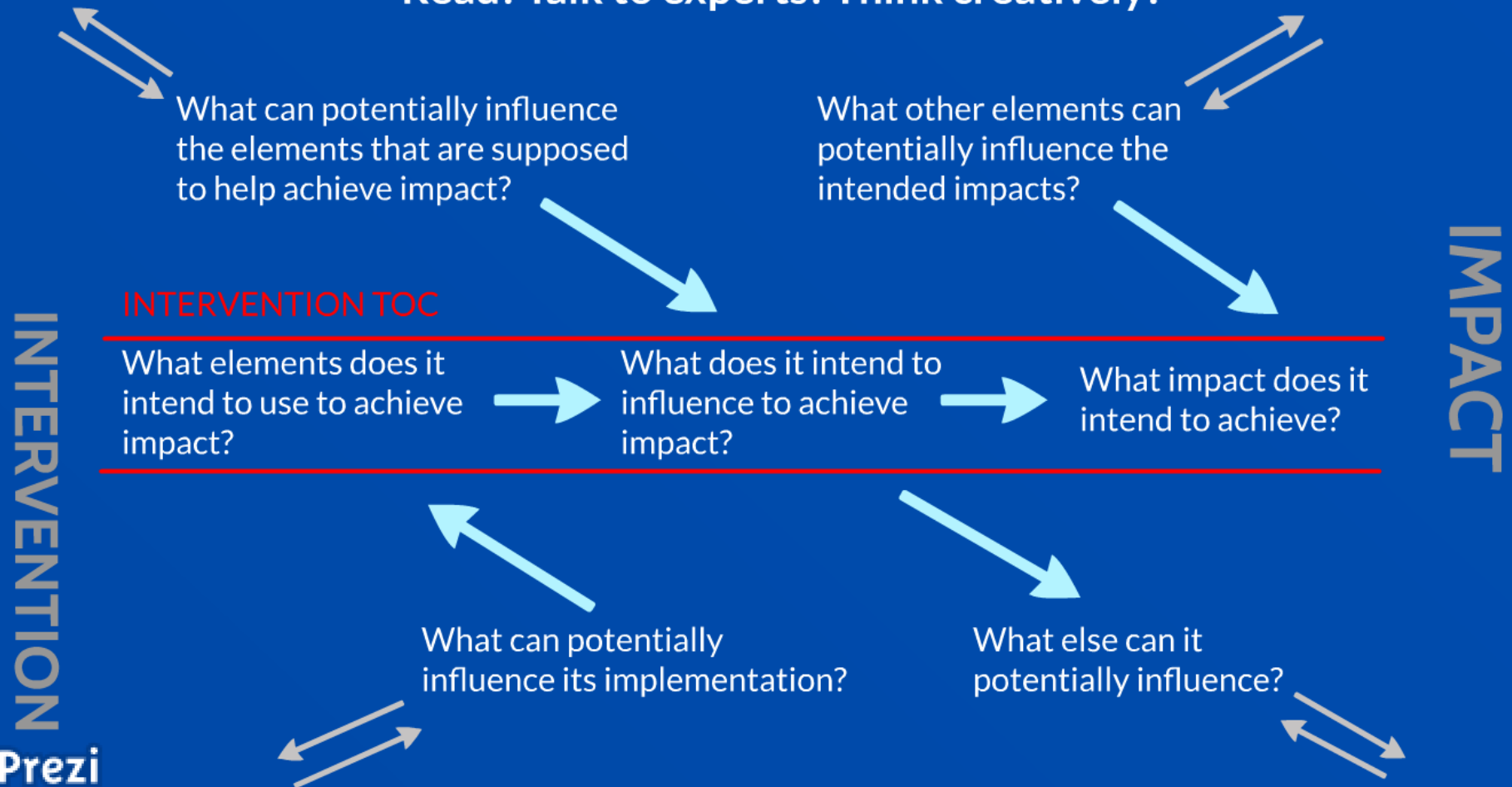
Non-Linear Theory of Change

the larger system that the intervention is PART OF

know what to include?

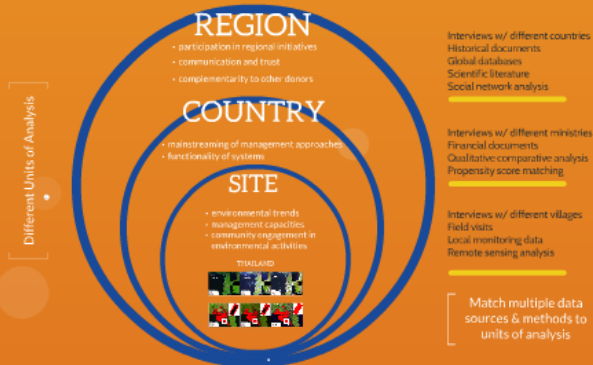
LARGER SYSTEM

Read! Talk to experts! Think creatively!



2 Identify the Units of Analysis

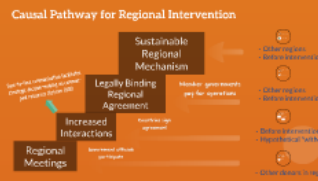
- Identify the changes to assess
- Identify the interventions to assess
- Identify the units of space and time along the TOC where change is expected to happen



Impact Evaluation of GEF Support to the South China Sea (SCS) and Adjacent Areas
<https://www.gef.org/evaluation/infocenter/evaluation-reports/2019-01-01-2019-12-31>

Impact Evaluation of the GEF Support to Protected Areas (PAs) and PA Systems
<https://www.gef.org/evaluation/infocenter/evaluation-reports/2019-01-01-2019-12-31>

Mixed Methods & Approaches for multiple "WHAT WOULD HAVE HAPPENED"s



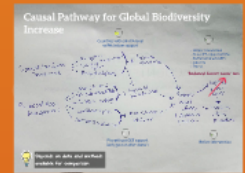
The "Net Effect"

MCA typically do not spend for regional mechanisms

There has been no binding regional agreement for marine, SVDK

Some important national actors are disconnected from the regional discussion without GEF support

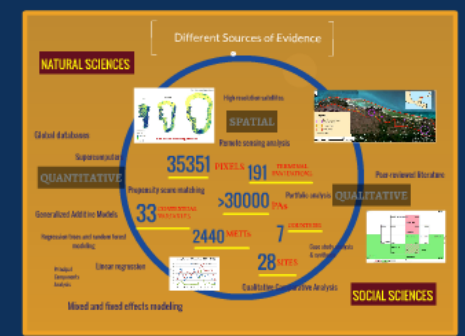
GEF has given the largest amount for regional interventions



An iterative process as you get more information



3 Identify the Methods & Data Sources



Use mixed methods AND mixed approaches using data and methods that are available and feasible

Identify

the changes to assess

Identify

the interventions to
assess

Identify

the units of space and time along the TOC
where change is expected to happen

REGION

- participation in regional initiatives
- communication and trust
- complementarity to other donors

COUNTRY

- mainstreaming of management approaches
- functionality of systems

SITE

- environmental trends
- management capacities
- community engagement in environmental activities

THAILAND

Different Units of Analysis

Impact Evaluation of GEF Support to the South China Sea (SCS) and Adjacent Areas

<http://www.gefio.org/evaluations/gef-south-china-sea-scs-and-adjacent-areas>

Impact Evaluation of the GEF Support to Protected Areas (PAs) and PA Systems

www.gefio.org/evaluations/impact-evaluation-gef-support-protected-areas-and-protected-area-systems-pas-2016



Prezi

REGION

- participation in regional initiatives
- communication and trust
- complementarity to other donors

COUNTRY

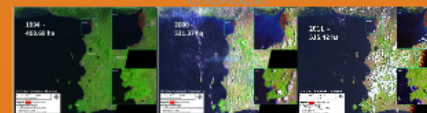
- mainstreaming of management approaches
- functionality of systems

SITE

- environmental trends
- management capacities
- community engagement in environmental activities

THAILAND

CHONBURI



TRAT



Different Units of Analysis

2

REGION

- participation in regional initiatives
- communication and trust
- complementarity to other donors

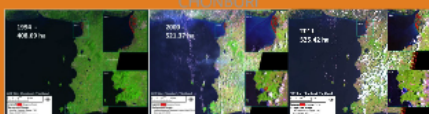
COUNTRY

- mainstreaming of management approaches
- functionality of systems

SITE

- environmental trends
- management capacities
- community engagement in environmental activities

THAILAND



Interviews w/ different countries
Historical documents
Global databases
Scientific literature
Social network analysis

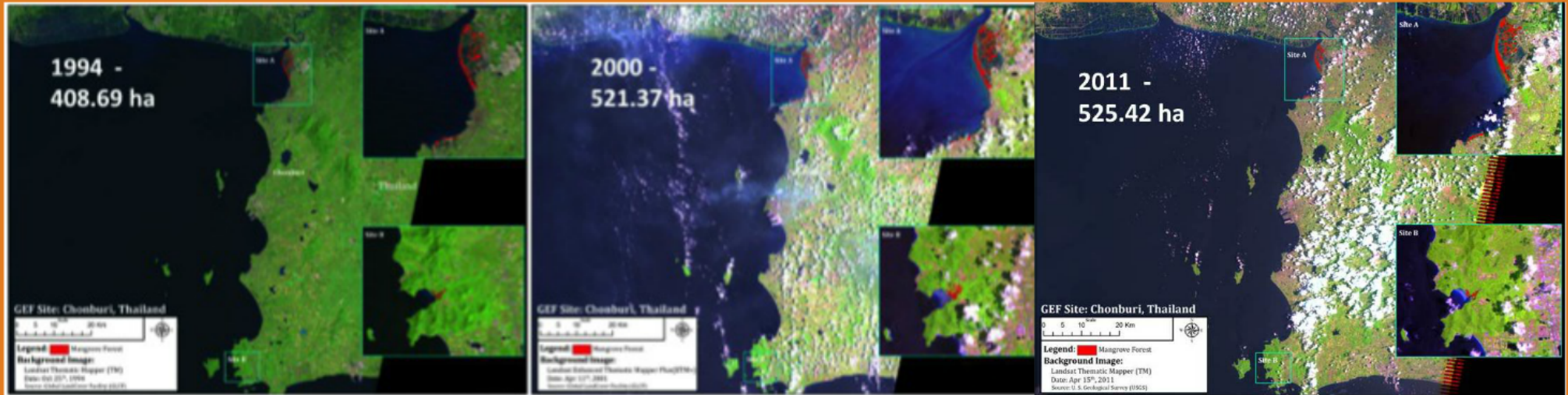
Interviews w/ different ministries
Financial documents
Qualitative comparative analysis
Propensity score matching

Interviews w/ different villages
Field visits
Local monitoring data
Remote sensing analysis

Match multiple data sources & methods to units of analysis

THAILAND

CHONBURI



TRAT

